



October 2024: Medicaid and CHIP Eligibility Operations and Enrollment Snapshot



January 15, 2025

Eligibility Operations and Enrollment Snapshot

- To promote transparency and provide insights into states' Medicaid and Children's Health Insurance Program (CHIP) eligibility operations and enrollment, this Snapshot captures state reporting of Performance Indicator Data, Eligibility Processing Data,¹ and Transformed Medicaid Statistical Information System (T-MSIS) data focusing on:
 - Medicaid and CHIP enrollment;
 - Total applications submitted to Medicaid, CHIP, Human Services agencies, and State-based Marketplaces;
 - Modified adjusted gross income (MAGI) application processing times;
 - Renewal outcomes; and
 - Call center metrics.
- CMS releases this Snapshot on a monthly-basis, providing current month and retrospective data to convey a national and state-specific picture of Medicaid and CHIP eligibility and enrollment operations, as well as Marketplace and Basic Health Program (BHP) enrollment. CMS releases additional data on a quarterly-basis, including data on separate CHIP program enrollment and updated renewal outcomes. The Snapshot with this additional data will be released on the last month of the quarter.
- Enrollment trends in this Snapshot are compared with February 2020 data to reflect the impacts of the Medicaid continuous enrollment condition. The continuous enrollment condition authorized by the Families First Coronavirus Response Act ended on March 31, 2023, with states resuming routine eligibility renewals, including terminations of coverage for individuals who are no longer eligible beginning on April 1, 2023.

¹ More information on the Performance Indicator Data Set can be found at [Medicaid.gov/performance-indicator-data](https://www.Medicaid.gov/performance-indicator-data). More information on the Eligibility Processing Data Report can be found at: [Medicaid.gov/eligibility-processing-data](https://www.Medicaid.gov/eligibility-processing-data).

What You Should Know When Using the Data: Performance Indicator Data Set

The **Medicaid and CHIP Eligibility and Enrollment Performance Indicator Data Set (Performance Indicator Data)** includes preliminary monthly aggregate data on states' eligibility and enrollment processes.

- States submit these data to CMS monthly.
- Definitions of elements in the Performance Indicator Data vary from other data sets, including T-MSIS and Medicaid and CHIP Eligibility Processing Data Report, and comparisons should not be made across data sets.
- **Medicaid and CHIP enrollment counts** include individuals receiving comprehensive Medicaid and CHIP benefits and represent a point-in-time count on the last day of the calendar month. CHIP enrollment includes all individuals with CHIP-funded coverage, including children enrolled in Medicaid-expansion CHIP, children enrolled in a separate CHIP, and pregnant adults enrolled in a separate CHIP.
- **MAGI application processing time data** represent the length of time it takes state Medicaid and CHIP agencies to conduct all final MAGI determinations (including Medicaid MAGI and CHIP) for individuals at application, regardless of date of application.
 - Application processing time data are influenced by state policies, practices including verification processes, and other factors including application volume, staffing, and level of automation in a state's eligibility system.
 - States may prioritize processing older applications. As these are completed, the data would reflect longer processing times, with the volume and age of pending applications decreasing.
 - Processing time data exclude renewals and redeterminations, and the data do not reflect the state's volume of pending applications.
- CMS released **state call center data** for the first time in July 2023. There is wide variation in how states operate their call centers, making it difficult to compare these data.
- Data specifications are available at: <https://www.medicaid.gov/medicaid/downloads/performance-indicators-datadictionary.pdf>.

What You Should Know When Using the Data: Eligibility Processing Data Report

The **Medicaid and CHIP Eligibility Processing Data Report (Eligibility Processing Data)** includes monthly aggregate data on states' renewal processes and outcomes.

- **Medicaid and CHIP renewal outcomes are reported by cohort.** States report outcomes for all individuals in the month in which renewals for the cohort are due, even if some renewals were completed in a prior month. These data represent the outcome of renewals due in the reporting month (generally effective the first of the following month).
- State-reported data may reflect **routine renewal data, or a combination of unwinding-related renewal data and routine renewal data.**
- Multiple factors, including state-adopted mitigations and other strategies, may influence renewal outcomes and reporting in a state.¹ For example:
 - **States with an *ex parte* mitigation strategy** that use data sources to complete a renewal after a form is sent may report those renewals as completed based on the return of a renewal form and underreport the number of individuals renewed on an *ex parte* basis.
 - Some states are **temporarily holding some or all procedural terminations** as a mitigation strategy to ensure compliance with federal renewal requirements or have voluntarily implemented a strategy to delay procedural terminations to conduct additional outreach. These states may report zero procedural terminations and/or a significantly higher share of pending renewals at the end of a reporting month.
- Data specifications are available at: <https://www.medicaid.gov/resources-for-states/downloads/eligibility-processing-data-specs-august-2024.pdf>.

Please consider these factors and other information when interpreting renewal outcomes and comparing information across states.

¹ See Unwinding and Returning to Regular Operations after COVID-19, available at [Medicaid.gov/unwinding](https://www.medicaid.gov/unwinding).

What You Should Know When Using the Data: Updated Eligibility Processing Data Report

States submit updated monthly renewal outcomes data after the original monthly report submission. This **Updated Medicaid and CHIP Eligibility Processing Data (Updated Eligibility Processing Data)**, made available on a quarterly-basis in this Snapshot, includes aggregate data on states' renewal processes and outcomes for renewals previously reported in prior months as pending as of three months after the renewal was due.

- “Pending” renewals are renewals that are due in a reporting month but that a state has not completed processing by the renewal due date.
- Renewals may be pending by the end of the month they are due for a number of reasons including, but not limited to:
 - Beneficiaries returning renewal forms late in the renewal process, leaving little time for the state to complete processing;
 - States holding procedural terminations and/or other terminations (e.g., by adopting CMS-approved strategies to delay procedural disenrollments for one month while conducting outreach); or
 - States being unable to process all renewals received before the end of the month in which they are due.
- The Updated Eligibility Processing Data may also reflect states' corrections to previously reported data.
- Data specifications are available at: <https://www.medicaid.gov/resources-for-states/downloads/eligibility-processing-data-specs-august-2024.pdf>.

What You Should Know When Using the Data: Marketplace and Basic Health Plan Enrollment / Other Data

Marketplace Enrollment Data (Marketplace Data)

- Marketplace enrollment data are from HealthCare.gov Marketplace Operational Data and State-based Marketplace Operational Data.
- Marketplace enrollment represents enrollees who have effectuated their plan selection (i.e., paid their first month's premium, if any). The data are revised every month to reflect new effectuations, as well as retroactive enrollments, cancellations, and terminations, and other data corrections.

Basic Health Program Enrollment / Other Data (BHP Data)

- BHP enrollment includes data reported to CMS by three states: Minnesota (MN), New York (NY), and Oregon (OR).
 - MN and OR operate a BHP, which provides coverage to consumers with incomes at or below 200 percent of the FPL who are not eligible for Medicaid or CHIP and otherwise would be eligible for a QHP. OR implemented its BHP and started reporting BHP enrollment data beginning in July 2024.
 - Effective April 2024, NY transitioned from operating a BHP to a new coverage program, the Essential Plan Expansion (EP), that generally mirrors the state's BHP and is implemented under its approved section 1332 waiver. The EP expands eligibility to certain individuals with estimated household incomes up to 250 percent FPL, including some who would otherwise be enrolled in Medicaid coverage or in a state-funded health insurance program absent the waiver. Even though NY's EP is not a BHP, enrollment in this new coverage program continues to be reported in the BHP enrollment data.

What You Should Know When Using the Data: T-MSIS Analytic Files Separate CHIP Enrollment Data

Separate CHIP Enrollment Data (S-CHIP Data), made available on a quarterly-basis in this Snapshot, include monthly data on children and pregnant adults enrolled in states' separate CHIP programs at any point during the reporting month.

- The S-CHIP Data come from the T-MSIS Analytic Files (TAF).
 - States report the latest information available from state systems in their monthly T-MSIS submissions, including individual-level data about enrollees' Medicaid or CHIP eligibility status.
 - The T-MSIS data are converted into the TAF, which are optimized for monitoring and research purposes.
 - States with T-MSIS data quality or submission issues have the option to provide S-CHIP enrollment counts outside of T-MSIS.
- The S-CHIP Data do not include:
 - Enrollees covered by Medicaid-expansion CHIP. If an individual is enrolled in both Medicaid or Medicaid-expansion CHIP and S-CHIP in a given month, TAF picks the program in which they were last enrolled.
 - Enrollees in dental-only S-CHIP coverage.
- Enrollment definitions in the Performance Indicator Data vary from the TAF's and comparisons should not be made across data sets.
- Data specifications are available at: <https://www.medicaid.gov/medicaid/data-systems/macbis/transformed-medicaid-statistical-information-system-t-msis/index.html>.

October 2024 Key Findings

Medicaid and CHIP Enrollment

- In October 2024, **79.3 million** individuals were enrolled in Medicaid and CHIP.
 - **72.1 million** individuals were enrolled in Medicaid, and **7.2 million** individuals were enrolled in CHIP.
 - **41.7 million** adults were enrolled in Medicaid, and there were **37.6 million** Medicaid child and CHIP enrollees.

Medicaid and CHIP Applications Received

- In October 2024, Medicaid, CHIP, Human Services agencies, and State-based Marketplaces received **2.6 million** applications, or **2 percent** more applications, as compared to September 2024.
 - The number of applications received has increased by **20 percent** since October 2023 and increased by **66 percent** since October 2022.

Totals may not sum due to rounding.

Source: Performance Indicator Data

Notes: Detailed notes on data can be found in the Appendix and on [Data.Medicaid.gov](https://data.medicaid.gov).

October 2024 Key Findings (Continued)

MAGI Application Processing Time

- In October 2024, **67 percent** of MAGI applications were processed in 7 days or less, and **7 percent** of MAGI applications were processed in over 45 days, the regulatory standard for determining eligibility on a basis other than disability, including MAGI-based determinations.

Renewal Outcomes

- In October 2024, of the individuals due for renewal:
 - **75 percent** had their coverage renewed, a two percentage point increase from September 2024.
 - **55 percent** were renewed on an *ex parte* basis, a one percentage point increase from September 2024.
 - **16 percent** were disenrolled, a one percentage point decrease from September 2024.
 - **10 percent** were disenrolled for procedural reasons, a one percentage point decrease from September 2024.

Totals may not sum due to rounding.

Sources: Performance Indicator Data and Eligibility Processing Data

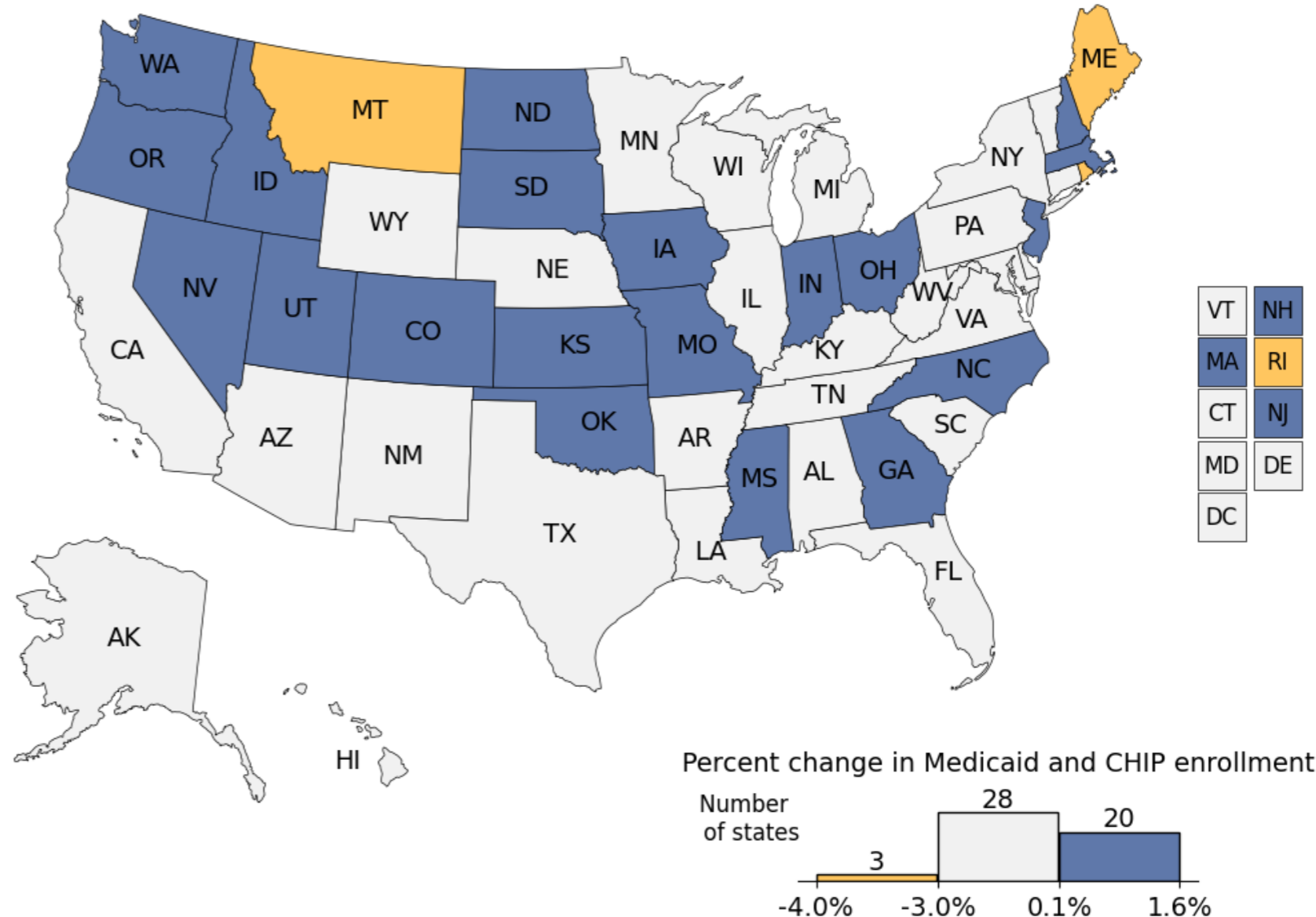
Notes: Detailed notes on data, including if states are excluded from national totals, can be found in the Appendix and on [Data.Medicaid.gov](https://data.medicaid.gov).

October 2024: Total Medicaid and CHIP Enrollment

Monthly Medicaid and CHIP Enrollment, October 2024

- In October 2024, total Medicaid and CHIP enrollment was **79.3 million** individuals nationally, a decrease of **57,000** individuals (0.1 percent) from September 2024.
- Medicaid enrollment was **72.1 million** individuals.
- CHIP enrollment was **7.2 million** individuals.

Percent Change in Medicaid and CHIP Enrollment, September 2024 to October 2024



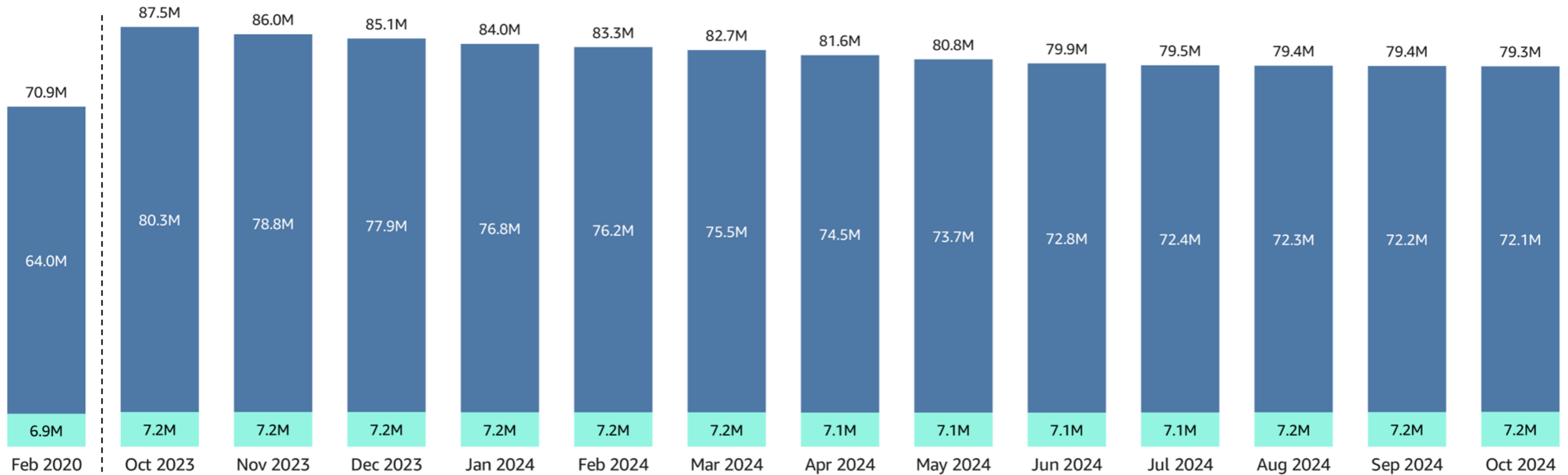
Totals may not sum due to rounding.

Source: Performance Indicator Data

Notes: Detailed notes on data can be found in the Appendix and on [Data.Medicaid.gov](https://data.medicaid.gov).

October 2023 to October 2024: Total Monthly Medicaid and CHIP Enrollment

- Between October 2023 and October 2024, Medicaid enrollment decreased by **8.2 million** individuals (10 percent) and CHIP enrollment increased by **29,000** individuals (0.4 percent).
- Between February 2020 (the pre-pandemic baseline) and October 2024, Medicaid enrollment increased by **8.0 million** individuals (13 percent) and CHIP enrollment increased by **390,000** individuals (6 percent).



CHIP Medicaid

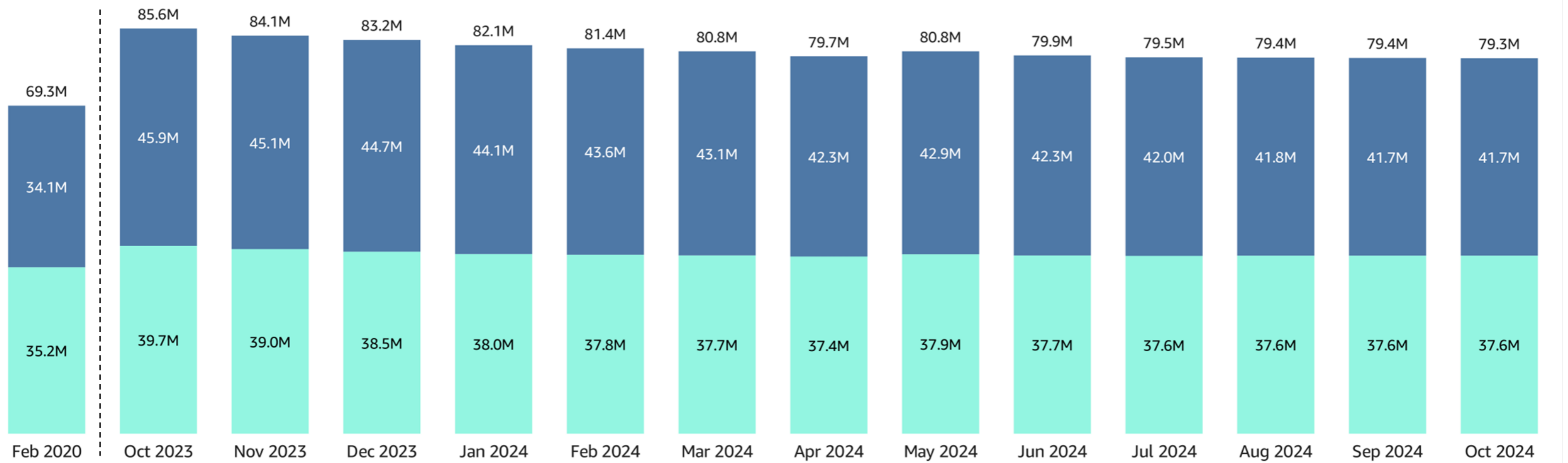
Totals may not sum due to rounding.

Source: Performance Indicator Data

Notes: Detailed notes on data can be found in the Appendix and on Data.Medicaid.gov.

October 2023 to October 2024: Total Monthly Medicaid Child and CHIP Enrollment and Medicaid Adult Enrollment

- In October 2024, Medicaid child and CHIP enrollment was **37.6 million** individuals and Medicaid adult enrollment was **41.7 million** individuals.
- Between October 2023 and October 2024, Medicaid child and CHIP enrollment decreased by **2.0 million** individuals (5 percent) and Medicaid adult enrollment decreased by **4.2 million** individuals (9 percent).
- Between February 2020 (pre-pandemic baseline) and October 2024, Medicaid child and CHIP enrollment increased by **2.5 million** individuals (7 percent) and Medicaid adult enrollment increased by **7.6 million** individuals (22 percent).



Totals may not sum due to rounding.

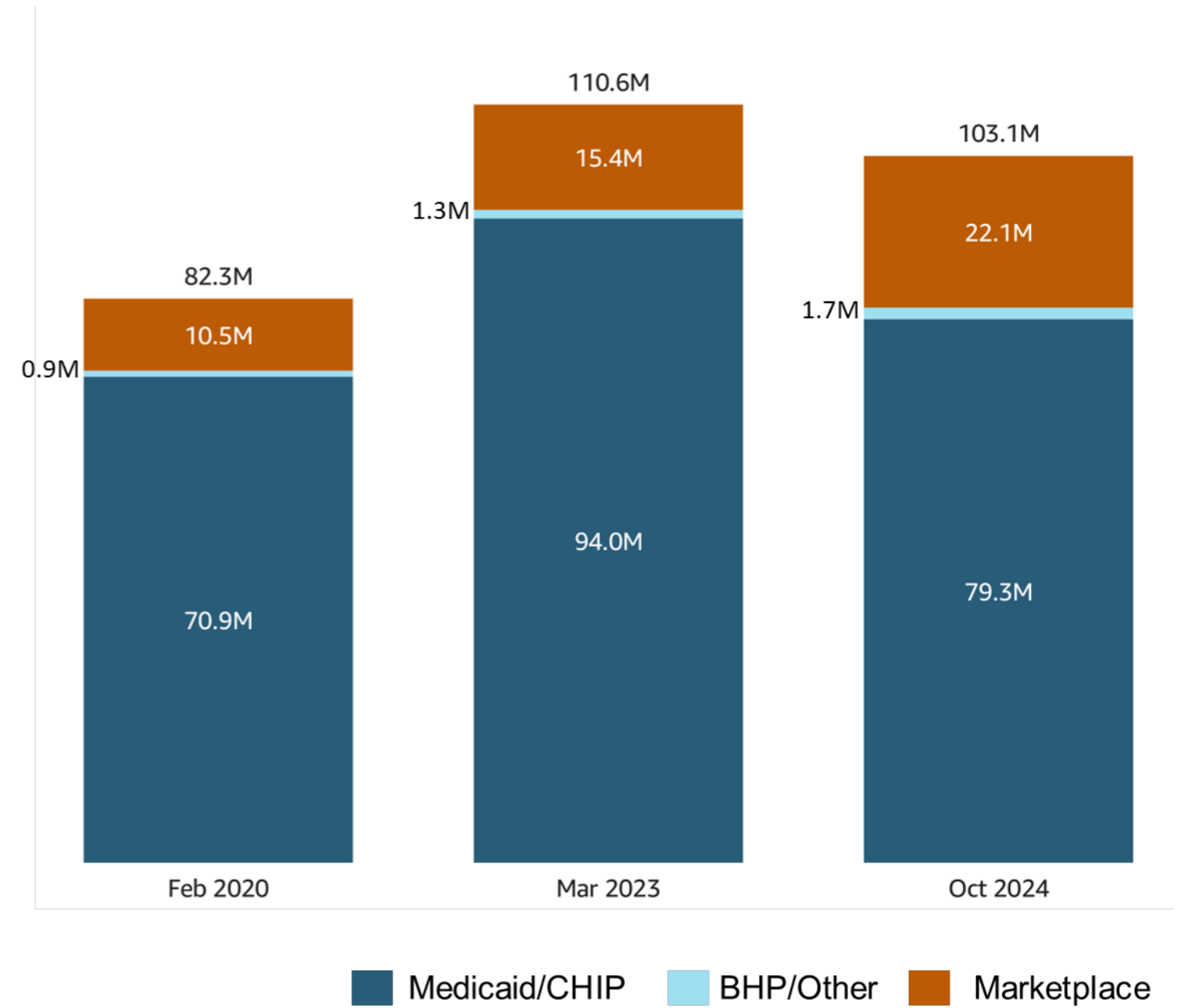
■ Medicaid Child and CHIP Enrollment
 ■ Medicaid Adult Enrollment

Source: Performance Indicator Data

Notes: Detailed notes on data, including if any states did not report data in certain months, can be found in the Appendix and on Data.Medicaid.gov.

October 2024: Total Enrollment in Medicaid and CHIP, BHP/Other, and the Marketplace

- In October 2024, **103.1 million individuals** were enrolled in Medicaid and CHIP, a BHP/Other, or the Marketplace.
 - Medicaid and CHIP enrollment was approximately **79.3 million** individuals.
 - Marketplace enrollment was approximately **22.1 million** individuals.
 - BHP enrollment was approximately **1.7 million** individuals.
- Since March 2023, total enrollment across Medicaid, CHIP, BHP, and the Marketplace has declined by **7.5 million** individuals (7 percent). This is a **14.7 million** individual decrease for Medicaid and CHIP and a **6.8 million** individual increase for the Marketplace.



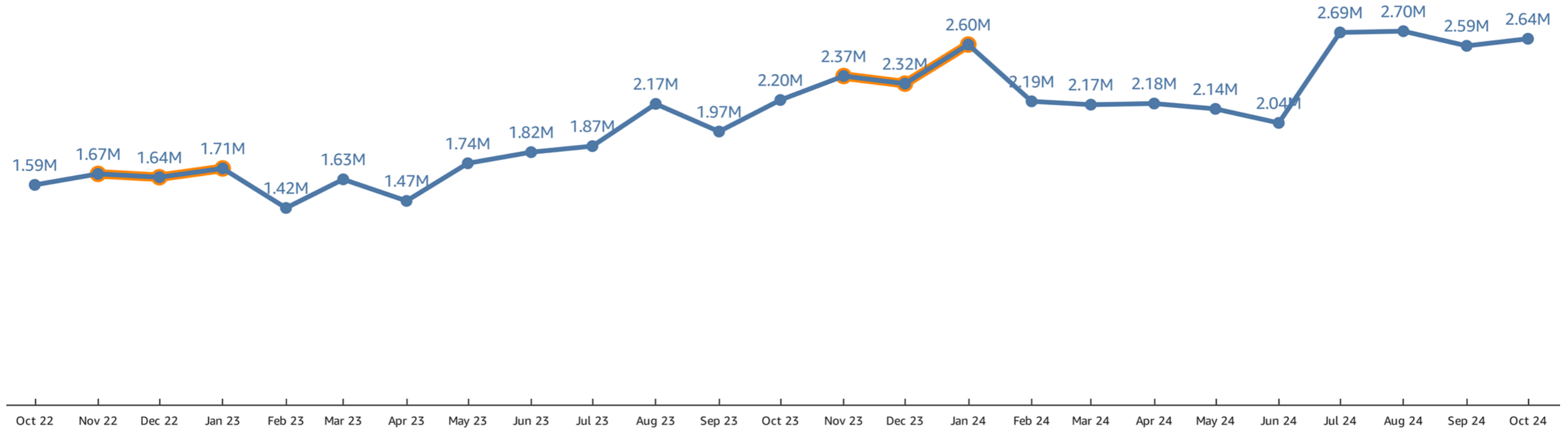
Totals may not sum due to rounding.

Sources: Performance Indicator Data, Marketplace Data, and BHP Data

Notes: BHP enrollment includes data reported to CMS by three states: MN, NY*, and OR. NY transitioned from operating a BHP to an Essential Plan (EP) Expansion, but its EP Expansion enrollment continues to be reported in the BHP/Other enrollment data. Detailed notes on data can be found in the Appendix and on [Data.Medicaid.gov](https://www.data.medicaid.gov).

October 2022 to October 2024: Applications for Medicaid and CHIP Received by States

- In October 2024, **2.6 million** applications for Medicaid or CHIP were received by states, which is **20 percent** more applications than were received in October 2023.



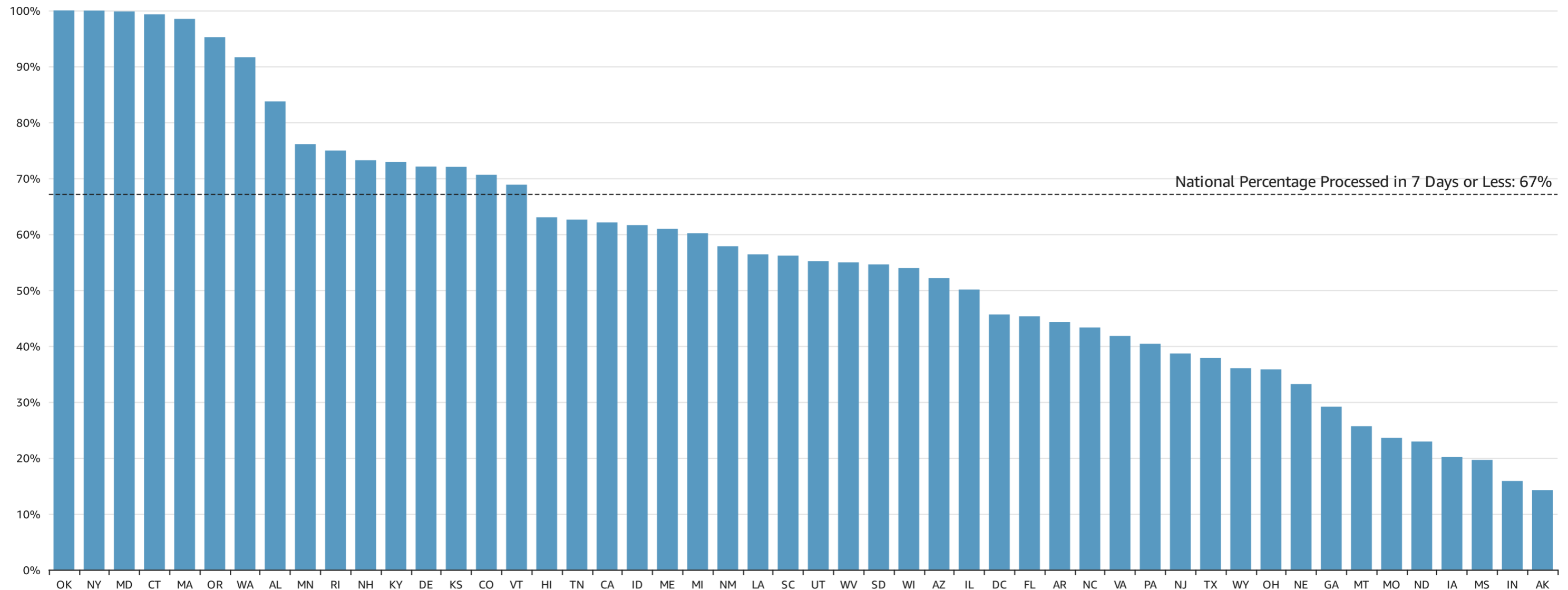
 Marketplace Open Enrollment period

Source: Performance Indicator Data

Notes: The data displayed do not include applications transferred from the Federally Facilitated Marketplace to states, and thus do not capture the total number of applications states receive. Detailed notes on data, including if any states did not report data in certain months, can be found in the Appendix and on Data.Medicaid.gov.

October 2024: Percentage of MAGI Applications States Processed in 7 Days or Less

- In October 2024, nationally, **67 percent** of MAGI determinations at application were processed in 7 days or less. **16 states** were at or above this national percentage.

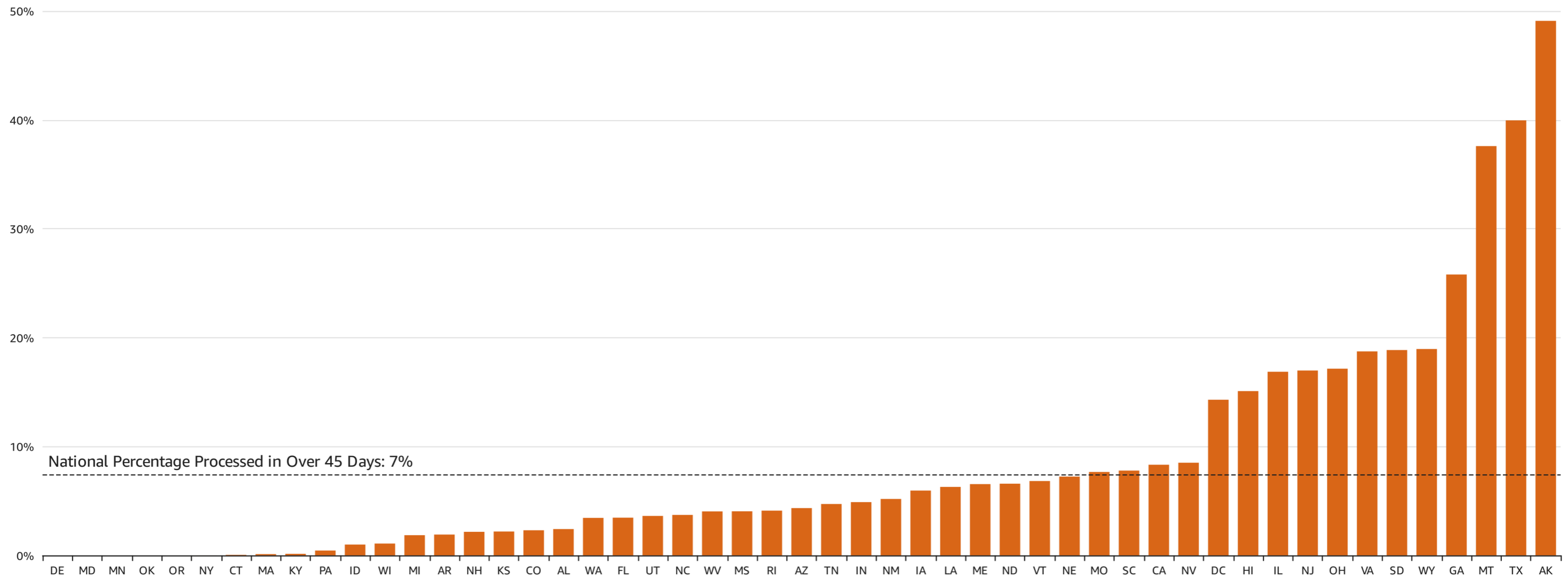


Source: Performance Indicator Data

Notes: Detailed notes on data, including if states are excluded, can be found in the Appendix and on Data.Medicaid.gov.

October 2024: Percentage of MAGI Applications States Processed in Over 45 Days

- In October 2024, nationally, **7 percent** of MAGI determinations at application were processed in over 45 days, the regulatory standard for determining eligibility on a basis other than disability, including MAGI-based determinations. **16 states** were at or above this national percentage.

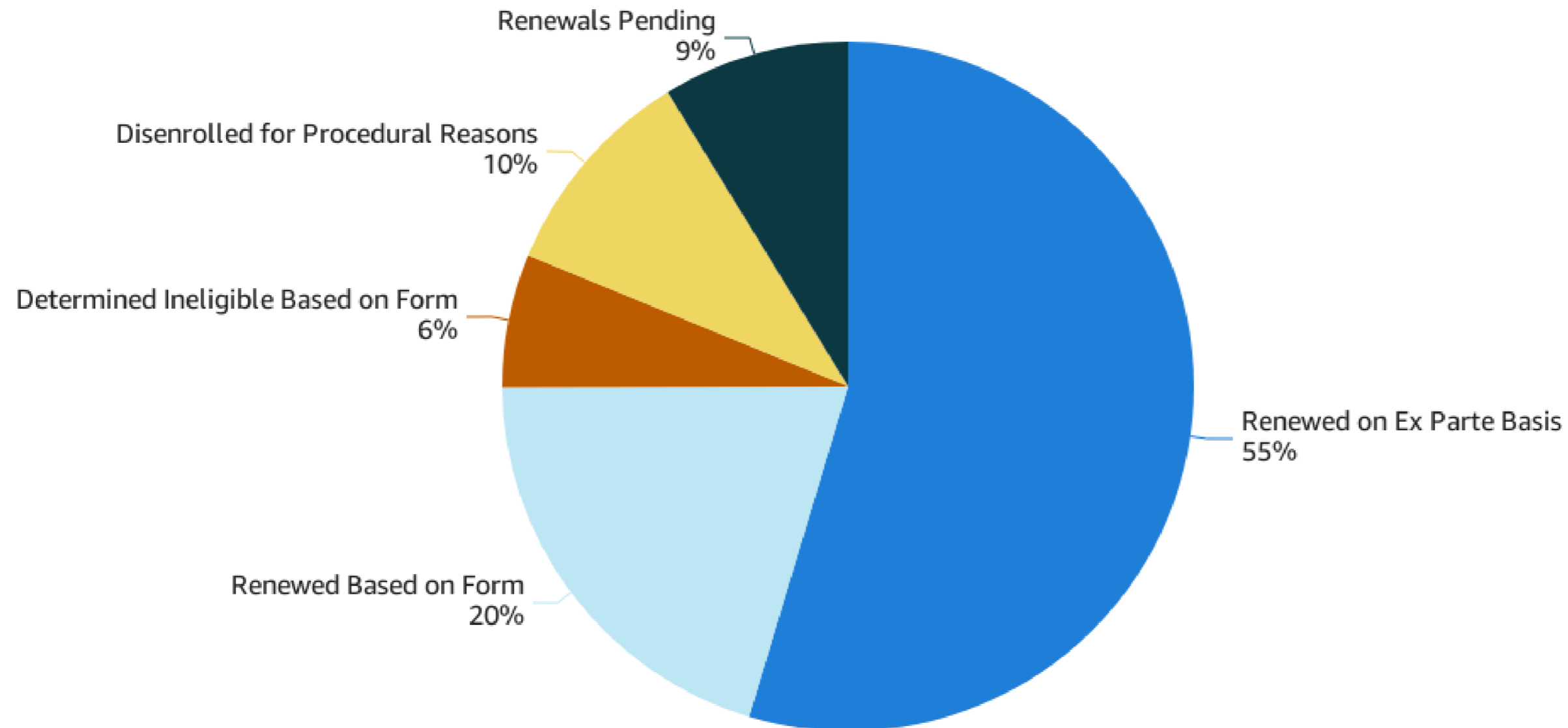


Source: Performance Indicator Data

Notes: Detailed notes on data, including if states are excluded, can be found in the Appendix and on Data.Medicaid.gov.

October 2024: Distribution of Renewal Outcomes

- In October 2024, of the **5.7 million individuals** due for renewal, **75 percent** had their coverage successfully renewed, **16 percent** were disenrolled, and **9 percent** had their renewals pending at the end of the month.



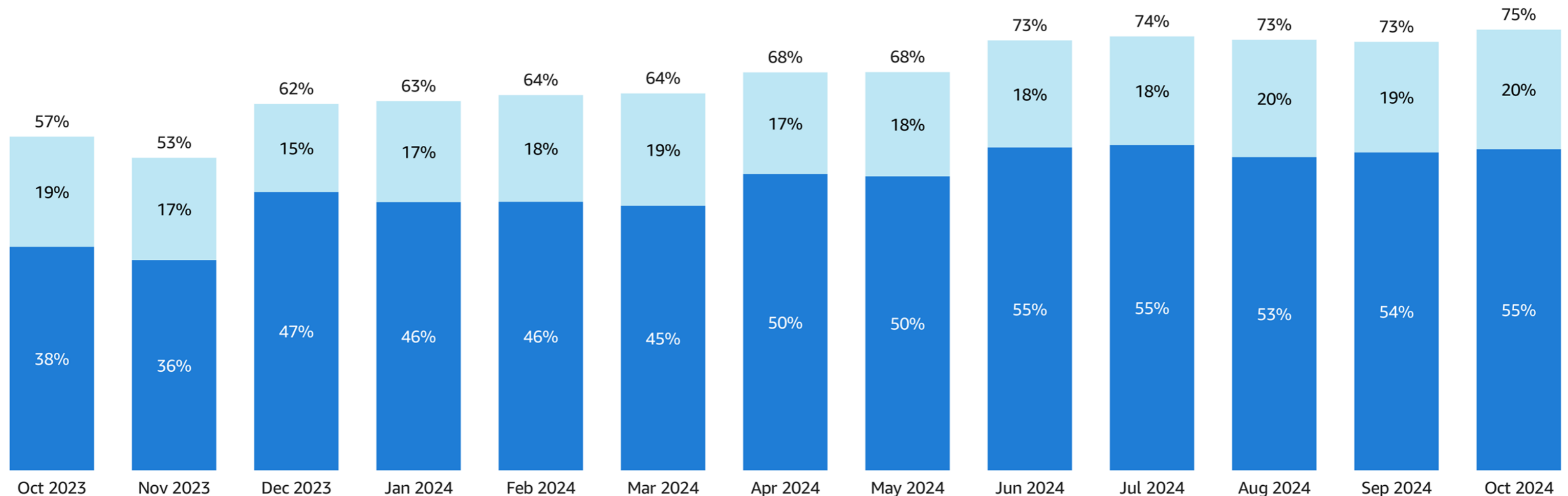
Percentages may not sum to totals due to rounding.

Source: Eligibility Processing Data

Notes: States may complete renewals pending in the month after the reporting month. Detailed notes on data can be found in the Appendix and on Data.Medicaid.gov.

October 2023 to October 2024: National Retention Rates at Renewal, by Renewal Type

- In October 2024, of the individuals due for renewal, **55 percent** were renewed on an *ex parte* basis and **20 percent** were renewed based on a form.
- Since June 2024, retention rates at renewal exceeded **70 percent** each month.



■ Renewed on *Ex Parte* Basis
 ■ Renewed Based on Form

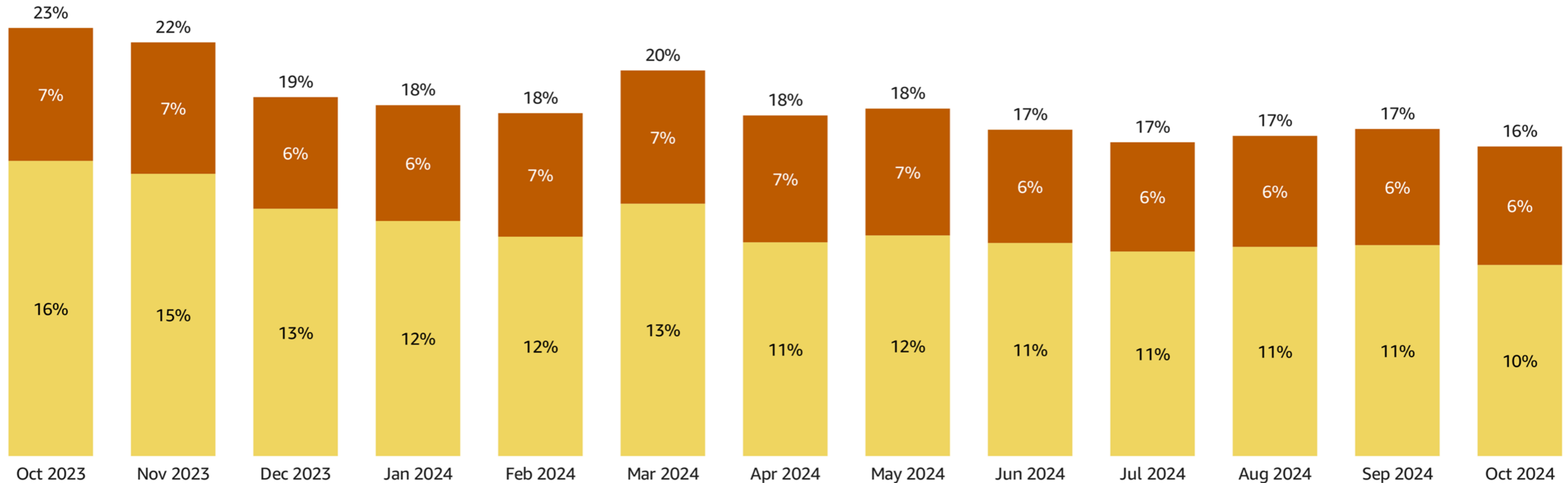
Percentages may not sum to totals due to rounding.

Source: Eligibility Processing Data

Notes: Detailed notes on data, including if states are excluded, can be found in the Appendix and on Data.Medicaid.gov.

October 2023 to October 2024: National Disenrollment Rates at Renewal, by Disenrollment Type

- In October 2024, of the individuals due for renewal, **10 percent** were disenrolled for procedural reasons and **6 percent** were disenrolled based on a form.
- Since December 2023, procedural disenrollment rates have been less than **15 percent**.



Disenrolled for Procedural Reasons
 Determined Ineligible Based on Form

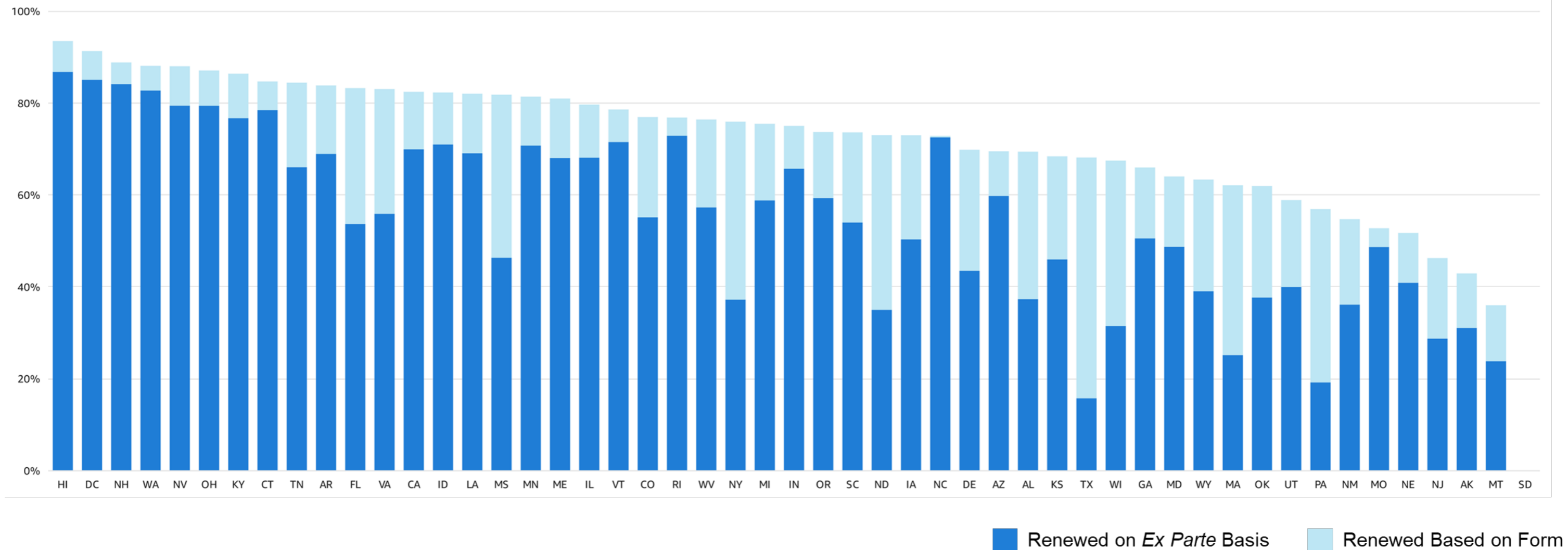
Percentages may not sum to totals due to rounding.

Source: Eligibility Processing Data

Notes: Detailed notes on data, including if states are excluded, can be found in the Appendix and on Data.Medicaid.gov.

October 2024: States' Coverage Retention Rates at Renewal, by Renewal Type

- In October 2024, states' coverage retention rates at renewal ranged from **36 to 93 percent** and *ex parte* rates ranged from **16 to 87 percent**.

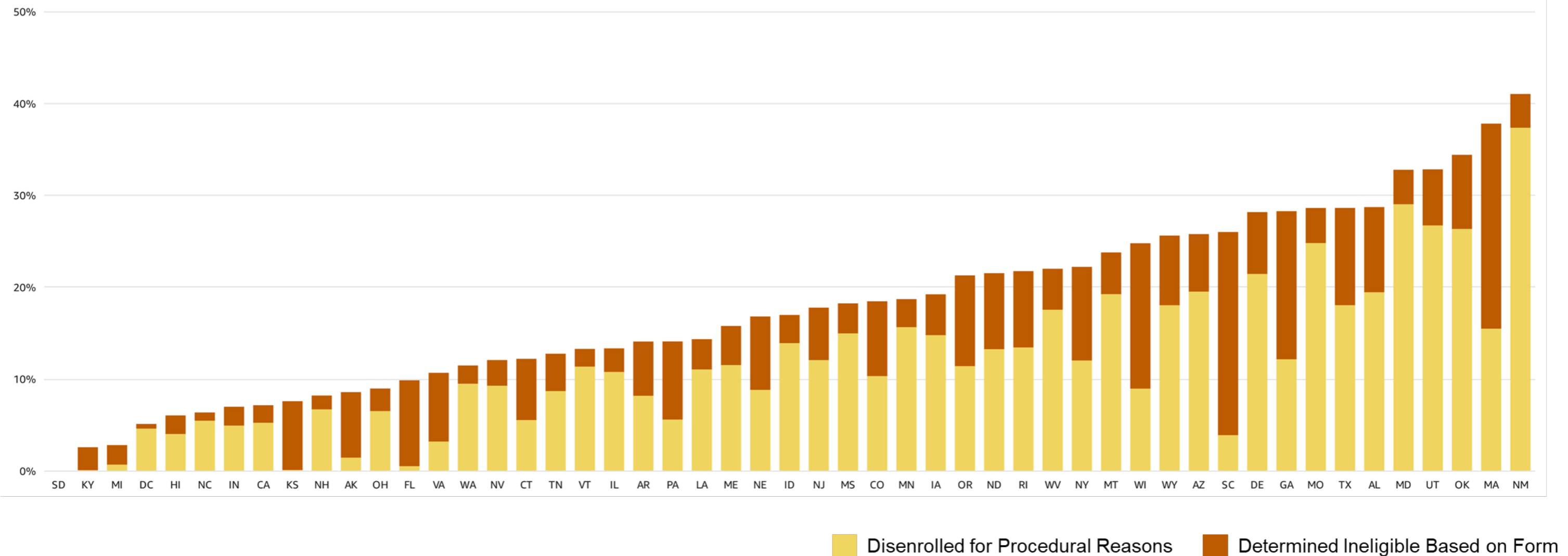


Source: Eligibility Processing Data

Notes: Detailed notes on data, including explanations for non-reporting, can be found in the Appendix and on Data.Medicaid.gov.

October 2024: States' Coverage Disenrollment Rates at Renewal, by Disenrollment Type

- In October 2024, states' rates of disenrollment at renewal ranged from **3 to 41 percent** and procedural disenrollment rates ranged from **0.1 to 37 percent**.



Source: Eligibility Processing Data

Notes: Detailed notes on data, including explanations for non-reporting, can be found in the Appendix and on Data.Medicaid.gov.

State Data Tables

October 2024: Medicaid and CHIP Enrollment by State

| State | Total Medicaid and CHIP Enrollment | | Medicaid Enrollment | | CHIP Enrollment | |
|-------|------------------------------------|----------------------|---------------------|----------------------|-----------------|----------------------|
| | Oct 2024 | % Change Prior Month | Oct 2024 | % Change Prior Month | Oct 2024 | % Change Prior Month |
| AK | 250,131 | -0.4% | 235,214 | -0.4% | 14,917 | -0.3% |
| AL | 952,073 | -0.1% | 771,020 | -0.2% | 181,053 | 0.3% |
| AR | 821,017 | 0.1% | 740,193 | 0.0% | 80,824 | 1% |
| AZ | 1,963,200 | -1% | 1,837,274 | -1% | 125,926 | -1% |
| CA | 13,431,928 | -0.1% | 12,199,634 | -0.1% | 1,232,294 | -0.2% |
| CO | 1,185,011 | 1% | 1,050,373 | 1% | 134,638 | 1% |
| CT | 932,771 | -0.4% | 910,673 | -0.5% | 22,098 | 3% |
| DC | 255,313 | -1% | 238,028 | -1% | 17,285 | -1% |
| DE | 250,651 | -0.4% | 238,843 | -1% | 11,808 | 3% |
| FL | 3,765,231 | -1% | 3,601,937 | -1% | 163,294 | -0.4% |
| GA | 1,978,819 | 0.4% | 1,735,459 | 0.5% | 243,360 | 0.0% |
| HI | 402,818 | 0.0% | 380,759 | -0.1% | 22,059 | 2% |
| IA | 674,985 | 0.2% | 586,732 | 0.1% | 88,253 | 1% |
| ID | 314,819 | 0.5% | 294,664 | 0.5% | 20,155 | 1% |
| IL | 3,243,413 | -0.2% | 2,957,608 | -0.2% | 285,805 | 0.0% |
| IN | 1,804,429 | 2% | 1,663,291 | 2% | 141,138 | 0.4% |
| KS | 411,381 | 1% | 334,880 | 1% | 76,501 | 1% |
| KY | 1,385,144 | 0.0% | 1,255,289 | -0.1% | 129,855 | 1% |
| LA | 1,511,871 | -1% | 1,364,434 | -1% | 147,437 | 0.4% |
| MA | 1,658,082 | 0.3% | 1,460,282 | 0.0% | 197,800 | 2% |
| MD | 1,525,201 | -1% | 1,327,165 | -1% | 198,036 | 2% |
| ME | 350,738 | -4% | 325,633 | -4% | 25,105 | 0.2% |
| MI | 2,364,114 | 0.0% | 2,196,410 | -0.1% | 167,704 | 2% |
| MN | 1,167,743 | -0.4% | 1,163,025 | -0.4% | 4,718 | 2% |
| MO | 1,269,477 | 0.3% | 1,135,126 | 0.4% | 134,351 | 0.1% |
| MS | 602,825 | 0.2% | 518,360 | 0.1% | 84,465 | 1% |

Source: Performance Indicator Data

Notes: Detailed notes on data can be found in the Appendix and on Data.Medicaid.gov.

October 2024: Medicaid and CHIP Enrollment by State, cont.

| State | Total Medicaid and CHIP Enrollment | | Medicaid Enrollment | | CHIP Enrollment | |
|--------------|------------------------------------|----------------------|---------------------|----------------------|------------------|----------------------|
| | Oct 2024 | % Change Prior Month | Oct 2024 | % Change Prior Month | Oct 2024 | % Change Prior Month |
| MT | 218,858 | -3% | 197,914 | -3% | 20,944 | -3% |
| NC | 2,776,584 | 1% | 2,433,285 | 1% | 343,299 | 0.1% |
| ND | 104,911 | 1% | 100,086 | 0.4% | 4,825 | 3% |
| NE | 341,081 | -0.4% | 304,300 | -1% | 36,781 | 0.2% |
| NH | 183,563 | 0.2% | 165,238 | 0.1% | 18,325 | 0.5% |
| NJ | 1,753,610 | 1% | 1,507,857 | 1% | 245,753 | 1% |
| NM | 764,407 | -1% | 714,422 | -1% | 49,985 | 0.1% |
| NV | 760,981 | 1% | 710,466 | 1% | 50,515 | 1% |
| NY | 6,652,419 | -0.1% | 5,983,032 | -0.1% | 669,387 | 1% |
| OH | 2,875,313 | 0.1% | 2,637,875 | 0.1% | 237,438 | 1% |
| OK | 988,293 | 1% | 910,977 | 1% | 77,316 | 2% |
| OR | 1,300,251 | 0.5% | 1,114,712 | 0.4% | 185,539 | 1% |
| PA | 3,106,529 | 0.0% | 2,818,504 | 0.0% | 288,025 | 1% |
| RI | 306,344 | -3% | 273,124 | -4% | 33,220 | 7% |
| SC | 1,037,498 | -0.1% | 939,876 | -0.4% | 97,622 | 3% |
| SD | 142,007 | 1% | 125,474 | 1% | 16,533 | -0.2% |
| TN | 1,436,211 | -0.3% | 1,271,910 | -1% | 164,301 | 2% |
| TX | 4,178,724 | -0.4% | 3,836,874 | -1% | 341,850 | 3% |
| UT | 339,379 | 0.4% | 302,714 | 0.2% | 36,665 | 1% |
| VA | 1,809,526 | -0.4% | 1,613,039 | -1% | 196,487 | 0.0% |
| VT | 157,471 | 0.0% | 152,573 | -0.1% | 4,898 | 2% |
| WA | 1,837,170 | 0.4% | 1,779,850 | 0.3% | 57,320 | 2% |
| WI | 1,189,424 | 0.0% | 1,111,757 | -0.1% | 77,667 | 1% |
| WV | 510,971 | -0.3% | 472,816 | -0.3% | 38,155 | 0.0% |
| WY | 63,292 | -1% | 57,720 | -1% | 5,572 | 2% |
| Total | 79,308,002 | -0.1% | 72,058,701 | -0.1% | 7,249,301 | 1% |

Source: Performance Indicator Data

Notes: Detailed notes on data can be found in the Appendix and on Data.Medicaid.gov.

October 2024: Adult and Child Enrollment in Medicaid and CHIP by State

| State | Medicaid Adult Enrollment | | Medicaid Child and CHIP Enrollment | | Medicaid Child Enrollment | | CHIP Enrollment | |
|-------|---------------------------|----------------------|------------------------------------|----------------------|---------------------------|----------------------|-----------------|----------------------|
| | Oct 2024 | % Change Prior Month | Oct 2024 | % Change Prior Month | Oct 2024 | % Change Prior Month | Oct 2024 | % Change Prior Month |
| AK | 151,731 | -0.4% | 98,400 | -1% | 83,483 | -1% | 14,917 | -0.3% |
| AL | 275,903 | -0.3% | 676,170 | -0.1% | 495,117 | -0.2% | 181,053 | 0.3% |
| AR | 400,548 | -0.3% | 420,469 | 0.5% | 339,645 | 0.4% | 80,824 | 1% |
| AZ | 1,129,873 | -1% | 833,327 | -0.4% | 707,401 | -0.3% | 125,926 | -1% |
| CA | 8,430,477 | 0.0% | 5,001,451 | -0.4% | 3,769,157 | -0.4% | 1,232,294 | -0.2% |
| CO | 659,582 | 1% | 525,429 | 1% | 390,791 | 1% | 134,638 | 1% |
| CT | 564,533 | -1% | 368,238 | 0.0% | 346,140 | -0.2% | 22,098 | 3% |
| DC | 160,625 | -1% | 94,688 | -1% | 77,403 | -1% | 17,285 | -1% |
| DE | 139,661 | -1% | 110,990 | 0.0% | 99,182 | -0.3% | 11,808 | 3% |
| FL | 1,340,325 | -1% | 2,424,906 | -1% | 2,261,612 | -1% | 163,294 | -0.4% |
| GA | 570,675 | 0.0% | 1,408,144 | 1% | 1,164,784 | 1% | 243,360 | 0.0% |
| HI | 249,963 | -0.2% | 152,855 | 0.3% | 130,796 | 0.1% | 22,059 | 2% |
| IA | 336,768 | 0.1% | 338,217 | 0.3% | 249,964 | 0.1% | 88,253 | 1% |
| ID | 158,511 | 1% | 156,308 | 0.3% | 136,153 | 0.2% | 20,155 | 1% |
| IL | 1,806,197 | -0.2% | 1,437,216 | -0.1% | 1,151,411 | -0.2% | 285,805 | 0.0% |
| IN | 967,297 | 1% | 837,132 | 2% | 695,994 | 3% | 141,138 | 0.4% |
| KS | 130,646 | 2% | 280,735 | -0.1% | 204,234 | -0.4% | 76,501 | 1% |
| KY | 757,105 | 0.0% | 628,039 | 0.1% | 498,184 | -0.2% | 129,855 | 1% |
| LA | 800,784 | -2% | 711,087 | 0.2% | 563,650 | 0.1% | 147,437 | 0.4% |
| MA | 945,134 | 0.2% | 712,948 | 1% | 515,148 | -0.2% | 197,800 | 2% |
| MD | 832,738 | -2% | 692,463 | -0.3% | 494,427 | -1% | 198,036 | 2% |
| ME | 211,296 | -5% | 139,442 | -2% | 114,337 | -2% | 25,105 | 0.2% |
| MI | 1,439,566 | 0.0% | 924,548 | 0.0% | 756,844 | -0.4% | 167,704 | 2% |
| MN | 577,141 | -1% | 590,602 | 0.1% | 585,884 | 0.1% | 4,718 | 2% |
| MO | 657,122 | 1% | 612,355 | -0.1% | 478,004 | -0.1% | 134,351 | 0.1% |
| MS | 203,850 | -0.3% | 398,975 | 0.4% | 314,510 | 0.4% | 84,465 | 1% |

Source: Performance Indicator Data

Notes: Detailed notes on data can be found in the Appendix and on Data.Medicaid.gov.

October 2024: Adult and Child Enrollment in Medicaid and CHIP by State, cont.

| State | Medicaid Adult Enrollment | | Medicaid Child and CHIP Enrollment | | Medicaid Child Enrollment | | CHIP Enrollment | |
|--------------|---------------------------|----------------------|------------------------------------|----------------------|---------------------------|----------------------|------------------|----------------------|
| | Oct 2024 | % Change Prior Month | Oct 2024 | % Change Prior Month | Oct 2024 | % Change Prior Month | Oct 2024 | % Change Prior Month |
| MT | 124,270 | -3% | 94,588 | -3% | 73,644 | -3% | 20,944 | -3% |
| NC | 1,363,084 | 1% | 1,413,500 | 0.4% | 1,070,201 | 1% | 343,299 | 0.1% |
| ND | 53,514 | 1% | 51,397 | 1% | 46,572 | 0.2% | 4,825 | 3% |
| NE | 165,501 | -0.5% | 175,580 | -0.4% | 138,799 | -1% | 36,781 | 0.2% |
| NH | 94,368 | 0.0% | 89,195 | 0.4% | 70,870 | 0.3% | 18,325 | 0.5% |
| NJ | 955,676 | 0.4% | 797,934 | 1% | 552,181 | 1% | 245,753 | 1% |
| NM | 423,693 | -1% | 340,714 | -0.5% | 290,729 | -1% | 49,985 | 0.1% |
| NV | 432,845 | 1% | 328,136 | 0.5% | 277,621 | 0.5% | 50,515 | 1% |
| NY | 4,190,922 | -0.2% | 2,461,497 | 0.1% | 1,792,110 | -0.1% | 669,387 | 1% |
| OH | 1,661,964 | 0.0% | 1,213,349 | 0.3% | 975,911 | 0.2% | 237,438 | 1% |
| OK | 467,701 | 2% | 520,592 | 1% | 443,276 | 0.4% | 77,316 | 2% |
| OR | 820,528 | 1% | 479,723 | 0.3% | 294,184 | -0.1% | 185,539 | 1% |
| PA | 1,653,238 | 0.0% | 1,453,291 | 0.1% | 1,165,266 | 0.0% | 288,025 | 1% |
| RI | 183,056 | -6% | 123,288 | 0.3% | 90,068 | -2% | 33,220 | 7% |
| SC | 402,094 | -0.5% | 635,404 | 0.1% | 537,782 | -0.4% | 97,622 | 3% |
| SD | 59,973 | 1% | 82,034 | 1% | 65,501 | 1% | 16,533 | -0.2% |
| TN | 592,844 | -0.3% | 843,367 | -0.2% | 679,066 | -1% | 164,301 | 2% |
| TX | 989,339 | 0.3% | 3,189,385 | -1% | 2,847,535 | -1% | 341,850 | 3% |
| UT | 163,270 | 0.5% | 176,109 | 0.3% | 139,444 | 0.0% | 36,665 | 1% |
| VA | 948,769 | -0.5% | 860,757 | -0.4% | 664,270 | -1% | 196,487 | 0.0% |
| VT | 98,548 | -0.3% | 58,923 | 0.4% | 54,025 | 0.3% | 4,898 | 2% |
| WA | 997,053 | 0.4% | 840,117 | 0.3% | 782,797 | 0.2% | 57,320 | 2% |
| WI | 626,526 | 0.1% | 562,898 | -0.1% | 485,231 | -0.4% | 77,667 | 1% |
| WV | 304,603 | -0.1% | 206,368 | -1% | 168,213 | -1% | 38,155 | 0.0% |
| WY | 20,468 | -1% | 42,824 | -1% | 37,252 | -1% | 5,572 | 2% |
| Total | 41,691,898 | -0.1% | 37,616,104 | 0.0% | 30,366,803 | -0.2% | 7,249,301 | 1% |

Source: Performance Indicator Data

Notes: Detailed notes on data can be found in the Appendix and on Data.Medicaid.gov.

October 2024: MAGI Application Processing Times by State

| State | Percent Processed in | | | | |
|-------|----------------------|----------|-----------|------------|--------------|
| | Less Than 24 Hours | 1-7 Days | 8-30 Days | 31-45 Days | Over 45 Days |
| AK | 3% | 11% | 29% | 7% | 49% |
| AL | 76% | 7% | 9% | 5% | 2% |
| AR | 9% | 36% | 49% | 4% | 2% |
| AZ | 41% | 11% | 32% | 11% | 4% |
| CA | 51% | 11% | 22% | 8% | 8% |
| CO | 41% | 29% | 23% | 4% | 2% |
| CT | 98% | 1% | 1% | 0.1% | 0.0% |
| DC | 25% | 21% | 32% | 8% | 14% |
| DE | 5% | 67% | 10% | 18% | 0.0% |
| FL | 23% | 23% | 41% | 10% | 3% |
| GA | 8% | 21% | 35% | 10% | 26% |
| HI | 60% | 3% | 21% | 1% | 15% |
| IA | 11% | 9% | 58% | 16% | 6% |
| ID | 36% | 26% | 32% | 6% | 1% |
| IL | 25% | 25% | 26% | 7% | 17% |
| IN | 1% | 15% | 58% | 21% | 5% |
| KS | 19% | 53% | 23% | 3% | 2% |
| KY | 63% | 10% | 26% | 1% | 0.1% |
| LA | 38% | 18% | 31% | 6% | 6% |
| MA | 92% | 6% | 1% | 0.1% | 0.1% |
| MD | 95% | 5% | 0.2% | 0.0% | 0.0% |
| ME | 21% | 40% | 29% | 3% | 7% |
| MI | 37% | 23% | 28% | 10% | 2% |
| MN | 52% | 24% | 24% | 0.0% | 0.0% |
| MO | 13% | 11% | 61% | 8% | 8% |
| MS | 2% | 18% | 67% | 10% | 4% |

Source: Performance Indicator Data

Notes: Detailed notes on data can be found in the Appendix and on Data.Medicaid.gov.

October 2024: MAGI Application Processing Times by State, cont.

| State | Percent Processed in | | | | |
|--------------|----------------------|------------|------------|------------|--------------|
| | Less Than 24 Hours | 1-7 Days | 8-30 Days | 31-45 Days | Over 45 Days |
| MT | 11% | 15% | 25% | 12% | 38% |
| NC | 9% | 34% | 24% | 29% | 4% |
| ND | 2% | 21% | 54% | 17% | 7% |
| NE | 8% | 25% | 35% | 24% | 7% |
| NH | 29% | 44% | 23% | 2% | 2% |
| NJ | 3% | 36% | 34% | 10% | 17% |
| NM | 39% | 19% | 22% | 15% | 5% |
| NV | - | - | - | 17% | 9% |
| NY | 100% | 0.0% | 0.0% | 0.0% | 0.0% |
| OH | 12% | 23% | 37% | 10% | 17% |
| OK | 100% | 0.0% | 0.0% | 0.0% | 0.0% |
| OR | 76% | 19% | 5% | 0.0% | 0.0% |
| PA | 14% | 26% | 52% | 7% | 0.4% |
| RI | 63% | 12% | 18% | 3% | 4% |
| SC | 13% | 43% | 33% | 3% | 8% |
| SD | 39% | 15% | 19% | 8% | 19% |
| TN | 44% | 19% | 27% | 6% | 5% |
| TX | 10% | 27% | 16% | 6% | 40% |
| UT | 30% | 25% | 35% | 6% | 4% |
| VA | 22% | 20% | 21% | 18% | 19% |
| VT | 61% | 8% | 14% | 10% | 7% |
| WA | 85% | 6% | 4% | 1% | 3% |
| WI | 34% | 20% | 34% | 11% | 1% |
| WV | 22% | 33% | 34% | 7% | 4% |
| WY | 17% | 19% | 37% | 8% | 19% |
| Total | 53% | 14% | 20% | 6% | 7% |

Source: Performance Indicator Data

Notes: Detailed notes on data can be found in the Appendix and on Data.Medicaid.gov.

October 2024: Coverage Retention and Disenrollment Rates by State

| State | Total Number Due for Renewal in the Reporting Month | Percent of the Total Number Due for Renewal in Reporting Month | | | | |
|-------|---|--|--|-------------------|--|--|
| | | (1) Total Renewed in Medicaid/CHIP | (2) Total Disenrolled from Medicaid/CHIP | (3) Total Pending | (1a) Renewed on an <i>Ex Parte</i> Basis | (2a) Disenrolled for a Procedural or Administrative Reason |
| AK | 24,219 | 43% | 9% | 49% | 31% | 1% |
| AL | 121,260 | 69% | 29% | 2% | 37% | 19% |
| AR | 60,654 | 84% | 14% | 2% | 69% | 8% |
| AZ | 137,789 | 69% | 26% | 5% | 60% | 19% |
| CA | 855,310 | 82% | 7% | 10% | 70% | 5% |
| CO | 86,471 | 77% | 18% | 5% | 55% | 10% |
| CT | 94,099 | 85% | 12% | 3% | 78% | 6% |
| DC | 34,577 | 91% | 5% | 4% | 85% | 5% |
| DE | 20,317 | 70% | 28% | 2% | 43% | 21% |
| FL | 236,491 | 83% | 10% | 7% | 54% | 0.5% |
| GA | 233,288 | 66% | 28% | 6% | 50% | 12% |
| HI | 22,257 | 93% | 6% | 1% | 87% | 4% |
| IA | 60,409 | 73% | 19% | 8% | 50% | 15% |
| ID | 22,636 | 82% | 17% | 1% | 71% | 14% |
| IL | 238,451 | 80% | 13% | 7% | 68% | 11% |
| IN | 115,190 | 75% | 7% | 18% | 66% | 5% |
| KS | 36,574 | 68% | 8% | 24% | 46% | 0.1% |
| KY | 61,174 | 86% | 3% | 11% | 77% | 0.1% |
| LA | 126,446 | 82% | 14% | 4% | 69% | 11% |
| MA | 109,532 | 62% | 38% | 0.2% | 25% | 15% |
| MD | 101,283 | 64% | 33% | 3% | 49% | 29% |
| ME | 43,924 | 81% | 16% | 3% | 68% | 11% |
| MI | 223,454 | 75% | 3% | 22% | 59% | 1% |
| MN | 93,870 | 81% | 19% | 0.0% | 71% | 16% |
| MO | 100,383 | 53% | 29% | 19% | 49% | 25% |
| MS | 41,704 | 82% | 18% | 0.0% | 46% | 15% |

Source: Eligibility Processing Data

Notes: Total Renewed, Total Disenrolled and Total Pending equals 100 percent of renewals due. Renewed on a *Ex Parte* Basis is a subset of Total Renewed, and Disenrolled for a Procedural Reason is a subset of Total Disenrolled. Detailed notes on data can be found in the Appendix and on [Data.Medicaid.gov](https://www.data.medicaid.gov).

October 2024: Coverage Retention and Disenrollment Rates by State, cont.

| State | Total Number Due for Renewal in the Reporting Month | Percent of the Total Number Due for Renewal in Reporting Month | | | | |
|--------------|---|--|--|-------------------|--|--|
| | | (1) Total Renewed in Medicaid/CHIP | (2) Total Disenrolled from Medicaid/CHIP | (3) Total Pending | (1a) Renewed on an <i>Ex Parte</i> Basis | (2a) Disenrolled for a Procedural or Administrative Reason |
| MT | 22,515 | 36% | 24% | 40% | 24% | 19% |
| NC | 201,372 | 73% | 6% | 21% | 72% | 5% |
| ND | 7,609 | 73% | 22% | 6% | 35% | 13% |
| NE | 32,595 | 52% | 17% | 32% | 41% | 9% |
| NH | 13,563 | 89% | 8% | 3% | 84% | 7% |
| NJ | 71,577 | 46% | 18% | 36% | 29% | 12% |
| NM | 59,561 | 55% | 41% | 4% | 36% | 37% |
| NV | 51,589 | 88% | 12% | 0.0% | 79% | 9% |
| NY | 477,709 | 76% | 22% | 2% | 37% | 12% |
| OH | 249,082 | 87% | 9% | 4% | 79% | 6% |
| OK | 63,869 | 62% | 34% | 4% | 38% | 26% |
| OR | 334 | 74% | 21% | 5% | 59% | 11% |
| PA | 224,506 | 57% | 14% | 29% | 19% | 6% |
| RI | 11,992 | 77% | 22% | 1% | 73% | 13% |
| SC | 63,702 | 74% | 26% | 0.5% | 54% | 4% |
| SD | 0 | - | - | - | - | - |
| TN | 93,912 | 84% | 13% | 3% | 66% | 9% |
| TX | 329,857 | 68% | 29% | 3% | 16% | 18% |
| UT | 30,254 | 59% | 33% | 8% | 40% | 27% |
| VA | 172,311 | 83% | 11% | 6% | 56% | 3% |
| VT | 9,786 | 79% | 13% | 8% | 71% | 11% |
| WA | 115,200 | 88% | 11% | 0.5% | 83% | 9% |
| WI | 63,770 | 67% | 25% | 8% | 31% | 9% |
| WV | 32,720 | 76% | 22% | 2% | 57% | 18% |
| WY | 5,693 | 63% | 26% | 11% | 39% | 18% |
| Total | 5,706,840 | 75% | 16% | 9% | 55% | 10% |

Source: Eligibility Processing Data

Notes: Total Renewed, Total Disenrolled and Total Pending equals 100 percent of renewals due. Renewed on a *Ex Parte* Basis is a subset of Total Renewed, and Disenrolled for a Procedural Reason is a subset of Total Disenrolled. Detailed notes on data can be found in the Appendix and on [Data.Medicaid.gov](https://www.data.medicaid.gov).

October 2024: Call Center Volumes, Wait Times and Abandonment Rates by State

| State | Volume | | Wait Time (Minutes) | | Abandonment Rate | |
|-------|-----------|----------------------|---------------------|----------------------|------------------|--------------------|
| | Oct 2024 | % Change Prior Month | Oct 2024 | % Change Prior Month | Oct 2024 | Change Prior Month |
| AK | 32,776 | 2% | 37 | -30% | 38% | -9% |
| AL | 60,538 | 12% | 3 | 50% | 13% | 5% |
| AR | 218,671 | -14% | 13 | 30% | 2% | -0.1% |
| AZ | 75,214 | -8% | 7 | 17% | 10% | 1% |
| CA | 283,628 | 4% | 4 | -20% | 10% | 8% |
| CO | 25,742 | -5% | 2 | -50% | 1% | -2% |
| CT | 145,286 | 18% | 19 | 36% | 17% | 6% |
| DC | 43,414 | 12% | 0 | 0.0% | 2% | 1% |
| DE | 24,501 | 3% | 1 | 0.0% | 20% | 0.2% |
| FL | 2,421,231 | 11% | 18 | -38% | 24% | -5% |
| GA | 36,236 | 9% | 21 | 0.0% | 1% | 0.1% |
| HI | 26,644 | -4% | 102 | 70% | 31% | -1% |
| IA | 30,103 | 8% | 4 | -43% | 15% | -7% |
| ID | 45,236 | 1% | 18 | -36% | 7% | -0.3% |
| IL | 365,772 | 11% | 37 | 9% | 44% | 2% |
| IN | 274,570 | 6% | 4 | -33% | 6% | -3% |
| KS | 37,998 | 0.0% | 0 | 0.0% | 2% | 1% |
| KY | 104,017 | 17% | 1 | -50% | 4% | 1% |
| LA | 376,848 | 11% | 4 | 0.0% | 9% | 1% |
| MA | 261,460 | 11% | 1 | 0.0% | 1% | -0.3% |
| MD | 64,550 | 16% | 6 | -45% | 17% | -9% |
| ME | 38,964 | 1% | 8 | 0.0% | 13% | 0.0% |
| MI | 172,714 | -7% | 0 | -100% | 0.3% | -3% |
| MN | 32,990 | 10% | 6 | -25% | 17% | -3% |
| MO | 109,762 | -5% | 33 | 3% | 48% | -4% |
| MS | 8,262 | 27% | 0 | 0.0% | 3% | 1% |

Source: Performance Indicator Data

Notes: Detailed notes on data can be found in the Appendix and on [Data.Medicaid.gov](https://www.data.medicaid.gov).

October 2024: Call Center Volumes, Wait Times and Abandonment Rates by State, cont.

| State | Volume | | Wait Time (Minutes) | | Abandonment Rate | |
|-------|----------|----------------------|---------------------|----------------------|------------------|--------------------|
| | Oct 2024 | % Change Prior Month | Oct 2024 | % Change Prior Month | Oct 2024 | Change Prior Month |
| MT | 27,390 | 27% | 42 | 8% | 56% | 6% |
| NC | 23,583 | 7% | 0 | 0.0% | 1% | 0.0% |
| ND | 28,363 | 4% | 3 | 200% | 11% | 8% |
| NE | 52,243 | 9% | 10 | 11% | 15% | -0.4% |
| NH | 34,728 | 4% | 5 | -29% | 5% | -2% |
| NJ | 214,075 | 5% | 4 | 0.0% | 11% | 1% |
| NM | 188,756 | 31% | 8 | 14% | 6% | 3% |
| NV | 119,024 | 9% | 48 | 60% | 34% | 7% |
| NY | 680,288 | 7% | 1 | 0.0% | 2% | -0.3% |
| OH | 201,524 | 12% | 1 | -50% | 3% | 0.0% |
| OK | 107,561 | 2% | 23 | -15% | 23% | -11% |
| OR | 122,797 | 9% | 11 | 0.0% | 21% | -2% |
| PA | 329,412 | 2% | 20 | -17% | 21% | -14% |
| RI | 20,767 | 23% | 17 | 6% | 26% | 4% |
| SC | 140,606 | 6% | 1 | -50% | 3% | -3% |
| SD | NR | NR | NR | NR | NR | NR |
| TN | 85,239 | 8% | 0 | 0.0% | 0.2% | -0.1% |
| TX | 877,538 | 1% | 0 | 0.0% | 1% | -0.4% |
| UT | 113,288 | 5% | 14 | -13% | 18% | -1% |
| VA | 86,590 | 10% | 1 | 0.0% | 2% | -2% |
| VT | 20,606 | 17% | 1 | 0.0% | 3% | 1% |
| WA | 58,408 | 5% | 1 | 0.0% | 10% | -1% |
| WI | 299,335 | 7% | 10 | -17% | 14% | -5% |
| WV | 35,302 | 32% | 11 | 10% | 19% | 6% |
| WY | 11,534 | -1% | 1 | 0.0% | 0.3% | 0.1% |

Source: Performance Indicator Data

Notes: NR = Not reported. SD does not have call centers. Detailed notes on data can be found in the Appendix and on Data.Medicaid.gov.

Appendix

Data Notes

| Data Type | Data Notes |
|---------------------------------------|--|
| Medicaid and CHIP Enrollment Data | <ul style="list-style-type: none"> Arizona did not report adult and child Medicaid breakouts from February 2020 to April 2024. Prior to April 2024, the national Medicaid child and CHIP enrollment totals include Arizona's CHIP enrollment only, and the national Medicaid adult enrollment totals exclude Arizona's Medicaid adult enrollment. Texas's CHIP enrollment increase in July 2024 is partially attributed to the state updating its reporting methodology. |
| Applications Received Data | <ul style="list-style-type: none"> Kansas did not report applications received data until May 2023. New York made additional changes to its reporting methodology for Medicaid and CHIP applications beginning in July 2024 to correctly include additional applications required under CMS's reporting specifications. Data reported may be an undercount because a state may not include all applications received or may not include applications for some populations or limited benefit programs. Data reported may be an overcount because a state may include duplicate applications, accounts transferred from HealthCare.gov, administrative data transfers or renewals/redeterminations. |
| MAGI Application Processing Time Data | <ul style="list-style-type: none"> Nevada's data for applications processed in less than 24 hours, 1-7 days, and 8-30 days are excluded from national calculations because the state did not report to CMS's data specifications. Nevada's data for applications processed in 31-45 days and over 45 days does not include all MAGI determinations on applications. Counts may not include all MAGI determinations on applications. Counts may include redeterminations or some non-MAGI applications in the data. Counts may report processing time at the application/household level and not at the individual level. |
| Call Center Data | <ul style="list-style-type: none"> South Dakota does not have a call center and does not report call center metrics. Hawaii did not report its call center data (call center wait time and abandonment rate) to CMS's reporting specifications. |

Data Notes, cont. 1

| Data Type | Detailed Data Notes |
|-----------------------------|--|
| Marketplace Enrollment Data | <ul style="list-style-type: none"> Enrollment data include data from the FFM, SBM-FPs, and SBMs. |
| BHP/Other Data | <ul style="list-style-type: none"> BHP enrollment includes data reported to CMS by three states, Minnesota, New York, and Oregon. As of the March 2024 data, New York reports enrollment in the Essential Plan Expansion (EP) Program, which is a new coverage program implemented under a section 1332 waiver. As of the July 2024 data, Oregon began reporting BHP enrollment data after implementing its BHP program in the same month. January 2020 BHP enrollment data are included in the February 2020 enrollment total. |
| Eligibility Processing Data | <ul style="list-style-type: none"> Georgia reported data for individuals who continue to be eligible following a change in circumstances and were granted a new 12-month eligibility period during the reporting period, along with data on individuals due for renewal in the month. North Carolina reports renewal outcomes for only initiated renewals scheduled for completion in the report month, and as such, the data do not reflect renewals that should have been completed in the reporting period that the state was unable to initiate by the end of the report month. South Dakota did not complete renewals in October 2024 as a mitigation strategy while the state fixes its new eligibility system to ensure it conducts redeterminations at the individual level. Oregon is processing renewals on an extended timeline between May 2024 and February 2025. During this period, the state's <i>ex parte</i> rates may be low or even zero, since there could be instances when no <i>ex parte</i> renewals were conducted in a given month. In most states, the effective date for procedural terminations is the beginning of the following month in which the renewal was due (e.g., procedural terminations for renewals due and reported in the month of March would have an effective termination date of April 1). |

Data Notes, cont. 2

Eligibility Processing Data

- Among states that had a cohort of unwinding-related renewals due in the following month(s), these states paused some or all procedural terminations in the following months:

| | AK | CO | DC | DE | IL | KS | KY | MD | ME | MI | MN | NH | NJ | NM | NV | NY | OR | VT | WV |
|----------------|----|----|----|----|----|----|----|----|----|----|----|----|----|----|----|----|----|----|----|
| October 2023 | ● | ● | ● | ● | ● | ● | ● | ● | ● | ● | ● | ● | ● | ● | ● | ● | ● | ● | ● |
| November 2023 | ● | ● | ● | ● | ● | ● | ● | | ● | ● | ● | ● | ● | ● | ● | ● | ● | ● | |
| December 2023 | ● | ● | ● | ● | ● | ● | ● | | ● | ● | ● | ● | ● | ● | ● | ● | ● | ● | |
| January 2024 | ● | ● | ● | ● | ● | ● | ● | | ● | ● | | ● | | ● | | ● | ● | ● | |
| February 2024 | ● | ● | ● | ● | ● | ● | ● | | ● | ● | | ● | | ● | | ● | ● | | |
| March 2024 | ● | ● | ● | ● | ● | ● | ● | | ● | ● | | ● | ● | ● | | ● | ● | | |
| April 2024 | ● | ● | ● | ● | ● | ● | ● | | ● | ● | | ● | ● | ● | | ● | ● | ● | |
| May 2024 | ● | ● | ● | ● | ● | ● | ● | | ● | ● | | ● | ● | ● | | ● | | | |
| June 2024 | ● | ● | ● | ● | | ● | ● | | ● | ● | | ● | | ● | | ● | | | |
| July 2024 | ● | ● | ● | ● | | ● | ● | | ● | ● | | ● | | ● | | ● | | | |
| August 2024 | ● | ● | ● | ● | | ● | ● | | ● | ● | | ● | | ● | | ● | | | |
| September 2024 | ● | ● | ● | ● | | ● | ● | | | ● | | ● | | ● | | ● | | | |
| October 2024 | ● | ● | ● | ● | | ● | ● | | | ● | | ● | | ● | | ● | | | |

Data Sources by Slide

| Data Sources | Slide Title |
|---|--|
| Medicaid and CHIP Eligibility and Enrollment Performance Indicator Data, preliminary data | <ul style="list-style-type: none"> • Total Medicaid and CHIP Enrollment • Total Monthly Medicaid and CHIP Enrollment • Total Monthly Medicaid Child and CHIP Enrollment and Medicaid Adult Enrollment • Total Enrollment in Medicaid and CHIP, BHP/Other, and the Marketplace • Applications for Medicaid and CHIP Received by States • Percentage of MAGI Applications States Processed in 7 Days or Less • Percentage of MAGI Applications States Processed in Over 45 Days |
| Marketplace enrollment data are from HealthCare.gov Marketplace Operational Data and State-based Marketplace Operational Data | <ul style="list-style-type: none"> • Total Enrollment in Medicaid and CHIP, BHP/Other, and the Marketplace |
| Medicaid and CHIP Eligibility Processing Data | <ul style="list-style-type: none"> • Distribution of Renewal Outcomes • National Retention Rates at Renewal, by Renewal Type • National Disenrollment Rates at Renewal, by Disenrollment Type • States' Coverage Retention Rates at Renewal, by Renewal Type • States' Coverage Disenrollment Rates at Renewal, by Disenrollment Type |