



# February 2026: Medicaid and CHIP Eligibility Operations and Enrollment Snapshot



May 29, 2026

# Eligibility Operations and Enrollment Snapshot

- To promote transparency and provide insights into states' Medicaid and Children's Health Insurance Program (CHIP) eligibility operations and enrollment, this Snapshot captures state reporting of Performance Indicator Data, Eligibility Processing Data,<sup>1</sup> and Transformed Medicaid Statistical Information System (T-MSIS) data focusing on:
  - Medicaid and CHIP enrollment;
  - Total applications submitted to Medicaid, CHIP, Human Services agencies, and State-based Marketplaces;
  - Modified adjusted gross income (MAGI) application processing times;
  - Renewal outcomes; and
  - Call center metrics.
- CMS releases this Snapshot on a monthly-basis, providing current month and retrospective data to convey a national and state-specific picture of Medicaid and CHIP eligibility and enrollment operations, as well as Basic Health Program (BHP) enrollment. CMS releases additional data on a quarterly-basis, including data on separate CHIP program enrollment and updated renewal outcomes. The Snapshot with this additional data will be released on the last month of the quarter.

<sup>1</sup> More information on the Performance Indicator Data Set can be found at [Medicaid.gov/performance-indicator-data](https://www.Medicaid.gov/performance-indicator-data). More information on the Eligibility Processing Data Report can be found at: [Medicaid.gov/eligibility-processing-data](https://www.Medicaid.gov/eligibility-processing-data).

# What You Should Know When Using the Data: Performance Indicator Data Set

The **Medicaid and CHIP Eligibility and Enrollment Performance Indicator Data Set (Performance Indicator Data)** includes preliminary monthly aggregate data on states' eligibility and enrollment processes.

- States submit these data to CMS monthly.
- Definitions of elements in the Performance Indicator Data vary from other data sets, including T-MSIS and Medicaid and CHIP Eligibility Processing Data Report, and comparisons should not be made across data sets.
- **Medicaid and CHIP enrollment counts** include individuals receiving comprehensive Medicaid and CHIP benefits and represent a point-in-time count on the last day of the calendar month. CHIP enrollment includes all individuals with CHIP-funded coverage, including children enrolled in Medicaid-expansion CHIP, children enrolled in a separate CHIP, and pregnant adult women enrolled in a separate CHIP.
- **MAGI application processing time data** represent the length of time it takes state Medicaid and CHIP agencies to conduct all final MAGI determinations (including Medicaid MAGI and CHIP) for individuals at application, regardless of date of application.
  - Application processing time data are influenced by state policies, practices including verification processes, and other factors including application volume, staffing, and level of automation in a state's eligibility system.
  - States may prioritize processing older applications. As these are completed, the data would reflect longer processing times, with the volume and age of pending applications decreasing.
  - Processing time data exclude renewals and redeterminations, and the data do not reflect the state's volume of pending applications.
- CMS released **state call center data** for the first time in July 2023. There is wide variation in how states operate their call centers, making it difficult to compare these data.
- Data specifications are available at: <https://www.medicaid.gov/medicaid/downloads/performance-indicators-datadictionary.pdf>.

# What You Should Know When Using the Data: Eligibility Processing Data Report

The **Medicaid and CHIP Eligibility Processing Data Report (Eligibility Processing Data)** includes monthly aggregate data on states' renewal processes and outcomes.

- **Medicaid and CHIP renewal outcomes are reported by cohort.** States report outcomes for all individuals in the month in which renewals for the cohort are due, even if some renewals were completed in a prior month. These data represent the outcome of renewals due in the reporting month (generally effective the first of the following month).
- State-reported data may reflect **routine renewal data, or a combination of unwinding-related renewal data and routine renewal data.**
- Multiple factors, including state-adopted mitigations and other strategies, may influence renewal outcomes and reporting in a state.<sup>1</sup> For example:
  - **States with an *ex parte* mitigation strategy** that use data sources to complete a renewal after a form is sent may report those renewals as completed based on the return of a renewal form and underreport the number of individuals renewed on an *ex parte* basis.
- Data specifications are available at: [Eligibility Processing Data Specs](#).

Please consider these factors and other information when interpreting renewal outcomes and comparing information across states.

<sup>1</sup> See Unwinding and Returning to Regular Operations after COVID-19, available at [Medicaid.gov/unwinding](https://www.Medicaid.gov/unwinding).

# What You Should Know When Using the Data: Updated Eligibility Processing Data Report

States submit updated monthly renewal outcomes data after the original monthly report submission. This **Updated Medicaid and CHIP Eligibility Processing Data (Updated Eligibility Processing Data)**, made available on a quarterly-basis in this Snapshot, includes aggregate data on states' renewal processes and outcomes for renewals previously reported in prior months as pending as of three months after the renewal was due.

- “Pending” renewals are renewals that are due in a reporting month but that a state has not completed processing by the renewal due date.
- Renewals may be pending by the end of the month they are due for a number of reasons including, but not limited to:
  - Beneficiaries returning renewal forms late in the renewal process, leaving little time for the state to complete processing;
  - States holding procedural terminations and/or other terminations (e.g., by adopting CMS-approved strategies to delay procedural disenrollments for one month while conducting outreach); or
  - States being unable to process all renewals received before the end of the month in which they are due.
- The Updated Eligibility Processing Data may also reflect states' corrections to previously reported data.
- Data specifications are available at: [Eligibility Processing Data Specs](#).

# What You Should Know When Using the Data: Basic Health Plan Enrollment / Other Data

## Basic Health Program Enrollment / Other Data (BHP Data)

- BHP enrollment includes data reported to CMS by the District of Columbia (DC), Minnesota (MN), New York (NY), and Oregon (OR).
  - DC, MN, and OR operate a BHP, which provides coverage to consumers with incomes at or below 200 percent of the FPL who are not eligible for Medicaid or CHIP and otherwise would be eligible for a qualified health plan (QHP). OR implemented its BHP and started reporting BHP enrollment data beginning in July 2024. DC implemented its BHP and started reporting BHP enrollment data beginning in January 2026.
  - Effective April 2024, NY transitioned from operating a BHP to a new coverage program, the Essential Plan Expansion (EP), that generally mirrors the state's BHP and is implemented under its approved section 1332 waiver. The EP expands eligibility to certain individuals with estimated household incomes up to 250 percent FPL, including some who would otherwise be enrolled in Medicaid coverage or in a state-funded health insurance program absent the waiver. Even though NY's EP is not a BHP, enrollment in this new coverage program continues to be reported in the BHP enrollment data.

# What You Should Know When Using the Data: T-MSIS Analytic Files Separate CHIP Enrollment Data

Separate CHIP Enrollment Data (S-CHIP Data), made available on a quarterly-basis in this Snapshot, include monthly data on children and pregnant adult women enrolled in states' separate CHIP programs at any point during the reporting month.

- The S-CHIP Data come from the T-MSIS Analytic Files (TAF).
  - States report the latest information available from state systems in their monthly T-MSIS submissions, including individual-level data about enrollees' Medicaid or CHIP eligibility status.
  - The T-MSIS data are converted into the TAF, which are optimized for monitoring and research purposes.
  - States with T-MSIS data quality or submission issues have the option to provide S-CHIP enrollment counts outside of T-MSIS.
- The S-CHIP Data do not include:
  - Enrollees covered by Medicaid-expansion CHIP. If an individual is enrolled in both Medicaid or Medicaid-expansion CHIP and S-CHIP in a given month, TAF picks the program in which they were last enrolled.
  - Enrollees in dental-only S-CHIP coverage.
- Enrollment definitions in the Performance Indicator Data vary from the TAF's and comparisons should not be made across data sets.
- Data specifications are available at: <https://www.medicaid.gov/medicaid/data-systems/macbis/transformed-medicaid-statistical-information-system-t-msis/index.html>.

# February 2026 Key Findings

## Medicaid and CHIP Enrollment

- In February 2026, **74.9 million** individuals were enrolled in Medicaid and CHIP.
  - **67.7 million** individuals were enrolled in Medicaid, and **7.2 million** individuals were enrolled in CHIP.
  - **39.2 million** adults were enrolled in Medicaid, and there were **35.7 million** Medicaid child and CHIP enrollees.

## Medicaid and CHIP Applications Received

- In February 2026, Medicaid, CHIP, Human Services agencies, and State-based Marketplaces received **2.5 million** applications, which decreased by **12 percent** since January 2026.
  - The number of applications received has increased by **3 percent** since February 2025 and decreased by **8 percent** since February 2024.

Totals may not sum due to rounding.

**Source:** Performance Indicator Data

**Notes:** Detailed notes on data can be found in the Appendix and on [Data.Medicaid.gov](https://data.medicaid.gov).

# February 2026 Key Findings (Continued)

## MAGI Application Processing Time

- In February 2026, **66 percent** of MAGI applications were processed in 7 days or less, a one-percentage point increase from January 2026.
- In February 2026, **7 percent** of MAGI applications were processed in over 45 days, the regulatory standard for determining eligibility on a basis other than disability, including MAGI-based determinations. This is a one-percentage point increase from January 2026.

## Renewal Outcomes

- In February 2026, of the individuals due for renewal:
  - **67 percent** had their coverage renewed, a one-percentage point increase from January 2026.
    - **47 percent** were renewed on an *ex parte* basis, a one-percentage point increase from January 2026.
  - **21 percent** were disenrolled, a one-percentage point increase from January 2026.
    - **15 percent** were disenrolled for procedural reasons, which is consistent with January 2026.
  - **13 percent** had their renewals pending at the end of the month, a two-percentage point decrease from January 2026.

Totals may not sum due to rounding.

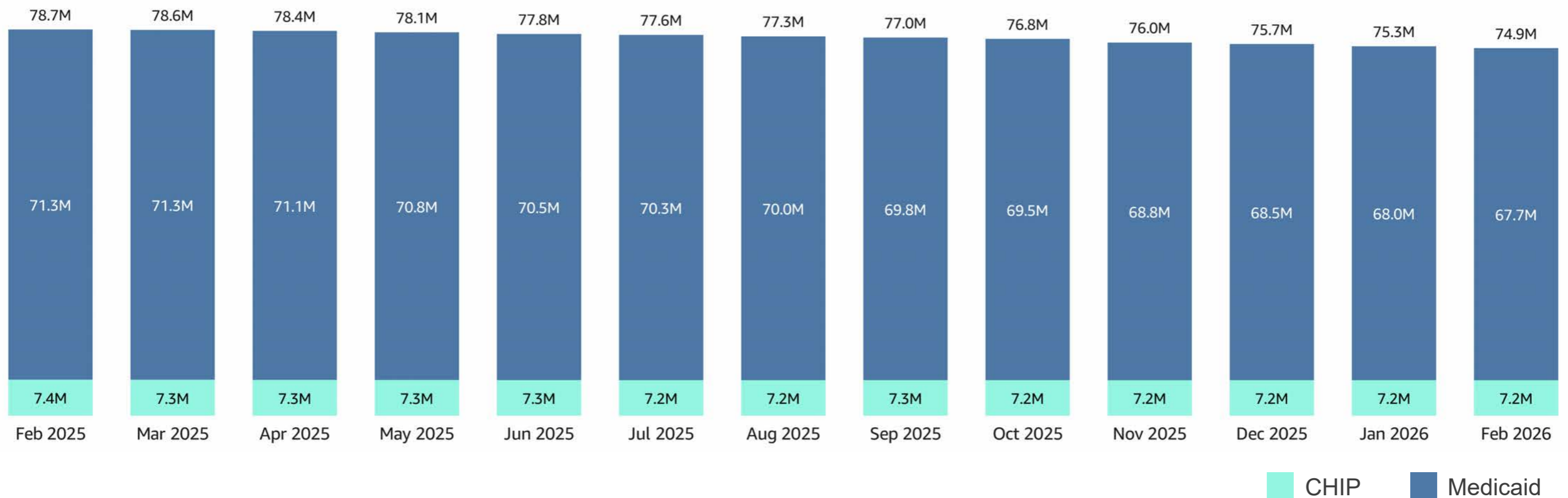
**Sources:** Performance Indicator Data and Eligibility Processing Data

**Notes:** Detailed notes on data, including if states are excluded from national totals, can be found in the Appendix and on [Data.Medicaid.gov](https://data.medicaid.gov).



# February 2025 to February 2026: Total Monthly Medicaid and CHIP Enrollment

- Between February 2025 and February 2026, Medicaid enrollment decreased by **3.7 million** individuals (5 percent) and CHIP enrollment decreased by **130,000** individuals (2 percent).



CHIP Medicaid

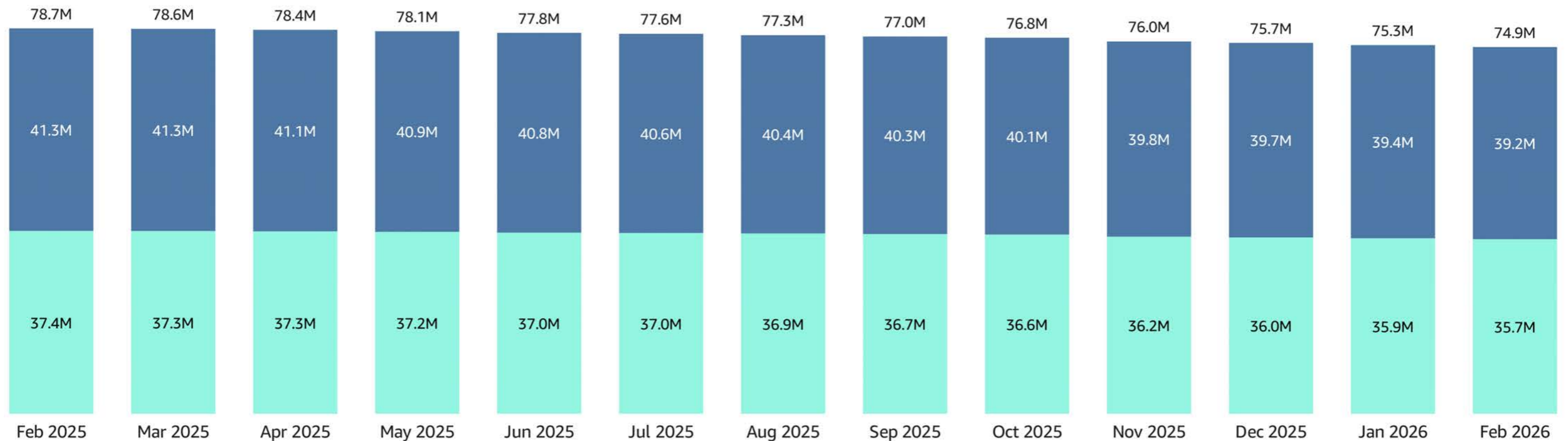
Totals may not sum due to rounding.

Sources: Performance Indicator Data

Notes: Detailed notes on data can be found in the Appendix and on [Data.Medicaid.gov](https://Data.Medicaid.gov).

# February 2025 to February 2026: Total Monthly Medicaid Child and CHIP Enrollment and Medicaid Adult Enrollment

- In February 2026, Medicaid child and CHIP enrollment was **35.7 million** individuals and Medicaid adult enrollment was **39.2 million** individuals.
- Between February 2025 and February 2026, Medicaid child and CHIP enrollment decreased by **1.7 million** individuals (5 percent) and Medicaid adult enrollment decreased by **2.1 million** individuals (5 percent).



Totals may not sum due to rounding.

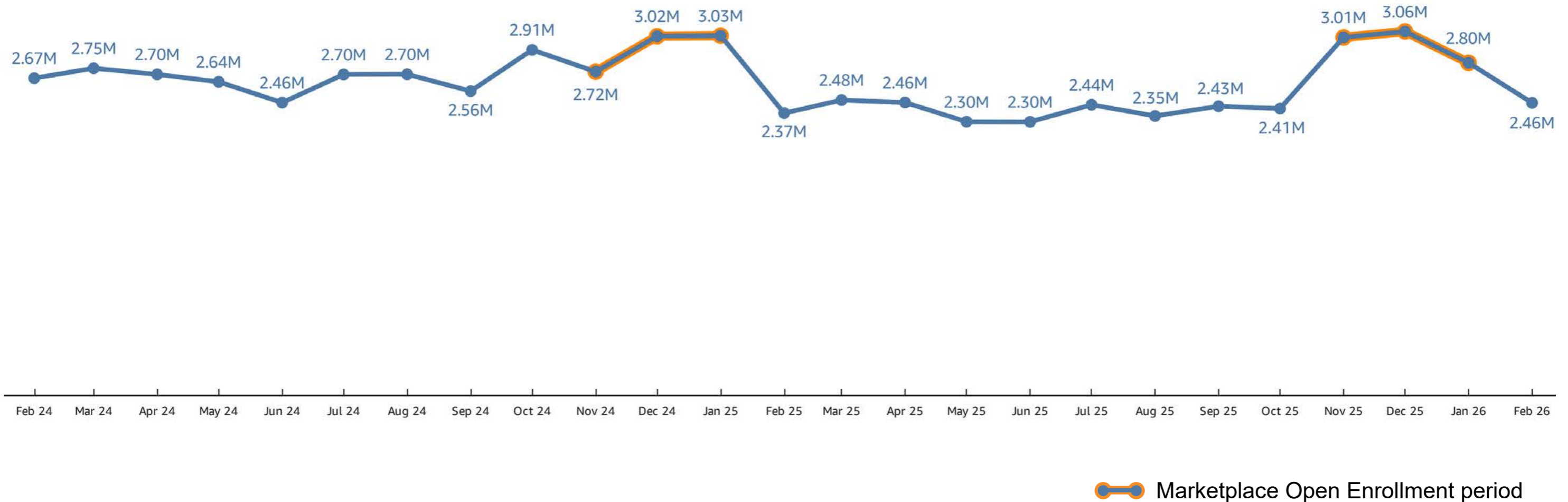
■ Medicaid Child and CHIP Enrollment
 ■ Medicaid Adult Enrollment

Source: Performance Indicator Data

Notes: Detailed notes on data, including if any states did not report data in certain months, can be found in the Appendix and on [Data.Medicaid.gov](https://Data.Medicaid.gov).

# February 2024 to February 2026: Applications for Medicaid and CHIP Received by States

- In February 2026, **2.5 million** applications for Medicaid or CHIP were received by states, which is **3 percent** more applications than were received in February 2025.

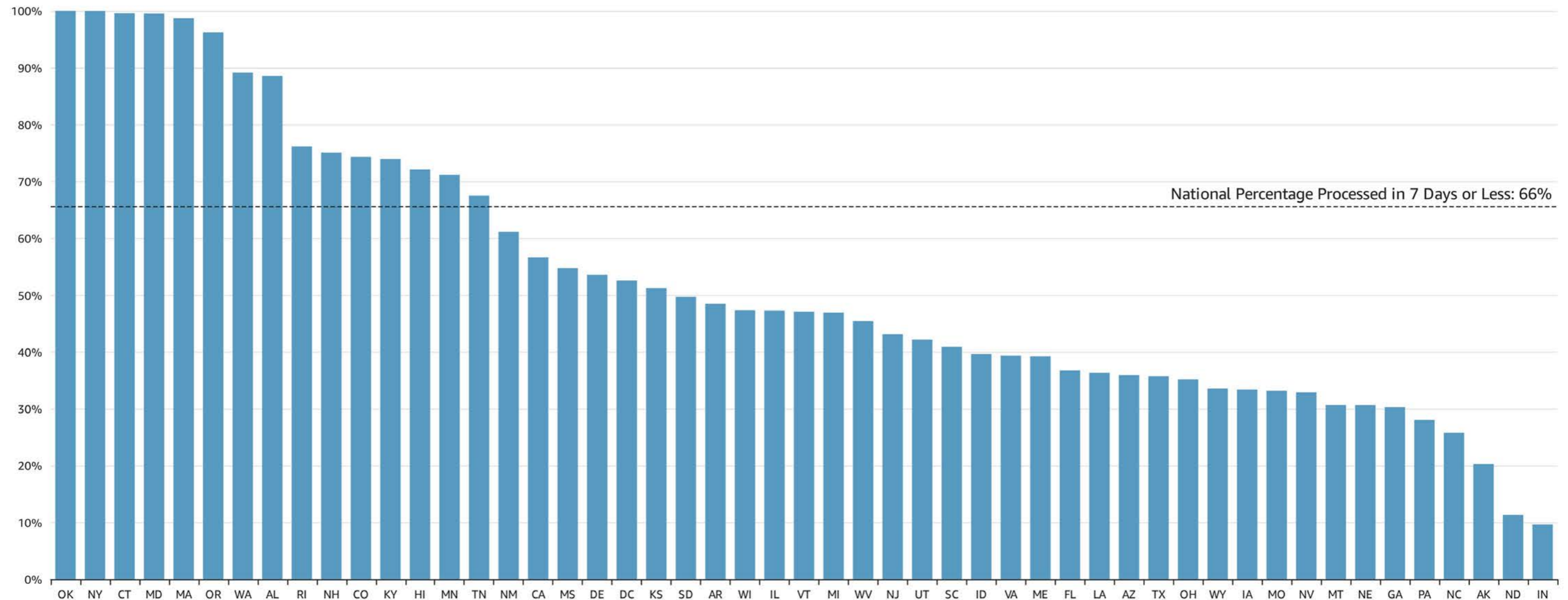


Source: Performance Indicator Data

Notes: The data displayed do not include applications transferred from the Federally Facilitated Marketplace to states, and thus do not capture the total number of applications states receive. Detailed notes on data, including if any states did not report data in certain months, can be found in the Appendix and on [Data.Medicaid.gov](https://www.data.medicaid.gov).

# February 2026: Percentage of MAGI Applications States Processed in 7 Days or Less

- In February 2026, nationally, **66 percent** of MAGI determinations at application were processed in 7 days or less. **15 states** were at or above this national percentage.

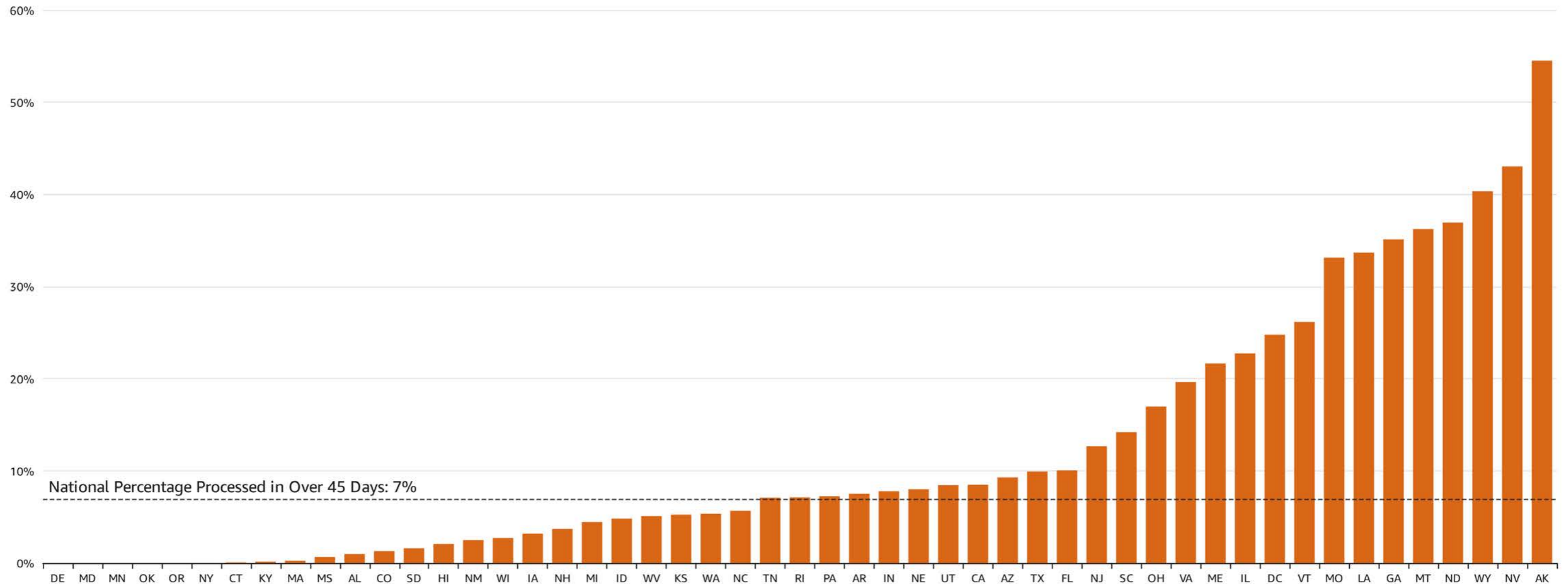


Source: Performance Indicator Data

Notes: Detailed notes on data, including if states are excluded, can be found in the Appendix and on [Data.Medicaid.gov](https://Data.Medicaid.gov).

# February 2026: Percentage of MAGI Applications States Processed in Over 45 Days

- In February 2026, nationally, **7 percent** of MAGI determinations at application were processed in over 45 days, the regulatory standard for determining eligibility on a basis other than disability, including MAGI-based determinations. **27 states** were at or above this national percentage.

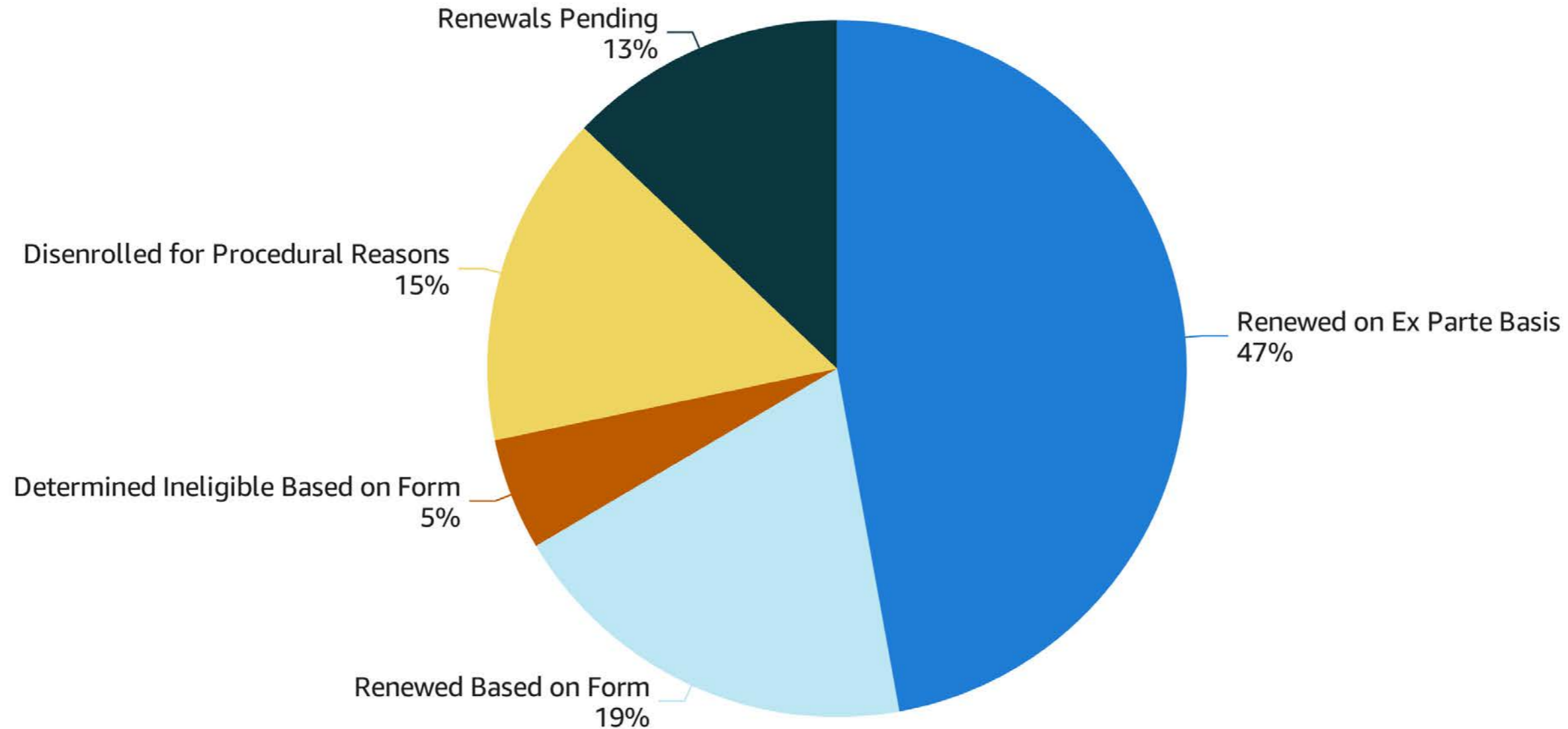


Source: Performance Indicator Data

Notes: Detailed notes on data, including if states are excluded, can be found in the Appendix and on [Data.Medicaid.gov](https://Data.Medicaid.gov).

# February 2026: Distribution of Renewal Outcomes

- In February 2026, of the **5.8 million individuals** due for renewal, **67 percent** had their coverage successfully renewed, **21 percent** were disenrolled, and **13 percent** had their renewals pending at the end of the month.



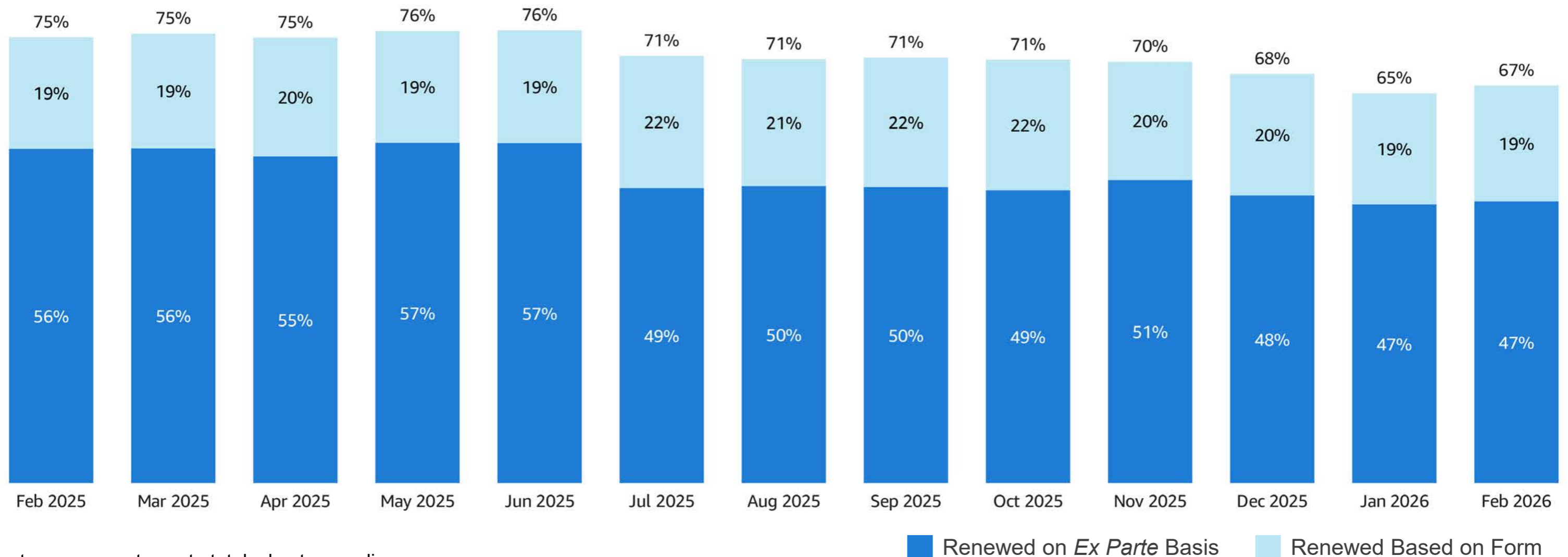
Percentages may not sum to totals due to rounding.

**Source:** Eligibility Processing Data

**Notes:** States may complete renewals pending in the month after the reporting month. Detailed notes on data can be found in the Appendix and on [Data.Medicaid.gov](https://Data.Medicaid.gov).

# February 2025 to February 2026: National Retention Rates at Renewal, by Renewal Type

- In February 2026, of the individuals due for renewal, **47 percent** were renewed on an *ex parte* basis and **19 percent** were renewed based on a form.
- Since April 2024, retention rates at renewal exceeded **64 percent** each month.



Percentages may not sum to totals due to rounding.

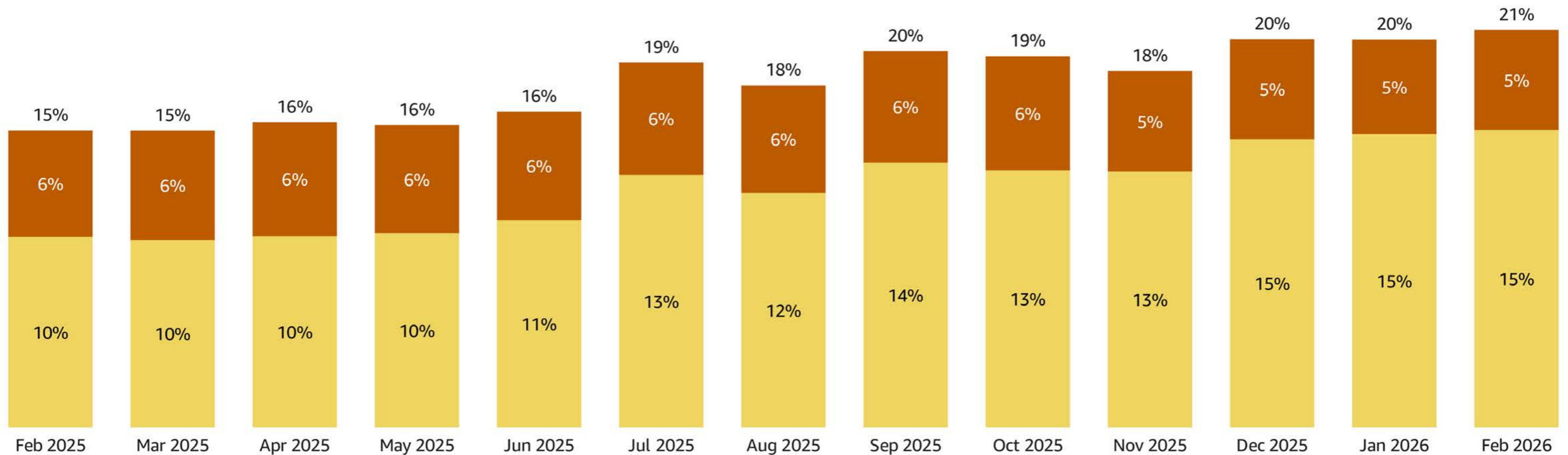
■ Renewed on *Ex Parte* Basis
 ■ Renewed Based on Form

**Source:** Eligibility Processing Data

**Notes:** Detailed notes on data, including if states are excluded, can be found in the Appendix and on [Data.Medicaid.gov](https://Data.Medicaid.gov).

# February 2025 to February 2026: National Disenrollment Rates at Renewal, by Disenrollment Type

- In February 2026, of the individuals due for renewal, **15 percent** were disenrolled for procedural reasons and **5 percent** were disenrolled based on a form.
- Since November 2023, procedural disenrollment rates have been less than or equal to **15 percent**.



■ Disenrolled for Procedural Reasons
 ■ Determined Ineligible Based on Form

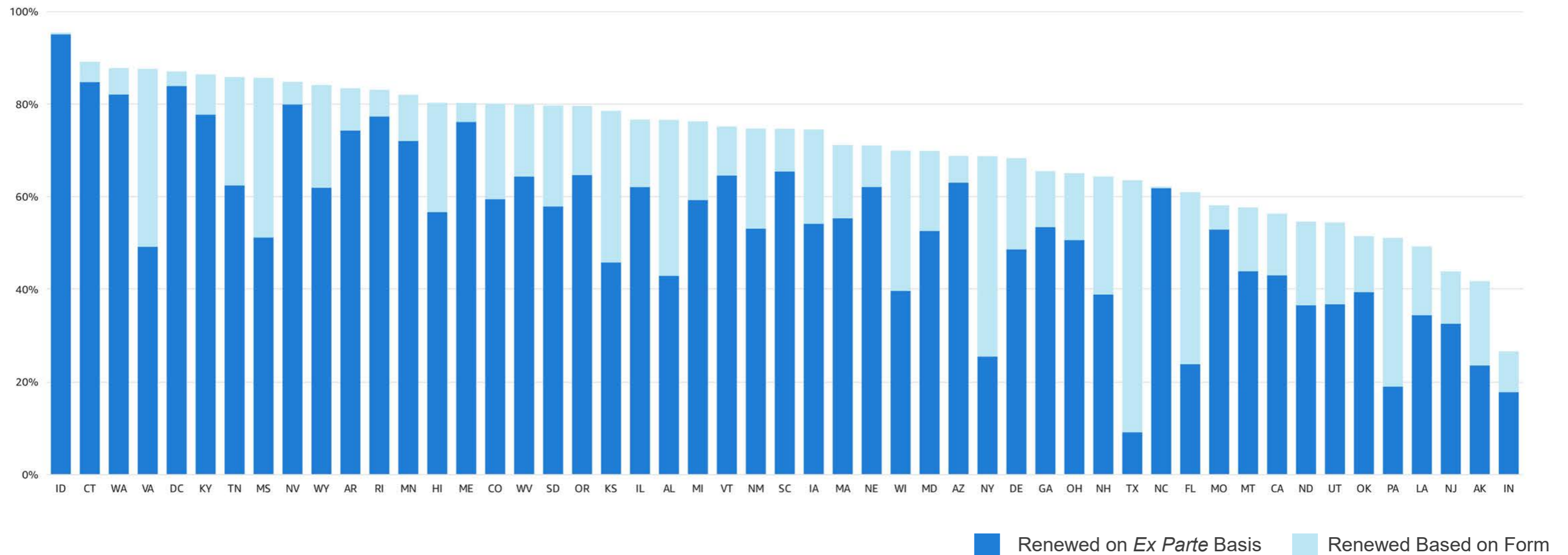
Percentages may not sum to totals due to rounding.

**Source:** Eligibility Processing Data

**Notes:** Detailed notes on data, including if states are excluded, can be found in the Appendix and on [Data.Medicaid.gov](https://Data.Medicaid.gov).

# February 2026: States' Coverage Retention Rates at Renewal, by Renewal Type

- In February 2026, states' coverage retention rates at renewal ranged from **27 to 95 percent** and *ex parte* rates ranged from **9 to 95 percent**.

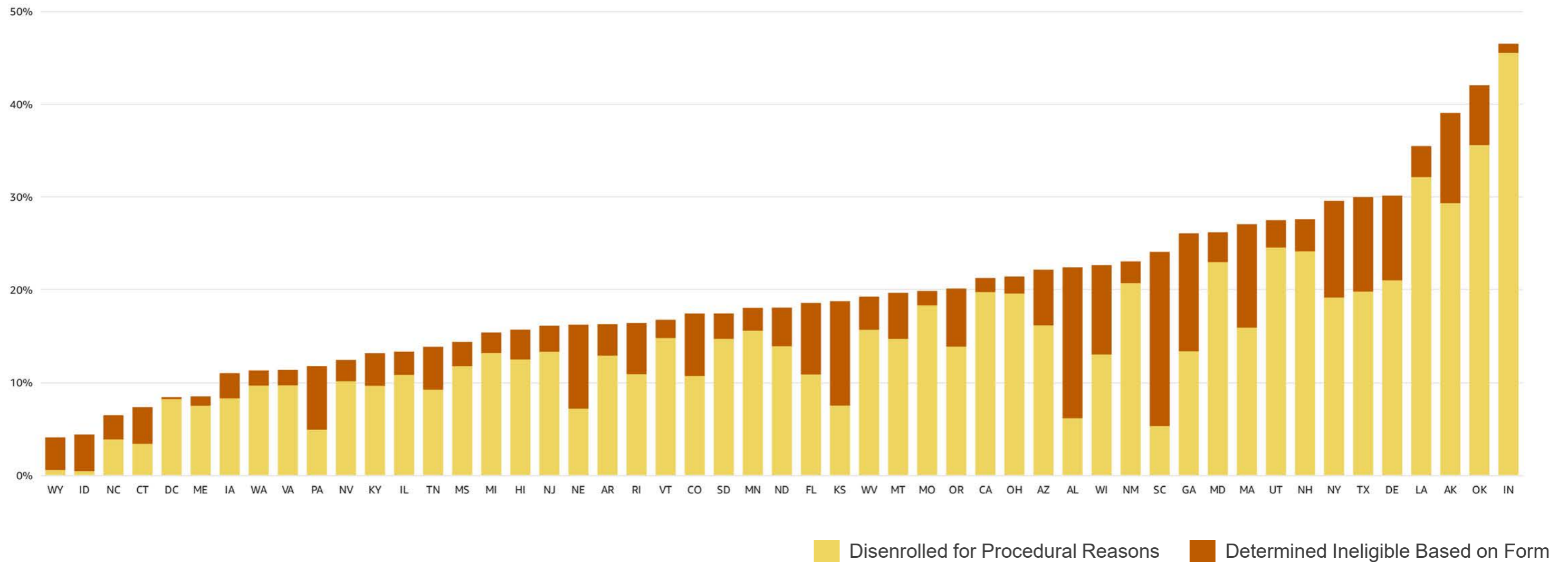


Source: Eligibility Processing Data

Notes: Detailed notes on data, including explanations for non-reporting, can be found in the Appendix and on [Data.Medicaid.gov](https://Data.Medicaid.gov).

# February 2026: States' Coverage Disenrollment Rates at Renewal, by Disenrollment Type

- In February 2026, states' rates of disenrollment at renewal ranged from **4 to 46 percent** and procedural disenrollment rates ranged from **less than 1 to 45 percent**.



Source: Eligibility Processing Data

Notes: Detailed notes on data, including explanations for non-reporting, can be found in the Appendix and on [Data.Medicaid.gov](https://Data.Medicaid.gov).

# State Data Tables

**Note:** The following rounding methodology was applied to all percent calculations featured in the state data tables: when the percent is greater than or equal to 0.5, then the value was rounded to the whole percentage point; when the percent is less than 0.05, then the value was rounded to one decimal point.

# February 2026: Medicaid and CHIP Enrollment by State

State	Total Medicaid and CHIP Enrollment		Medicaid Enrollment		CHIP Enrollment	
	Feb 2026	% Change Prior Month	Feb 2026	% Change Prior Month	Feb 2026	% Change Prior Month
AK	210,442	0.1%	197,587	0.1%	12,855	-0.1%
AL	936,918	0.1%	740,700	0.0%	196,218	1%
AR	798,482	-0.4%	715,111	-0.3%	83,371	-1%
AZ	1,639,141	-1%	1,527,741	-1%	111,400	-1%
CA	12,447,923	-1%	11,206,969	-1%	1,240,954	0.2%
CO	1,183,855	-0.4%	1,044,511	-0.4%	139,344	-1%
CT	903,159	-0.3%	877,669	-0.3%	25,490	-0.3%
DC	239,206	1%	223,016	1%	16,190	0.2%
DE	238,342	-0.4%	224,335	-0.4%	14,007	0.4%
FL	3,580,247	-0.2%	3,414,969	-0.3%	165,278	1%
GA	1,841,369	-1%	1,659,357	-1%	182,012	-1%
HI	387,233	-0.2%	361,658	-0.3%	25,575	1%
IA	670,025	1%	585,321	1%	84,704	-0.1%
ID	311,066	0.2%	291,471	0.2%	19,595	0.0%
IL	2,988,258	-0.2%	2,666,845	-0.2%	321,413	0.2%
IN	1,438,283	-1%	1,317,985	-1%	120,298	-2%
KS	396,574	-1%	324,334	-1%	72,240	-1%
KY	1,305,256	-1%	1,176,615	-1%	128,641	-4%
LA	1,367,435	-1%	1,231,040	-1%	136,395	-0.5%
MA	1,567,203	-0.5%	1,383,816	-0.2%	183,387	-3%
MD	1,388,290	-0.4%	1,192,846	-0.4%	195,444	-0.4%
ME	334,056	-0.3%	312,922	-0.3%	21,134	-1%
MI	2,194,454	-0.1%	2,027,525	-0.1%	166,929	-0.2%
MN	1,135,076	-0.4%	1,131,094	-0.4%	3,982	-3%
MO	1,242,164	-1%	1,107,774	-1%	134,390	0.1%
MS	587,137	-0.2%	503,605	-0.1%	83,532	-0.2%

Source: Performance Indicator Data

Notes: Detailed notes on data can be found in the Appendix and on [Data.Medicaid.gov](https://Data.Medicaid.gov).

# February 2026: Medicaid and CHIP Enrollment by State, cont.

State	Total Medicaid and CHIP Enrollment		Medicaid Enrollment		CHIP Enrollment	
	Feb 2026	% Change Prior Month	Feb 2026	% Change Prior Month	Feb 2026	% Change Prior Month
MT	208,151	-1%	188,346	-1%	19,805	0.1%
NC	2,849,341	-0.3%	2,503,652	-0.4%	345,689	0.4%
ND	103,737	0.1%	98,345	0.1%	5,392	-0.4%
NE	333,666	0.4%	296,393	0.5%	37,273	0.1%
NH	172,022	-1%	153,037	-1%	18,985	0.4%
NJ	1,739,068	0.2%	1,482,629	0.3%	256,439	-0.1%
NM	680,107	-0.2%	636,198	-0.2%	43,909	-0.2%
NV	727,300	-0.1%	680,222	-0.1%	47,078	-1%
NY	6,423,072	-1%	5,765,633	-1%	657,439	-0.3%
OH	2,681,863	-1%	2,439,802	-1%	242,061	-0.1%
OK	968,741	0.2%	890,835	-0.1%	77,906	4%
OR	1,288,913	-1%	1,106,086	-1%	182,827	-1%
PA	2,994,399	0.3%	2,715,845	0.4%	278,554	-0.1%
RI	286,204	-4%	251,044	-5%	35,160	3%
SC	967,113	-1%	853,622	-1%	113,491	0.1%
SD	137,536	1%	122,936	1%	14,600	1%
TN	1,401,142	-0.1%	1,223,332	0.1%	177,810	-2%
TX	3,997,752	-1%	3,651,928	-1%	345,824	0.3%
UT	326,311	0.1%	291,629	0.1%	34,682	0.0%
VA	1,660,787	-1%	1,469,914	-1%	190,873	-1%
VT	149,308	-1%	143,842	-1%	5,466	0.0%
WA	1,784,702	-0.1%	1,718,979	-0.2%	65,723	1%
WI	1,118,742	-0.1%	1,018,694	-0.1%	100,048	0.1%
WV	487,229	-0.2%	447,364	-0.3%	39,865	1%
WY	58,942	-1%	52,961	-1%	5,981	-1%
<b>Total</b>	<b>74,877,742</b>	<b>-1%</b>	<b>67,650,084</b>	<b>-1%</b>	<b>7,227,658</b>	<b>-0.2%</b>

Source: Performance Indicator Data

Notes: Detailed notes on data can be found in the Appendix and on [Data.Medicaid.gov](https://Data.Medicaid.gov).

# February 2026: Adult and Child Enrollment in Medicaid and CHIP by State

State	Medicaid Adult Enrollment		Medicaid Child and CHIP Enrollment		Medicaid Child Enrollment		CHIP Enrollment	
	Feb 2026	% Change Prior Month	Feb 2026	% Change Prior Month	Feb 2026	% Change Prior Month	Feb 2026	% Change Prior Month
AK	125,270	0.1%	85,172	0.2%	72,317	0.3%	12,855	-0.1%
AL	265,636	0.1%	671,282	0.1%	475,064	-0.1%	196,218	1%
AR	399,123	-1%	399,359	0.1%	315,988	0.4%	83,371	-1%
AZ	919,497	-2%	719,644	-1%	608,244	-1%	111,400	-1%
CA	7,889,816	-1%	4,558,107	-1%	3,317,153	-1%	1,240,954	0.2%
CO	659,429	-1%	524,426	0.0%	385,082	0.2%	139,344	-1%
CT	539,132	-0.3%	364,027	-0.3%	338,537	-0.3%	25,490	-0.3%
DC	145,498	1%	93,708	0.5%	77,518	1%	16,190	0.2%
DE	132,700	-0.3%	105,642	-0.4%	91,635	-1%	14,007	0.4%
FL	1,276,368	0.0%	2,303,879	-0.4%	2,138,601	-1%	165,278	1%
GA	545,600	-0.4%	1,295,769	-1%	1,113,757	-1%	182,012	-1%
HI	233,661	-0.4%	153,572	0.1%	127,997	0.0%	25,575	1%
IA	338,642	1%	331,383	1%	246,679	1%	84,704	-0.1%
ID	159,987	0.5%	151,079	-0.1%	131,484	-0.1%	19,595	0.0%
IL	1,642,847	-0.2%	1,345,411	-0.1%	1,023,998	-0.2%	321,413	0.2%
IN	754,725	-1%	683,558	-2%	563,260	-2%	120,298	-2%
KS	121,010	-1%	275,564	-1%	203,324	-0.5%	72,240	-1%
KY	718,768	-0.1%	586,488	-2%	457,847	-2%	128,641	-4%
LA	696,846	-2%	670,589	-1%	534,194	-1%	136,395	-0.5%
MA	891,561	0.0%	675,642	-1%	492,255	-0.5%	183,387	-3%
MD	724,090	-0.5%	664,200	-0.3%	468,756	-0.2%	195,444	-0.4%
ME	195,691	-0.5%	138,365	-0.1%	117,231	0.1%	21,134	-1%
MI	1,312,579	0.0%	881,875	-0.3%	714,946	-0.3%	166,929	-0.2%
MN	539,674	-1%	595,402	-0.3%	591,420	-0.2%	3,982	-3%
MO	677,501	-0.3%	564,663	-1%	430,273	-1%	134,390	0.1%
MS	195,175	-0.1%	391,962	-0.2%	308,430	-0.2%	83,532	-0.2%

Source: Performance Indicator Data

Notes: Detailed notes on data can be found in the Appendix and on [Data.Medicaid.gov](https://Data.Medicaid.gov).

# February 2026: Adult and Child Enrollment in Medicaid and CHIP by State, cont.

State	Medicaid Adult Enrollment		Medicaid Child and CHIP Enrollment		Medicaid Child Enrollment		CHIP Enrollment	
	Feb 2026	% Change Prior Month	Feb 2026	% Change Prior Month	Feb 2026	% Change Prior Month	Feb 2026	% Change Prior Month
MT	118,896	-1%	89,255	-0.2%	69,450	-0.3%	19,805	0.1%
NC	1,447,256	0.2%	1,402,085	-1%	1,056,396	-1%	345,689	0.4%
ND	53,039	0.2%	50,698	-0.1%	45,306	0.0%	5,392	-0.4%
NE	162,355	1%	171,311	0.3%	134,038	0.3%	37,273	0.1%
NH	86,841	-1%	85,181	-0.5%	66,196	-1%	18,985	0.4%
NJ	937,738	0.4%	801,330	0.0%	544,891	0.1%	256,439	-0.1%
NM	372,788	-0.3%	307,319	-0.2%	263,410	-0.2%	43,909	-0.2%
NV	412,490	0.1%	314,810	-0.4%	267,732	-0.3%	47,078	-1%
NY	3,989,467	-1%	2,433,605	-1%	1,776,166	-1%	657,439	-0.3%
OH	1,528,482	-0.5%	1,153,381	-1%	911,320	-1%	242,061	-0.1%
OK	467,784	1%	500,957	-0.4%	423,051	-1%	77,906	4%
OR	819,381	-1%	469,532	-0.2%	286,705	0.0%	182,827	-1%
PA	1,588,735	0.4%	1,405,664	0.2%	1,127,110	0.3%	278,554	-0.1%
RI	172,939	-4%	113,265	-4%	78,105	-8%	35,160	3%
SC	367,361	-1%	599,752	-1%	486,261	-1%	113,491	0.1%
SD	60,957	1%	76,579	0.2%	61,979	-0.1%	14,600	1%
TN	572,510	-0.1%	828,632	-0.1%	650,822	0.3%	177,810	-2%
TX	958,807	-1%	3,038,945	-1%	2,693,121	-1%	345,824	0.3%
UT	162,492	1%	163,819	-0.4%	129,137	-1%	34,682	0.0%
VA	867,726	-1%	793,061	-1%	602,188	-0.5%	190,873	-1%
VT	92,059	-1%	57,249	-0.2%	51,783	-0.2%	5,466	0.0%
WA	968,388	-0.1%	816,314	-0.2%	750,591	-0.2%	65,723	1%
WI	582,439	-0.1%	536,303	0.0%	436,255	0.0%	100,048	0.1%
WV	293,266	-0.3%	193,963	-0.1%	154,098	-0.3%	39,865	1%
WY	18,942	-1%	40,000	-2%	34,019	-2%	5,981	-1%
<b>Total</b>	<b>39,203,964</b>	<b>-1%</b>	<b>35,673,778</b>	<b>-1%</b>	<b>28,446,120</b>	<b>-1%</b>	<b>7,227,658</b>	<b>-0.2%</b>

Source: Performance Indicator Data

Notes: Detailed notes on data can be found in the Appendix and on [Data.Medicaid.gov](https://Data.Medicaid.gov).

# February 2026: MAGI Application Processing Times by State

State	Percent Processed in				
	Less Than 24 Hours	1-7 Days	8-30 Days	31-45 Days	Over 45 Days
AK	3%	18%	13%	12%	55%
AL	78%	10%	7%	3%	1%
AR	11%	37%	37%	7%	8%
AZ	30%	6%	31%	23%	9%
CA	42%	15%	25%	10%	8%
CO	44%	30%	20%	5%	1%
CT	99%	1%	0.3%	0.0%	0.1%
DC	34%	19%	16%	7%	25%
DE	3%	51%	12%	34%	0.0%
FL	26%	11%	37%	17%	10%
GA	10%	20%	21%	14%	35%
HI	56%	16%	24%	2%	2%
IA	17%	16%	53%	10%	3%
ID	34%	6%	44%	11%	5%
IL	30%	18%	21%	9%	23%
IN	1%	9%	53%	29%	8%
KS	16%	35%	41%	3%	5%
KY	64%	10%	25%	1%	0.1%
LA	28%	9%	19%	11%	34%
MA	94%	5%	1%	0.1%	0.2%
MD	96%	3%	0.4%	0.1%	0.0%
ME	28%	11%	31%	8%	22%
MI	29%	18%	27%	21%	4%
MN	50%	21%	29%	0.0%	0.0%
MO	14%	19%	10%	23%	33%
MS	29%	26%	42%	3%	1%

Source: Performance Indicator Data

Notes: Detailed notes on data can be found in the Appendix and on [Data.Medicaid.gov](https://Data.Medicaid.gov).

# February 2026: MAGI Application Processing Times by State, cont.

State	Percent Processed in				
	Less Than 24 Hours	1-7 Days	8-30 Days	31-45 Days	Over 45 Days
MT	11%	20%	21%	13%	36%
NC	5%	21%	26%	43%	6%
ND	2%	10%	20%	32%	37%
NE	9%	21%	44%	17%	8%
NH	36%	39%	19%	2%	4%
NJ	19%	24%	31%	13%	13%
NM	39%	22%	19%	17%	2%
NV	23%	10%	18%	6%	43%
NY	100%	0.0%	0.0%	0.0%	0.0%
OH	13%	23%	37%	11%	17%
OK	100%	0.0%	0.0%	0.0%	0.0%
OR	83%	13%	4%	0.0%	0.0%
PA	9%	19%	52%	13%	7%
RI	62%	14%	11%	6%	7%
SC	7%	34%	37%	8%	14%
SD	40%	9%	27%	22%	2%
TN	56%	11%	17%	8%	7%
TX	13%	23%	27%	28%	10%
UT	26%	16%	39%	11%	8%
VA	22%	17%	18%	23%	20%
VT	32%	16%	18%	9%	26%
WA	83%	6%	4%	1%	5%
WI	29%	19%	36%	14%	3%
WV	21%	25%	38%	11%	5%
WY	22%	12%	18%	8%	40%
<b>Total</b>	<b>55%</b>	<b>10%</b>	<b>18%</b>	<b>9%</b>	<b>7%</b>

Source: Performance Indicator Data

Notes: Detailed notes on data can be found in the Appendix and on [Data.Medicaid.gov](https://Data.Medicaid.gov).

# February 2026: Coverage Retention and Disenrollment Rates by State

State	Total Number Due for Renewal in the Reporting Month	Percent of the Total Number Due for Renewal in Reporting Month				
		(1) Total Renewed in Medicaid/CHIP	(2) Total Disenrolled from Medicaid/CHIP	(3) Total Pending	(1a) Renewed on an <i>Ex Parte</i> Basis	(2a) Disenrolled for a Procedural or Administrative Reason
AK	20,000	42%	39%	19%	23%	29%
AL	105,413	76%	22%	1%	43%	6%
AR	48,463	83%	16%	0.4%	74%	13%
AZ	113,696	69%	22%	9%	63%	16%
CA	1,003,079	56%	21%	22%	43%	20%
CO	89,314	80%	17%	3%	59%	11%
CT	100,412	89%	7%	4%	85%	3%
DC	18,682	87%	8%	5%	84%	8%
DE	19,732	68%	30%	2%	49%	21%
FL	197,339	61%	19%	21%	24%	11%
GA	207,977	65%	26%	9%	53%	13%
HI	18,463	80%	16%	4%	57%	12%
IA	56,221	74%	11%	15%	54%	8%
ID	11,646	95%	4%	0.2%	95%	0.4%
IL	216,487	77%	13%	10%	62%	11%
IN	115,539	27%	46%	27%	18%	45%
KS	25,992	78%	19%	3%	46%	7%
KY	139,700	86%	13%	1%	78%	10%
LA	143,411	49%	35%	15%	34%	32%
MA	150,458	71%	27%	2%	55%	16%
MD	89,169	70%	26%	4%	53%	23%
ME	32,801	80%	8%	11%	76%	7%
MI	193,979	76%	15%	9%	59%	13%
MN	97,846	82%	18%	0.0%	72%	16%
MO	102,702	58%	20%	22%	53%	18%
MS	43,843	86%	14%	0.0%	51%	12%

**Source:** Eligibility Processing Data  
**Notes:** Total Renewed, Total Disenrolled and Total Pending equals 100 percent of renewals due. Renewed on an *Ex Parte* Basis is a subset of Total Renewed, and Disenrolled for a Procedural Reason is a subset of Total Disenrolled. Detailed notes on data can be found in the Appendix and on [Data.Medicaid.gov](https://www.data.medicaid.gov).

# February 2026: Coverage Retention and Disenrollment Rates by State, cont.

State	Total Number Due for Renewal in the Reporting Month	Percent of the Total Number Due for Renewal in Reporting Month				
		(1) Total Renewed in Medicaid/CHIP	(2) Total Disenrolled from Medicaid/CHIP	(3) Total Pending	(1a) Renewed on an <i>Ex Parte</i> Basis	(2a) Disenrolled for a Procedural or Administrative Reason
MT	16,021	58%	20%	23%	44%	15%
NC	280,835	62%	6%	31%	62%	4%
ND	8,417	55%	18%	27%	37%	14%
NE	24,733	71%	16%	13%	62%	7%
NH	10,859	64%	28%	8%	39%	24%
NJ	103,151	44%	16%	40%	32%	13%
NM	36,332	75%	23%	2%	53%	21%
NV	65,012	85%	12%	3%	80%	10%
NY	422,146	69%	30%	2%	25%	19%
OH	244,840	65%	21%	14%	51%	20%
OK	63,713	51%	42%	7%	39%	36%
OR	78,941	80%	20%	0.3%	65%	14%
PA	219,691	51%	12%	37%	19%	5%
RI	14,531	83%	16%	1%	77%	11%
SC	96,863	75%	24%	1%	65%	5%
SD	11,446	80%	17%	3%	58%	15%
TN	58,509	86%	14%	0.4%	62%	9%
TX	280,915	63%	30%	7%	9%	20%
UT	30,644	54%	27%	18%	37%	25%
VA	123,615	88%	11%	1%	49%	10%
VT	13,605	75%	17%	8%	64%	15%
WA	119,005	88%	11%	1%	82%	10%
WI	74,223	70%	23%	8%	40%	13%
WV	34,449	80%	19%	1%	64%	16%
WY	4,572	84%	4%	12%	62%	1%
<b>Total</b>	<b>5,799,432</b>	<b>67%</b>	<b>21%</b>	<b>13%</b>	<b>47%</b>	<b>15%</b>

Source: Eligibility Processing Data

Notes: Total Renewed, Total Disenrolled and Total Pending equals 100 percent of renewals due. Renewed on an *Ex Parte* Basis is a subset of Total Renewed, and Disenrolled for a Procedural Reason is a subset of Total Disenrolled. Detailed notes on data can be found in the Appendix and on [Data.Medicaid.gov](https://www.data.medicaid.gov).

# February 2026: Call Center Volumes, Wait Times and Abandonment Rates by State

State	Volume		Wait Time (Minutes)		Abandonment Rate	
	Feb 2026	% Change Prior Month	Feb 2026	% Change Prior Month	Feb 2026	Change Prior Month
AK	30,082	-9%	9	-36%	12%	-4%
AL	45,781	-13%	1	-50%	5%	-4%
AR	189,583	-1%	17	6%	3%	-6%
AZ	52,189	-10%	7	0.0%	15%	-1%
CA	1,776,787	-40%	43	13%	3%	-26%
CO	30,742	-8%	13	-13%	11%	6%
CT	135,226	-11%	1	-50%	11%	4%
DC	39,728	-12%	2	100%	1%	-3%
DE	27,851	-5%	2	0.0%	31%	0.0%
FL	2,178,582	-10%	39	0.0%	27%	0.3%
GA	28,041	-1%	58	7%	1%	0.1%
HI	25,086	-24%	119	-70%	31%	-11%
IA	21,074	-13%	1	0.0%	2%	-1%
ID	72,228	21%	78	100%	3%	0.1%
IL	238,958	-5%	25	-4%	28%	1%
IN	256,874	-11%	11	-31%	14%	-7%
KS	32,022	5%	0	0.0%	0.3%	0.0%
KY	90,803	-11%	1	0.0%	2%	2%
LA	401,111	-7%	5	0.0%	4%	0.2%
MA	253,674	-15%	6	-14%	10%	-3%
MD	61,647	-21%	2	-50%	5%	-5%
ME	35,589	-24%	12	-20%	24%	-2%
MI	149,573	-12%	1	0.0%	2%	0.2%
MN	25,034	-6%	23	-8%	47%	5%
MO	69,022	-9%	16	7%	18%	1%
MS	7,369	3%	0	0.0%	6%	-8%

Source: Performance Indicator Data

Notes: Detailed notes on data can be found in the Appendix and on [Data.Medicaid.gov](https://Data.Medicaid.gov).

# February 2026: Call Center Volumes, Wait Times and Abandonment Rates by State, cont.

State	Volume		Wait Time (Minutes)		Abandonment Rate	
	Feb 2026	% Change Prior Month	Feb 2026	% Change Prior Month	Feb 2026	Change Prior Month
MT	25,191	-8%	27	4%	44%	1%
NC	21,253	-10%	0	0.0%	1%	-0.3%
ND	28,242	-9%	17	0.0%	44%	-2%
NE	20,825	-16%	9	0.0%	15%	-1%
NH	37,533	-18%	8	14%	4%	-2%
NJ	151,472	-15%	4	0.0%	23%	-9%
NM	132,500	-11%	8	-20%	4%	-2%
NV	91,658	-28%	58	-17%	30%	3%
NY	751,296	0.0%	4	0.0%	5%	1%
OH	188,341	-15%	3	-25%	5%	0.0%
OK	173,264	-7%	86	16%	17%	2%
OR	143,338	-18%	13	-13%	31%	-6%
PA	284,039	-14%	24	-14%	36%	-7%
RI	19,954	-32%	8	-38%	12%	-11%
SC	130,525	-24%	3	-57%	4%	-8%
SD	NR	NR	NR	NR	NR	NR
TN	72,003	3%	0	0.0%	1%	0.4%
TX	860,220	-1%	6	50%	9%	1%
UT	105,334	-13%	17	-26%	18%	-3%
VA	72,880	1%	1	100%	7%	1%
VT	20,279	-26%	2	0.0%	5%	1%
WA	61,028	-5%	1	0.0%	24%	0.0%
WI	252,053	-12%	18	-5%	18%	-3%
WV	28,570	4%	4	0.0%	11%	2%
WY	13,842	-6%	1	0.0%	4%	1%

Source: Performance Indicator Data

Notes: NR = Not reported. SD does not have call centers. Detailed notes on data can be found in the Appendix and on [Data.Medicaid.gov](https://Data.Medicaid.gov).

# Appendix

# Data Notes

Data Type	Data Notes
Medicaid and CHIP Enrollment Data	<ul style="list-style-type: none"> <li>Arizona did not report adult and child Medicaid breakouts from February 2020 to April 2024. Prior to May 2024, the national Medicaid child and CHIP enrollment totals include Arizona's CHIP enrollment only, and the national Medicaid adult enrollment totals exclude Arizona's Medicaid adult enrollment.</li> <li>California revised its Medicaid enrollment reporting in November 2025 to accurately exclude limited benefit individuals. California has not revised its Medicaid enrollment counts from prior months, so its Medicaid enrollment data for November 2025 and forward are not directly comparable to data from previous months.</li> </ul>
Applications Received Data	<ul style="list-style-type: none"> <li>New York made additional changes to its reporting methodology for Medicaid and CHIP applications beginning in July 2024 to correctly include additional applications required under CMS's reporting specifications.</li> <li>Rhode Island was unable to report applications received data for December 2024 and January 2025.</li> <li>Data reported may be an undercount because a state may not include all applications received or may not include applications for some populations or limited benefit programs.</li> <li>Data reported may be an overcount because a state may include duplicate applications, accounts transferred from HealthCare.gov, administrative data transfers or renewals/redeterminations.</li> </ul>
MAGI Application Processing Time Data	<ul style="list-style-type: none"> <li>Counts may not include all MAGI determinations on applications.</li> <li>Counts may include redeterminations or some non-MAGI applications in the data.</li> <li>Counts may report processing time at the application/household level and not at the individual level.</li> </ul>
Call Center Data	<ul style="list-style-type: none"> <li>South Dakota does not have a call center and does not report call center metrics.</li> <li>California started reporting complete data from all its call centers in January 2026.</li> </ul>

## Data Notes (Continued)

Data Type	Detailed Data Notes
Marketplace Enrollment Data	<ul style="list-style-type: none"> <li>As of the January 2026 data, Marketplace enrollment data are no longer included in this report but will be available separately soon.</li> </ul>
BHP/Other Data	<ul style="list-style-type: none"> <li>BHP enrollment includes data reported to CMS by the District of Columbia, Minnesota, New York, and Oregon.</li> <li>As of the March 2024 data, New York reports enrollment in the Essential Plan Expansion (EP) Program, which is a coverage program implemented under a section 1332 waiver.</li> <li>As of the July 2024 data, Oregon began reporting BHP enrollment data after implementing its BHP program in the same month.</li> <li>As of the January 2026 data, the District of Columbia began reporting BHP enrollment data after implementing its BHP program in the same month.</li> </ul>
Eligibility Processing Data	<ul style="list-style-type: none"> <li>Georgia reported data for individuals who continue to be eligible following a change in circumstances and were granted a new 12-month eligibility period during the reporting period, along with data on individuals due for renewal in the month.</li> <li>North Carolina reports renewal outcomes for only initiated renewals scheduled for completion in the report month, and as such, the data do not reflect renewals that should have been completed in the reporting period that the state was unable to initiate by the end of the report month.</li> <li>In most states, the effective date for procedural terminations is the beginning of the following month in which the renewal was due (e.g., procedural terminations for renewals due and reported in the month of March would have an effective termination date of April 1).</li> </ul>

## Data Sources by Slide

Data Sources	Slide Title
Medicaid and CHIP Eligibility and Enrollment Performance Indicator Data, preliminary data	<ul style="list-style-type: none"> <li>• Total Medicaid and CHIP Enrollment</li> <li>• Total Monthly Medicaid and CHIP Enrollment</li> <li>• Total Monthly Medicaid Child and CHIP Enrollment and Medicaid Adult Enrollment</li> <li>• Applications for Medicaid and CHIP Received by States</li> <li>• Percentage of MAGI Applications States Processed in 7 Days or Less</li> <li>• Percentage of MAGI Applications States Processed in Over 45 Days</li> </ul>
Medicaid and CHIP Eligibility Processing Data	<ul style="list-style-type: none"> <li>• Distribution of Renewal Outcomes</li> <li>• National Retention Rates at Renewal, by Renewal Type</li> <li>• National Disenrollment Rates at Renewal, by Disenrollment Type</li> <li>• States' Coverage Retention Rates at Renewal, by Renewal Type</li> <li>• States' Coverage Disenrollment Rates at Renewal, by Disenrollment Type</li> </ul>