



Released
August 2021

2020 Medicaid & CHIP Beneficiaries at a Glance



KEY FACTS

80,543,351

Medicaid and CHIP Enrollment,
January 2021¹

11,151,485

* People Dually Eligible for Medicare
and Medicaid, June 2020¹

18,740,932

** Medicaid Expansion Adult
Enrollment, December 2020¹

\$633 Billion

*** Total Medicaid and CHIP
Expenditures, 2019¹

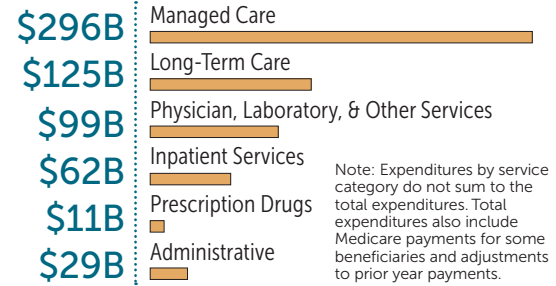
42%

U.S. Births Covered by
Medicaid, 2019²

69%

**** Medicaid Beneficiaries Enrolled in
Comprehensive Managed Care, 2018¹

Annual Medicaid and CHIP Expenditure by Service Category, 2018¹



* People dually eligible for Medicare and Medicaid are also called dually eligible beneficiaries. This number includes beneficiaries with full (7,888,961) and partial (3,249,121) Medicaid benefits. The total, national number of all dually eligible beneficiaries does not equal the sum of the number of full benefit and partial benefit beneficiaries. The national total includes values that have been suppressed at the county-level for privacy reasons, and cannot be broken out by full or partial benefit status.

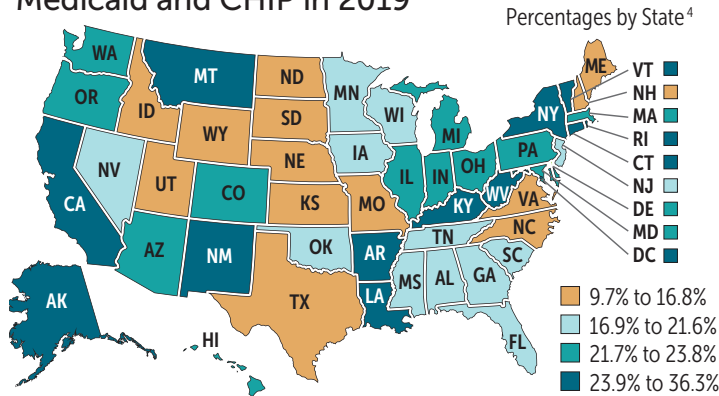
** Expansion adults = Adults made newly eligible for Medicaid under the Affordable Care Act beginning in 2014.

*** Includes federal, state, and local expenditures.

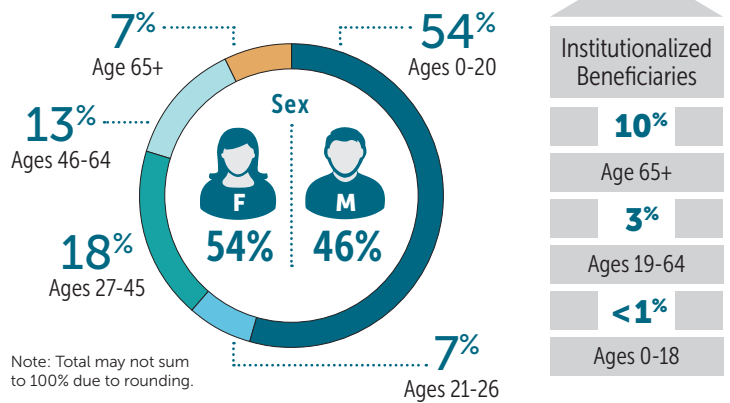
**** Includes the 50 states and DC and excludes all territories.

BENEFICIARY CHARACTERISTICS

17% of the U.S. Population Were Enrolled in Medicaid and CHIP in 2019³

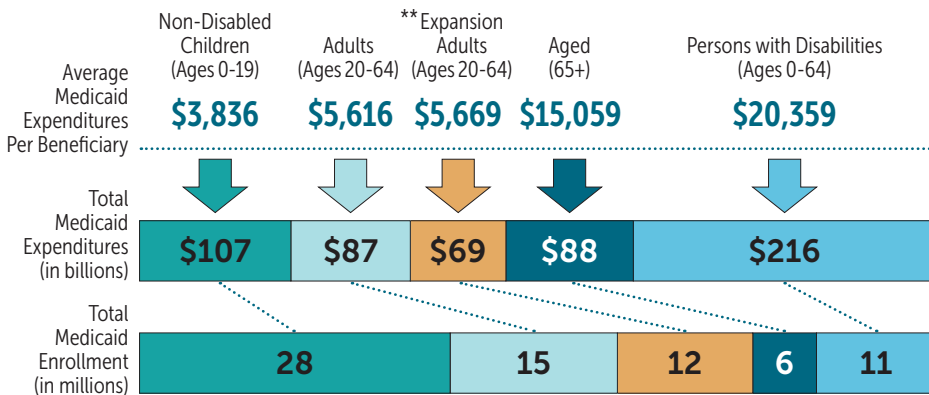


Beneficiaries by Age,¹ Sex,¹ and Institutionalized Status,³ 2018 & 2019



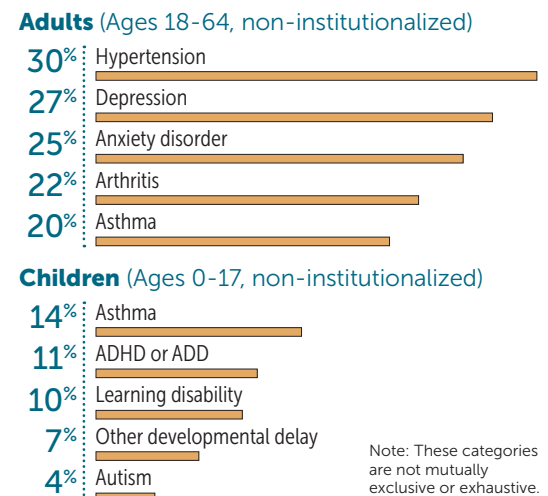
BENEFICIARY CATEGORIES AND HEALTH CONDITIONS

Medicaid Average Cost, Enrollment, and Expenditures, by Beneficiary Category, 2017¹



Note: Children and adults with disabilities as their basis for eligibility are included in the category of persons with disabilities.
** Expansion adults = Adults made newly eligible for Medicaid under the Affordable Care Act beginning in 2014.

Beneficiaries' Self-Reported Health Conditions, 2019⁵



If you would like more information about the Medicaid and CHIP programs and their beneficiaries, please see the following additional resources:

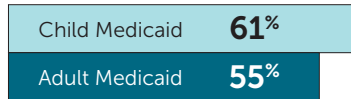
- The **2020 Medicaid and CHIP Beneficiary Profile** provides an overview of the characteristics, health status, access, utilization, expenditures, and experience of the beneficiaries served by Medicaid and CHIP. It is available at: <https://www.medicare.gov/medicaid/quality-of-care/index.html>
- CMS developed the **Medicaid and CHIP Scorecard** to increase public transparency and accountability about the programs' administration and outcomes. It is available at: <https://www.medicare.gov/state-overviews/scorecard/index.html>

Getting Needed Care, 2020⁶



Percentage of Survey Respondents Who Selected 'Always'

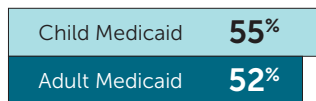
Getting Needed Care Composite



Easy to get necessary care, tests, or treatment



Got appointment with specialists as soon as needed



Note: "Getting Needed Care Composite" combines responses of the two other questions in this section, which are shown below it.

DUALLY ELIGIBLE BENEFICIARIES

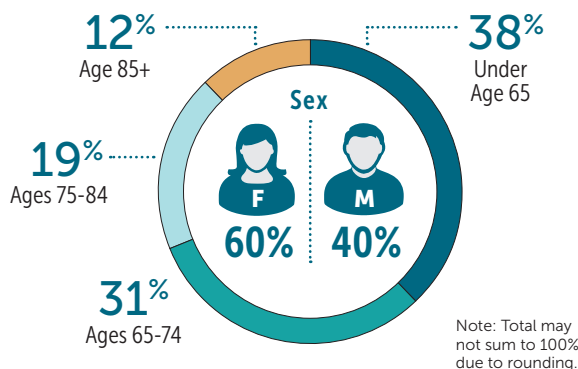


Fast fact: Dually eligible individuals are enrolled in Medicare and Medicaid. About 71% (7,888,961) receive full benefits, and the remaining 29% (3,249,121) receive partial benefits. Full-benefit dually eligible individuals are Medicare beneficiaries who qualify for the full package of Medicaid benefits. They often separately qualify for assistance with Medicare premiums and cost sharing through the Medicare Savings Programs (MSPs). Partial-benefit dually eligible individuals are enrolled only in Medicare and an MSP. The exhibits below include only those beneficiaries with full Medicaid benefits.

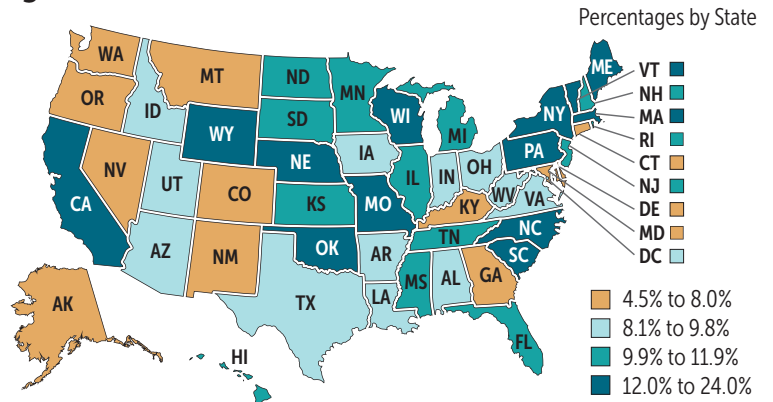
beneficiaries who qualify for the full package of Medicaid benefits. They often separately qualify for assistance with Medicare premiums and cost sharing through the Medicare Savings Programs (MSPs). Partial-benefit dually eligible individuals are enrolled only in Medicare and an MSP. The exhibits below include only those beneficiaries with full Medicaid benefits.

Note: The total, national number of all dually eligible beneficiaries does not equal the sum of the number of full benefit and partial benefit beneficiaries. The national total includes values that have been suppressed at the county-level for privacy reasons, and cannot be broken out by full or partial benefit status.

Demographic Characteristics of Dually Eligible Beneficiaries, 2019¹



Percentage of Medicaid Beneficiaries who are Dually Eligible for Medicare and Medicaid, 2020¹



DATA SOURCES

1. Based on Centers for Medicare & Medicaid Services (CMS) administrative data.
2. Based on National Center for Health Statistics data.
3. Based on U.S. Census data.
4. Based on CMS administrative data and U.S. Census data.
5. Based on Mathematica analysis of National Health Interview Survey data.
6. Based on Agency for Healthcare Research and Quality analysis of Consumer Assessment of Healthcare Providers and Systems (CAHPS) Health Plan Survey data.

Suggested Citation: Center for Medicaid and CHIP Services, Division of Quality and Health Outcomes. **2020 Medicaid and CHIP Beneficiaries at a Glance.** Centers for Medicare & Medicaid Services. Baltimore, MD. Released August 2021.

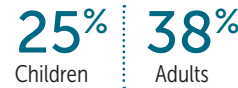
Self-Reported Health Care Utilization Among Non-Institutionalized Children and Adults Covered by Medicaid or CHIP, 2019⁵



Had at least 1 visit to a doctor or other health professional



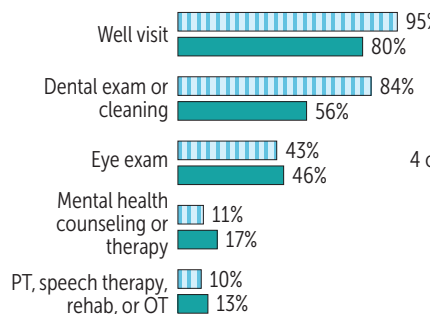
Had at least 1 emergency department visit



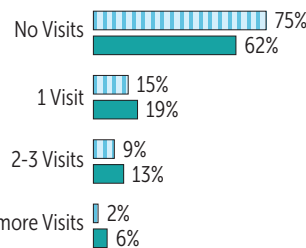
Had at least 1 overnight hospital stay



Percentage of Beneficiaries with at Least 1 Visit in the Past 12 Months, by Type of Visit



Number of Visits



KEY: Children (light blue), Adults (dark blue)



Received care at home



Note: Data include all non-institutionalized children ages 0 to 17, and non-institutionalized adults ages 18 to 64 covered by Medicaid, CHIP, or other state-sponsored health plans.