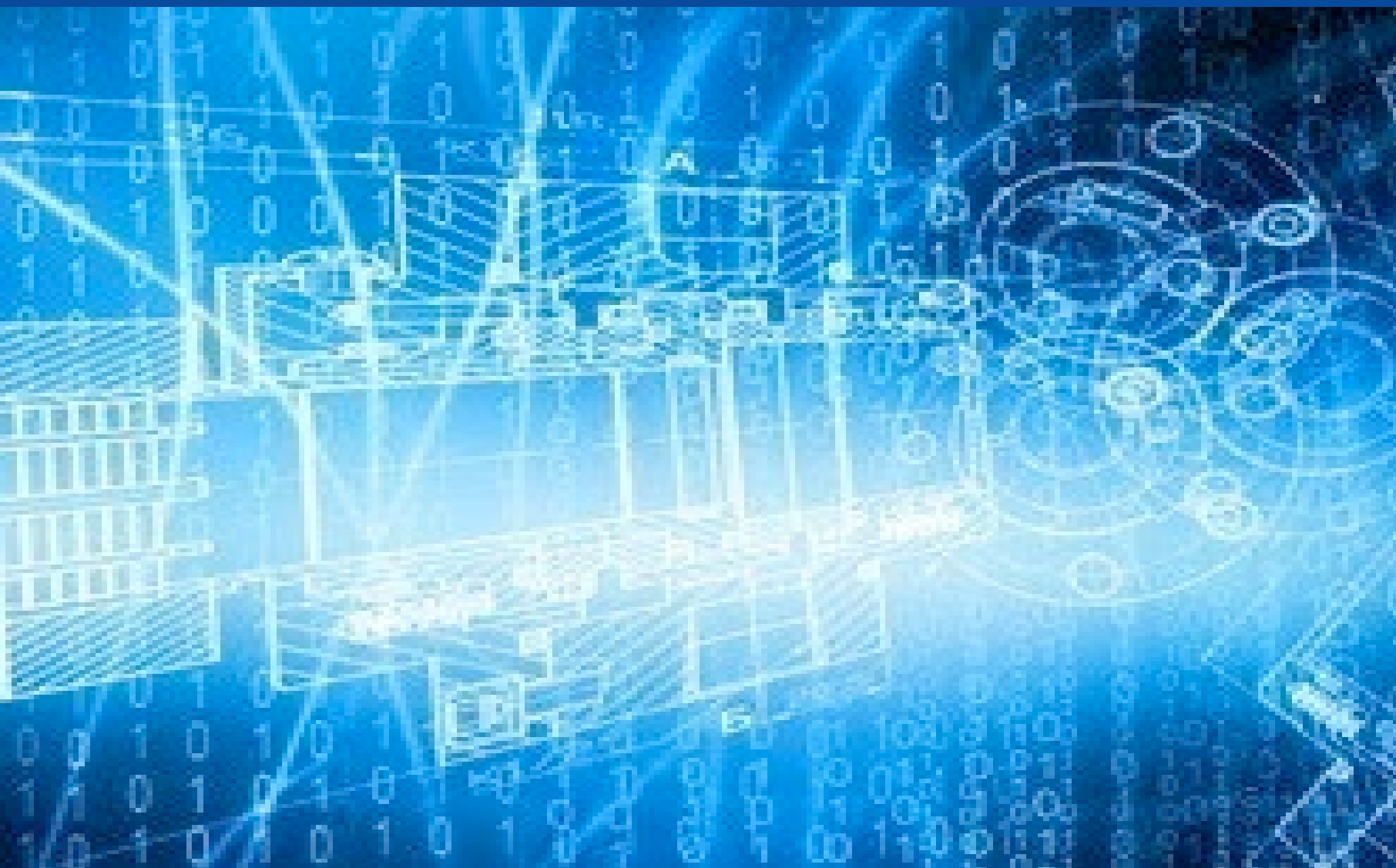


# May 2023 Medicaid and CHIP Enrollment Trends Snapshot



*Center for Medicaid  
and CHIP Services*

# Enrollment Snapshot

- To monitor states' progress after the end of the Medicaid continuous enrollment condition and states' return to regular eligibility operations, including conducting full renewals, this Enrollment Snapshot captures high level information on the most recently submitted month of Performance Indicator Enrollment Data<sup>1</sup> within the context of trends prior to the COVID-19 public health emergency (PHE), as well as trends prior to the end of the Medicaid continuous enrollment condition,<sup>2,3</sup> focusing on:
  - Total Medicaid and CHIP enrollment;
  - Medicaid enrollment;
  - CHIP enrollment;
  - Adult enrollment; and
  - Child enrollment.
- This analysis also captures high level information on the trend in the number of Medicaid and CHIP applications received by states.

<sup>1</sup> Performance Indicator Enrollment Data counts individuals receiving full-scope and comprehensive Medicaid and CHIP benefits.

<sup>2</sup> February 2020 serves as the baseline prior to the impacts of the COVID-19 pandemic and the enactment of the Families First Coronavirus Response Act (FFCRA) in March 2020. March 2023 serves as the baseline before states began disenrolling individuals from Medicaid coverage after the end of the Medicaid continuous enrollment condition. For more information, please visit <https://www.medicaid.gov/resources-for-states/coronavirus-disease-2019-covid-19/unwinding-and-returning-regular-operations-after-covid-19/index.html>.

<sup>3</sup> Section 6008 of FFCRA included a Medicaid continuous enrollment condition through March 31, 2023, and states that complied received a temporary federal medical assistance percentage (FMAP) increase.

# Key Findings

- In May 2023, **93,815,749** individuals were enrolled in Medicaid and CHIP.<sup>1</sup>
  - **86,783,676** individuals were enrolled in Medicaid in May 2023, a decrease of **279,373** individuals (0.3%) from April 2023.
  - **7,032,073** individuals were enrolled in CHIP in May 2023, a decrease of **41,687** individuals (0.6%) from April 2023.
- As of May 2023, enrollment in Medicaid and CHIP has decreased by **61,085** since March 2023, the final month of the Medicaid continuous enrollment condition under the Families First Coronavirus Response Act (FFCRA) and amended by the Consolidated Appropriations Act, 2023.<sup>2</sup>
  - Medicaid enrollment has increased by **69,102** individuals (0.1%).
  - CHIP enrollment has decreased by **130,187** individuals (1.8%).
- Between February 2020 and March 2023, enrollment in Medicaid and CHIP increased by **23,001,765** individuals (32.5%) to **93,876,834**.
  - Medicaid enrollment increased by **22,634,781** individuals (35.3%).
  - CHIP enrollment increased by **366,984** individuals (5.4%).

**Source:** Medicaid and CHIP Eligibility and Enrollment Performance Indicator Data as of July 12, 2023.

<sup>1</sup> Performance Indicator Enrollment Data counts individuals receiving full-scope and comprehensive Medicaid and CHIP benefits.

<sup>2</sup> Families First Coronavirus Response Act, Pub. L. No. 116-127, Sec 6008, Temporary Increase of Medicaid FMAP. Note that Sec. 6008 of the FFCRA is amended by the Consolidated Appropriations Act, Pub. L. No. 117-328.

# Key Findings (continued)

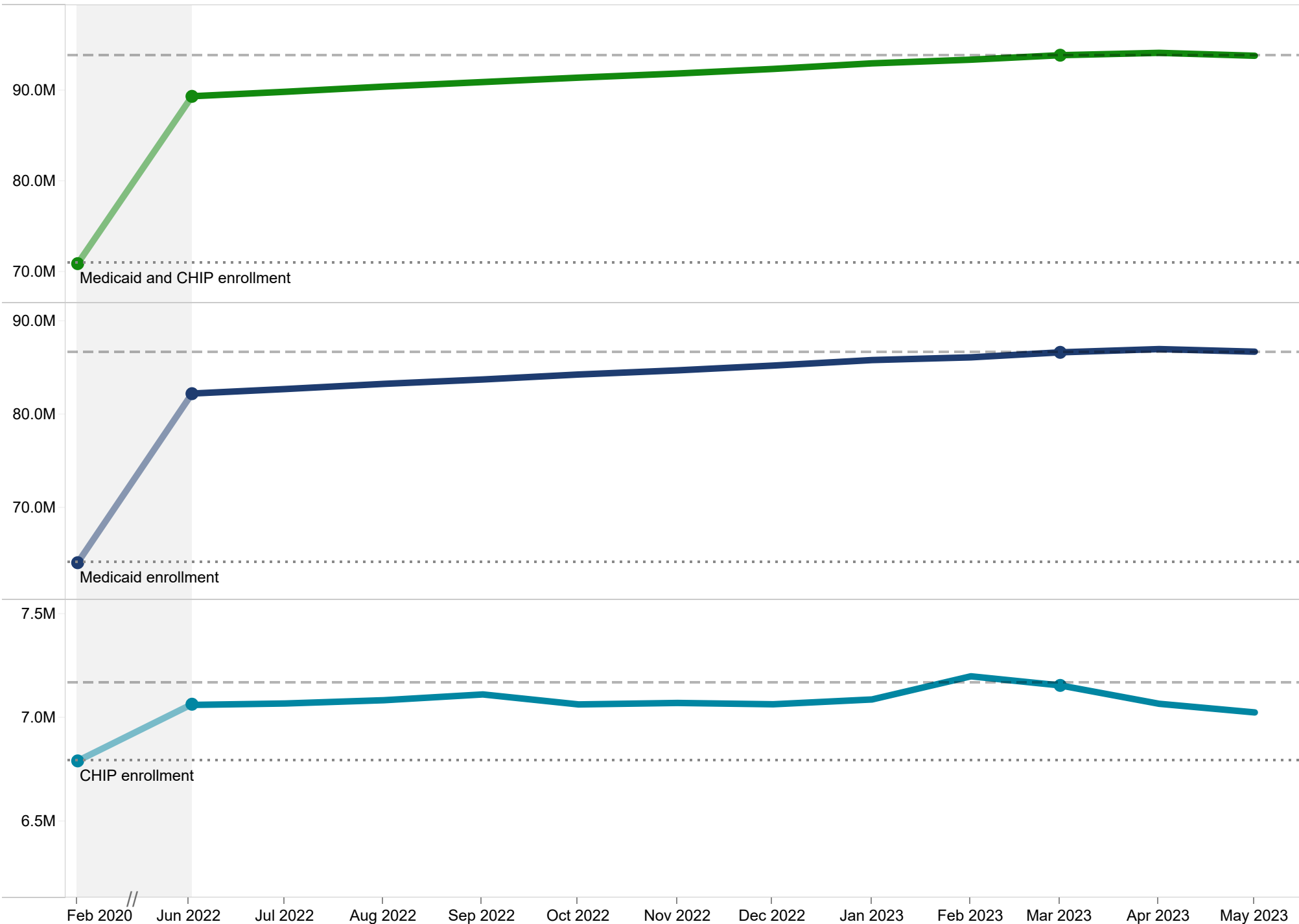
- In May 2023, **2,479,225** applications for Medicaid and CHIP were submitted directly to states.<sup>1</sup>
  - The number of applications submitted directly to states was 6.5 percent higher in May 2023 compared to April 2023.
- In May 2023, **521,954** applications were transferred from the Federally Facilitated Marketplace (FFM) to states.<sup>2</sup>
  - The number of transferred applications was 241.9 percent higher in May 2023 compared to April 2023.

**Source:** Medicaid and CHIP Eligibility and Enrollment Performance Indicator Data as of July 12, 2023.

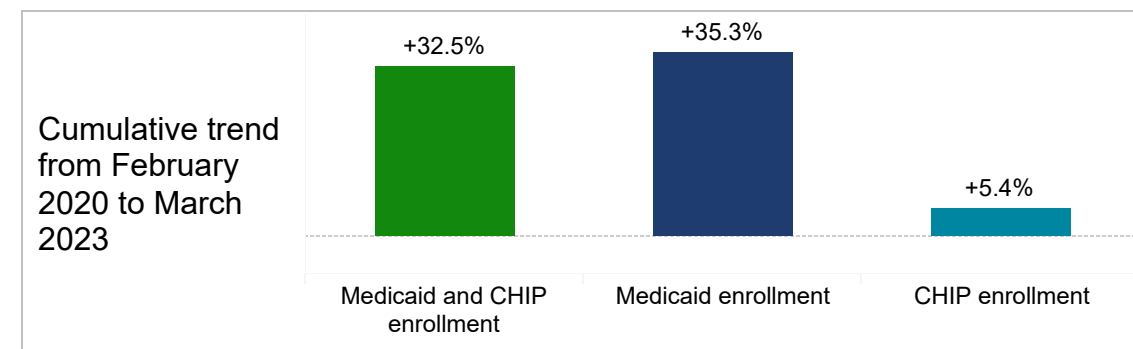
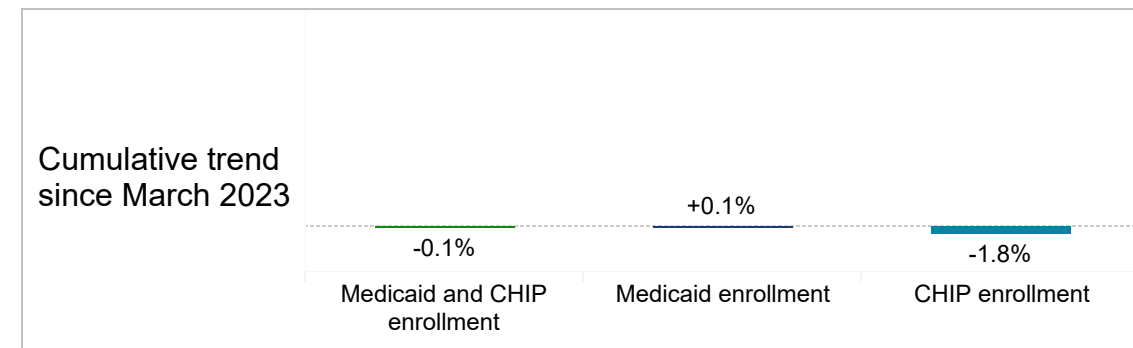
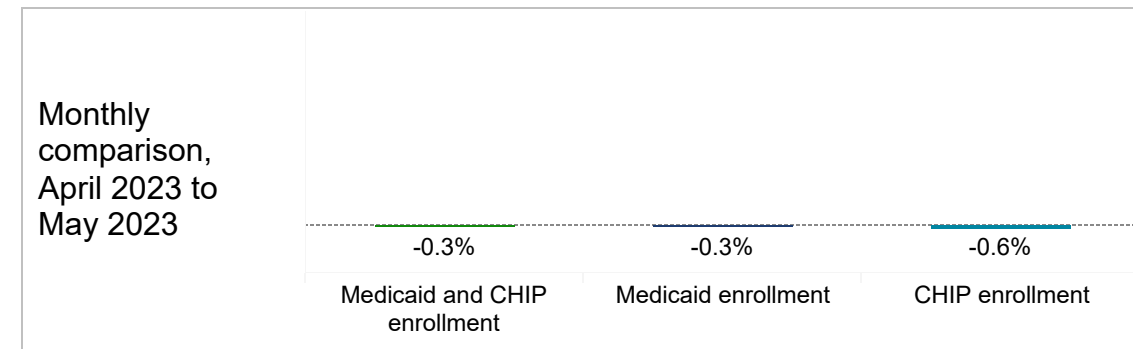
<sup>1</sup> These counts include applications received by 50 states and the District of Columbia. Kansas began reporting applications data in May 2023 and accounts for 0.6 percent of the national increase in applications. For additional information, please see Figure 4.

<sup>2</sup> These counts include account transfer data from 33 states that use the federal healthcare.gov platform. Kansas began reporting account transfer data in May 2023 and accounts for 1.1 percent of the national increase in transferred applications. For additional information, please see Figure 6.

**Figure 1. National Medicaid and CHIP enrollment, February 2020 to May 2023, CMS Performance Indicator Data**



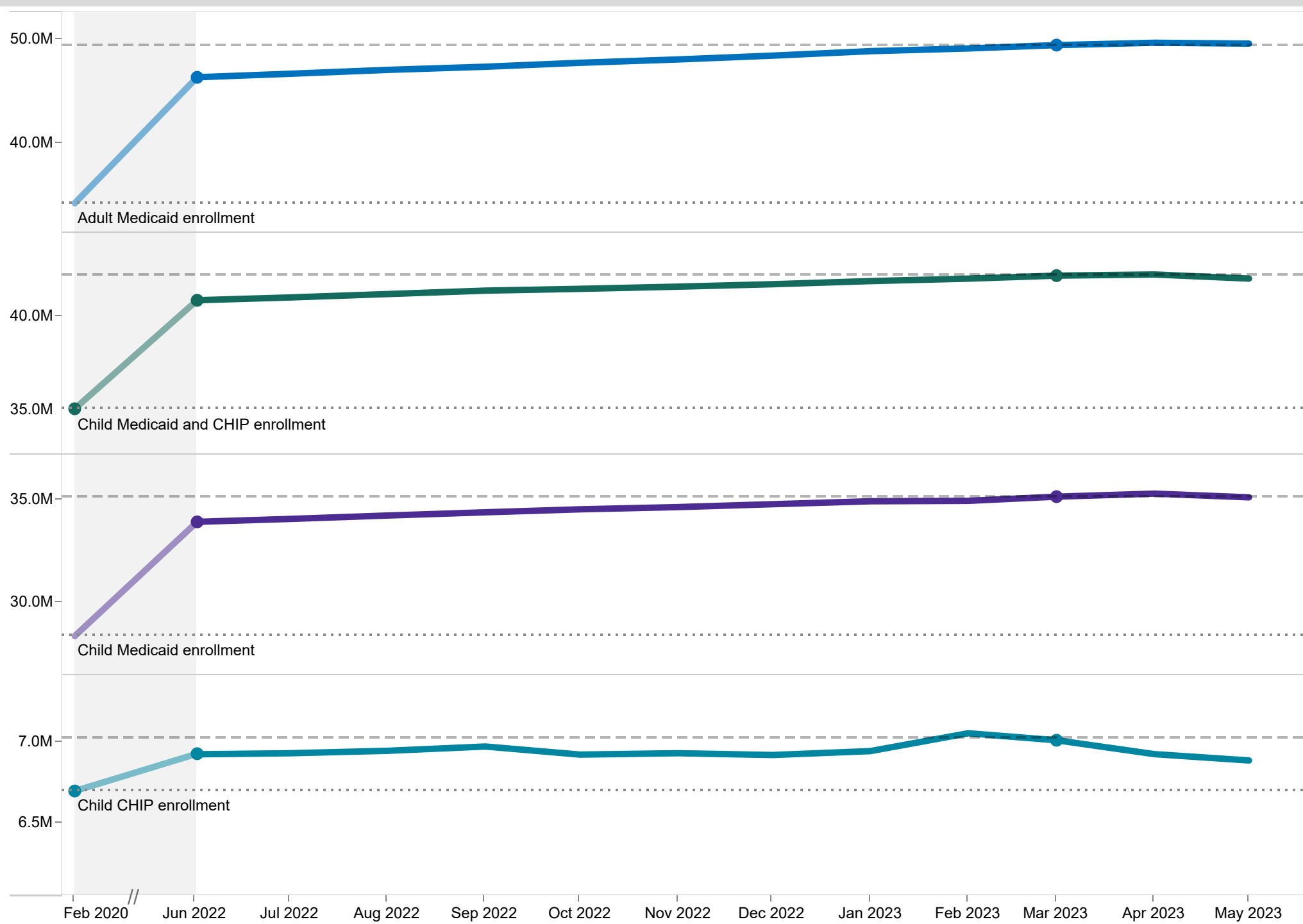
	Medicaid and CHIP enrollment	Medicaid enrollment	CHIP enrollment
May 2023	93,815,749	86,783,676	7,032,073
April 2023	94,136,809	87,063,049	7,073,760
March 2023	93,876,834	86,714,574	7,162,260
February 2020	70,875,069	64,079,793	6,795,276



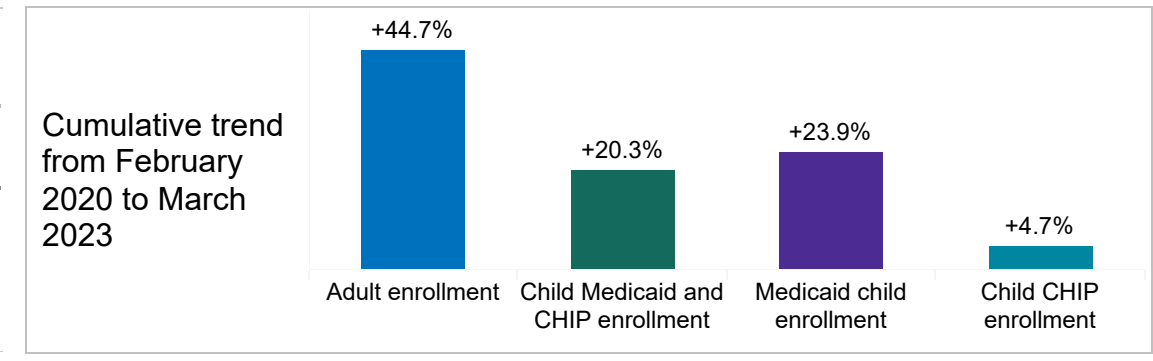
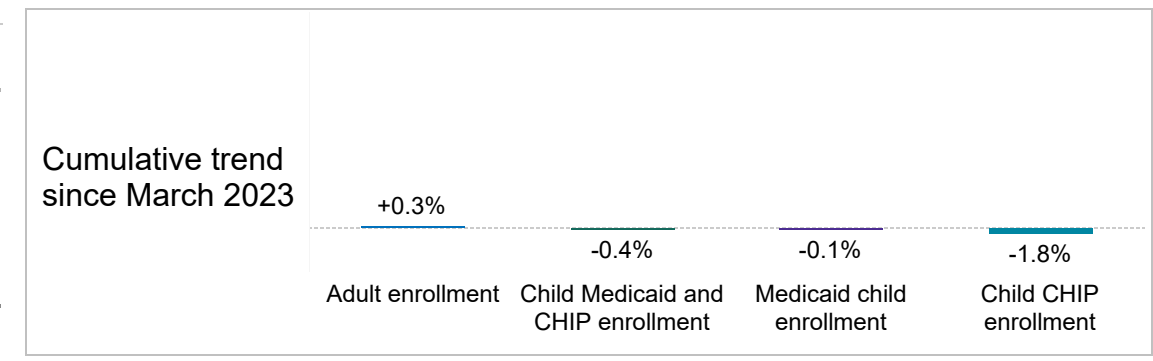
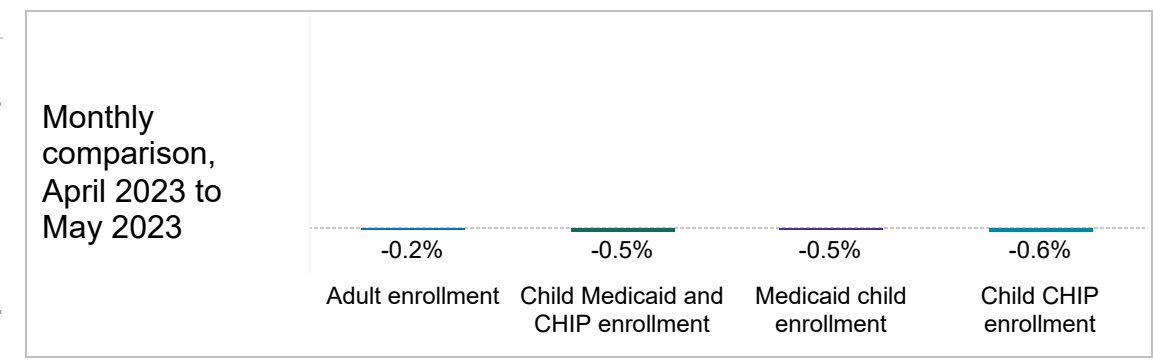
**Source:** Medicaid and CHIP Eligibility and Enrollment Performance Indicator Data as of July 12, 2023.

**Note:** This analysis includes preliminary enrollment data from 50 states and the District of Columbia. February 2020 serves as the baseline of enrollment prior to the impacts of the COVID-19 pandemic and the Families First Coronavirus Response Act (FFCRA) Medicaid continuous enrollment condition. The grey area on the line graphs represents the overall trend between February 2020 and June 2022, and is included to provide additional context to the annual trend from June 2022 to May 2023. March 2023 serves as the baseline of enrollment prior to the end of FFCRA's Medicaid continuous enrollment condition, after which states may initiate the disenrollment of individuals who have not had their Medicaid eligibility successfully renewed in the past 12 months. For additional information on Medicaid and CHIP enrollment from December 2019 to May 2023, please see Appendix A.

**Figure 2. National adult and child enrollment in Medicaid and CHIP, February 2020 to May 2023, CMS Performance Indicator Data**



	Adult enrollment	Child Medicaid and CHIP enrollment	Medicaid child enrollment	Child CHIP enrollment
May 2023	49,551,194	41,980,967	35,091,163	6,889,804
April 2023	49,633,376	42,199,813	35,270,744	6,929,069
March 2023	49,405,893	42,138,830	35,123,783	7,015,047
February 2020	34,132,212	35,037,068	28,339,309	6,697,759

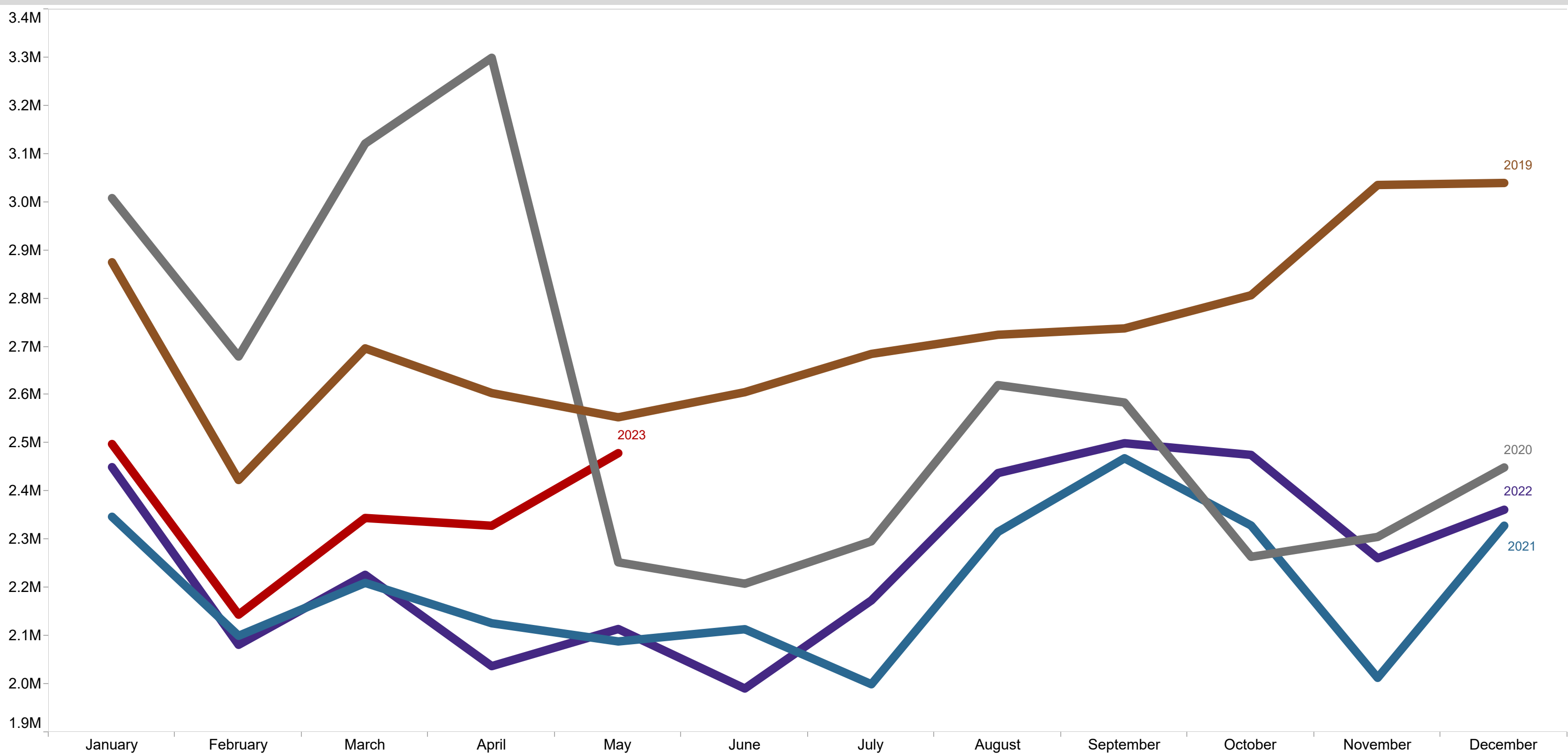


**Source:** Medicaid and CHIP Eligibility and Enrollment Performance Indicator Data as of July 12, 2023.  
**Note:** This analysis includes preliminary enrollment data from 49 states and the District of Columbia. Arizona is excluded because the state did not report the breakouts for adult and child enrollment between February 2020 and May 2023. February 2020 serves as the baseline of enrollment prior to the impacts of the COVID-19 pandemic and the Families First Coronavirus Response Act (FFCRA) Medicaid continuous enrollment condition. The grey area on the line graphs represents the overall trend between February 2020 and June 2022, and is included to provide additional context to the annual trend from June 2022 to May 2023. March 2023 serves as the baseline of enrollment prior to the end of FFCRA’s Medicaid continuous enrollment condition, after which states may initiate the disenrollment of individuals who have not had their Medicaid eligibility successfully renewed in the past 12 months. For additional information on Medicaid and CHIP enrollment from December 2019 to May 2023, please see Appendix B.





**Figure 4. National Medicaid and CHIP applications submitted directly to states from 2019 to 2023, CMS Performance Indicator Data**

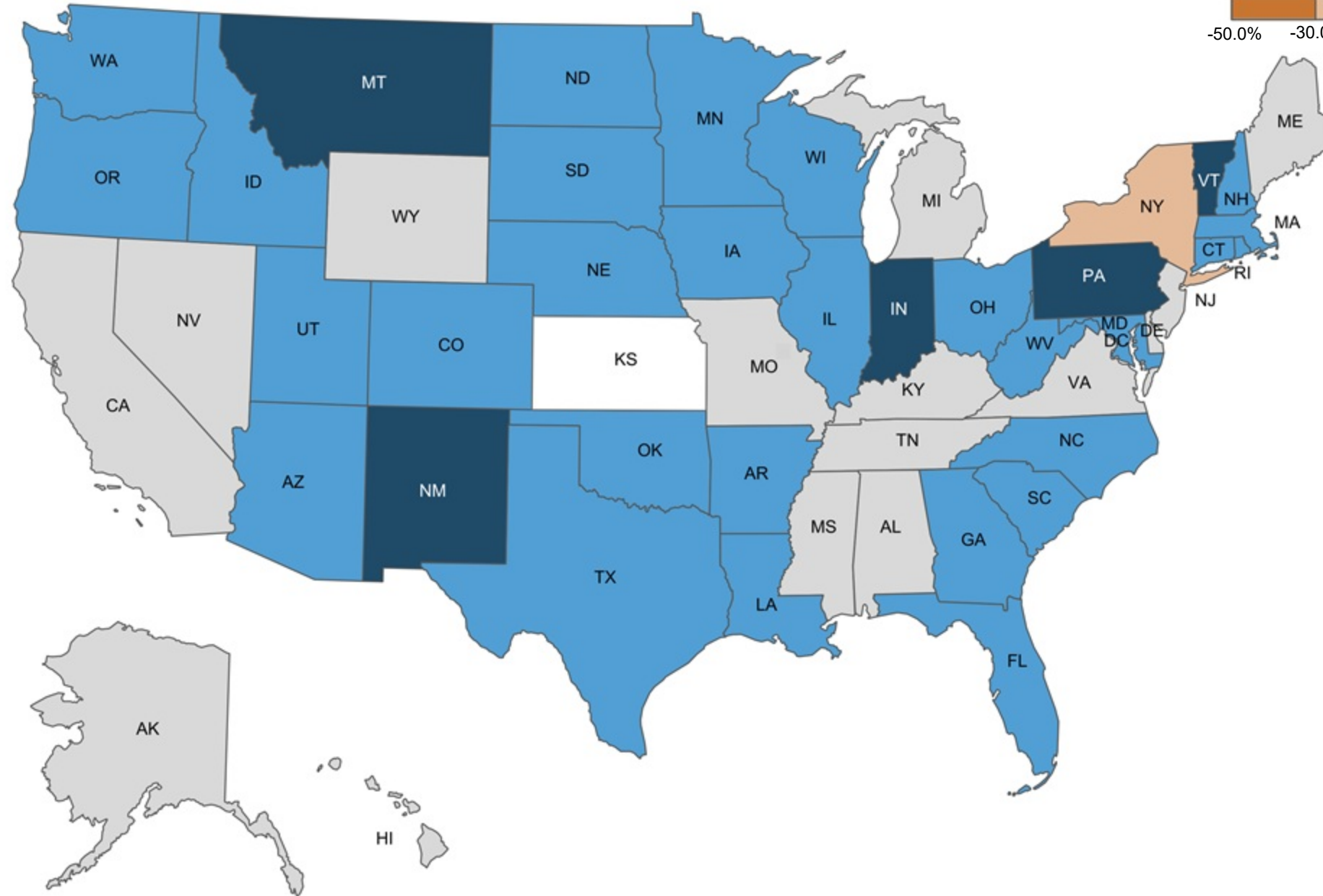


**Source:** Medicaid and CHIP Eligibility and Enrollment Performance Indicator Data as of July 12, 2023.  
**Note:** Applications submitted directly to states include applications received by any state agency to make Medicaid or CHIP eligibility determinations, including the Medicaid agency, a separate CHIP agency, or a state-based marketplace. Applications transferred from the FFM are not included. This analysis includes preliminary data from 50 states and the District of Columbia. Fluctuations in state-reported Medicaid and CHIP applications may be observed throughout a given year as a result of open enrollment activities or other seasonal changes.  
**Data context:** Tennessee did not report applications in January and February 2019. Maine did not report applications in June 2020. Kansas did not report applications from January 2019 to April 2023.

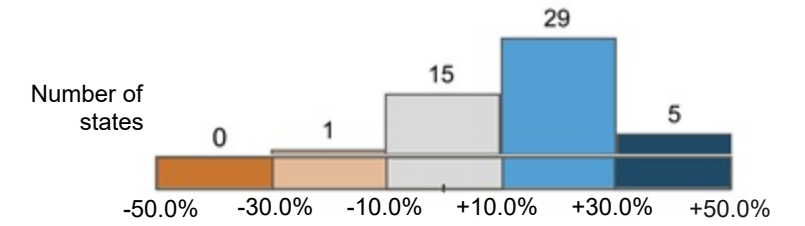


**Figure 5. Change in Medicaid and CHIP applications submitted directly to states, April 2023 to May 2023, CMS Performance Indicator Data**

Nationally, the number of Medicaid and CHIP applications submitted directly to states was about 6.5 percent higher in May 2023 compared to April 2023. In most states (29), applications increased by 10 percent to 30 percent. Applications changed by less than 10 percent in 14 states and the District of Columbia. In 5 states, applications increased by more than 30 percent.<sup>(1)</sup> By contrast, New York experienced an 11 percent decrease in applications submitted.<sup>(2)</sup>



**Percentage change in Medicaid and CHIP applications**



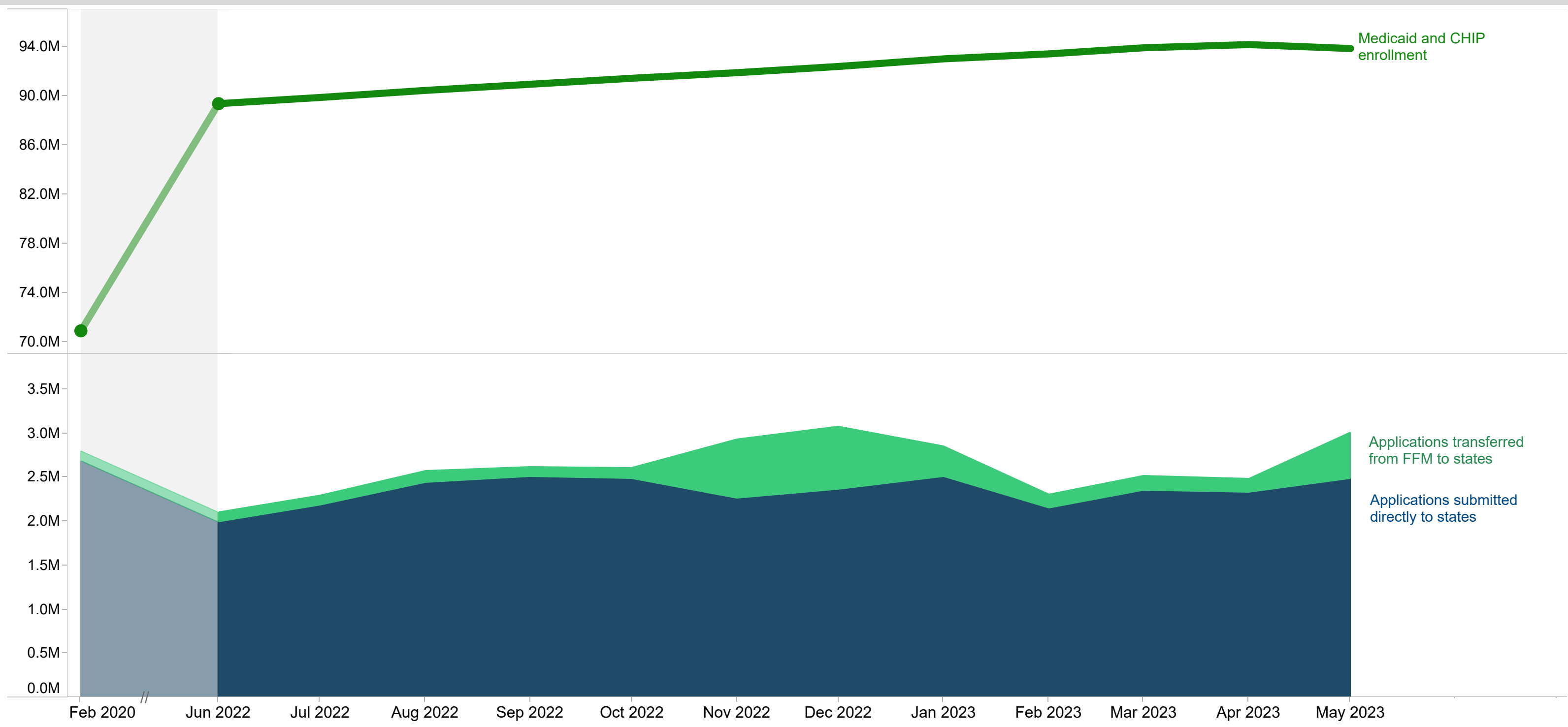
© 2021 Mapbox © OpenStreetMap

**Source:** Medicaid and CHIP Eligibility and Enrollment Performance Indicator Data as of July 12, 2023.

**Note:** Applications submitted directly to states include applications received by any state agency to make Medicaid or CHIP eligibility determinations, including the Medicaid agency, a separate CHIP agency, or a state-based marketplace. Applications transferred from the FFM are not included. This analysis includes preliminary data from 49 states and the District of Columbia. Kansas did not report applications data for April 2023, and is so excluded.

**Data Context:** (1) In Indiana, applications increased by 34.8 percent (8,212 applications). In Montana, applications increased by 38.7 percent (762 applications). In New Mexico, applications increased by 48.7 percent (4,465 applications). In Pennsylvania, applications increased by 41.4 percent (21,604 applications). In Vermont, applications increased by 38.1 percent (945 applications). (2) In New York, applications decreased by 10.5 percent (102,138 applications).

**Figure 6. Comparison of Medicaid and CHIP enrollment with the number of applications received, February 2020 to May 2023, CMS Performance Indicator Data**



**Source:** Medicaid and CHIP Eligibility and Enrollment Performance Indicator Data as of July 12, 2023.  
**Note:** Applications submitted directly to states include applications received by any state agency to make Medicaid or CHIP eligibility determinations, including the Medicaid agency, a separate CHIP agency, or a state-based marketplace. Applications transferred from the FFM to states include the total number of accounts electronically transferred from the FFM to states for Medicaid or CHIP. This analysis includes preliminary enrollment and applications data from 50 states and the District of Columbia, and account transfer data from 33 states that use the federal healthcare.gov platform. The grey area on the graphs represents the overall trend between February 2020 and June 2022, and is included to provide additional context to the annual trend from June 2022 to May 2023.  
**Data context:** Maine did not report applications in June 2020. Kansas did not report applications from February 2020 to April 2023.

# Appendices

**Appendix A. National Medicaid and CHIP enrollment, December 2019 to May 2023**

Date	Medicaid and CHIP enrollment	Medicaid enrollment	CHIP enrollment	Date	Medicaid and CHIP enrollment	Medicaid enrollment	CHIP enrollment
December 2019	70,831,958	64,126,472	6,705,486	January 2023	92,978,057	85,883,500	7,094,557
January 2020	70,970,464	64,254,880	6,715,584	February 2023	93,382,170	86,176,036	7,206,134
February 2020	70,875,069	64,079,793	6,795,276	March 2023	93,876,834	86,714,574	7,162,260
March 2020	71,180,486	64,335,254	6,845,232	April 2023	94,136,809	87,063,049	7,073,760
April 2020	72,603,073	65,715,458	6,887,615	May 2023	93,815,749	86,783,676	7,032,073
May 2020	73,692,617	66,836,391	6,856,226				
June 2020	74,821,865	67,990,487	6,831,378				
July 2020	75,716,684	68,871,171	6,845,513				
August 2020	76,649,189	69,794,984	6,854,205				
September 2020	77,470,692	70,613,157	6,857,535				
October 2020	78,251,746	71,365,841	6,885,905				
November 2020	79,018,355	72,096,775	6,921,580				
December 2020	79,854,706	72,921,948	6,932,758				
January 2021	80,587,745	73,653,859	6,933,886				
February 2021	81,077,118	74,132,757	6,944,361				
March 2021	81,725,954	74,745,277	6,980,677				
April 2021	82,297,819	75,303,542	6,994,277				
May 2021	82,737,799	75,721,370	7,016,429				
June 2021	83,247,491	76,208,165	7,039,326				
July 2021	83,770,429	76,724,825	7,045,604				
August 2021	84,393,610	77,316,995	7,076,615				
September 2021	84,918,769	77,824,151	7,094,618				
October 2021	85,433,210	78,357,124	7,076,086				
November 2021	85,903,624	78,853,610	7,050,014				
December 2021	86,459,003	79,406,102	7,052,901				
January 2022	87,001,050	79,935,132	7,065,918				
February 2022	87,420,554	80,354,031	7,066,523				
March 2022	87,925,846	80,877,212	7,048,634				
April 2022	88,353,579	81,322,054	7,031,525				
May 2022	88,863,634	81,852,908	7,010,726				
June 2022	89,335,682	82,267,610	7,068,072				
July 2022	89,839,664	82,764,521	7,075,143				
August 2022	90,413,769	83,322,802	7,090,967				
September 2022	90,913,433	83,794,654	7,118,779				
October 2022	91,400,736	84,330,074	7,070,662				
November 2022	91,854,934	84,777,237	7,077,697				
December 2022	92,360,467	85,289,087	7,071,380				

**Source:** Medicaid and CHIP Eligibility and Enrollment Performance Indicator Data as of July 12, 2023.

**Note:** This table summarizes Medicaid and CHIP enrollment since December 2019. This table is provided as a supplement to Figure 1, and includes preliminary enrollment data from 50 states and the District of Columbia.

**Appendix B. National adult and child enrollment in Medicaid and CHIP, December 2019 to May 2023**

Date	Adult Medicaid enrollment	Child Medicaid and CHIP enrollment	Child Medicaid enrollment	Child CHIP enrollment	Date	Adult Medicaid enrollment	Child Medicaid and CHIP enrollment	Child Medicaid enrollment	Child CHIP enrollment
December 2019	34,060,282	35,063,603	28,455,567	6,608,036	January 2023	48,821,242	41,847,239	34,899,432	6,947,807
January 2020	34,201,518	35,066,314	28,447,445	6,618,869	February 2023	49,084,085	41,978,393	34,919,893	7,058,500
February 2020	34,132,212	35,037,068	28,339,309	6,697,759	March 2023	49,405,893	42,138,830	35,123,783	7,015,047
March 2020	34,328,184	35,105,558	28,361,219	6,744,339	April 2023	49,633,376	42,199,813	35,270,744	6,929,069
April 2020	35,214,430	35,607,410	28,820,916	6,786,494	May 2023	49,551,194	41,980,967	35,091,163	6,889,804
May 2020	35,850,187	36,025,068	29,271,734	6,753,334					
June 2020	36,551,670	36,430,263	29,703,676	6,726,587					
July 2020	37,089,106	36,765,170	30,027,447	6,737,723					
August 2020	37,674,174	37,087,633	30,342,818	6,744,815					
September 2020	38,200,133	37,367,131	30,621,404	6,745,727					
October 2020	38,697,170	37,629,890	30,858,500	6,771,390					
November 2020	39,213,415	37,862,138	31,057,879	6,804,259					
December 2020	39,799,763	38,091,936	31,278,733	6,813,203					
January 2021	40,309,930	38,296,006	31,483,543	6,812,463					
February 2021	40,618,590	38,460,187	31,639,030	6,821,157					
March 2021	41,045,039	38,669,645	31,813,861	6,855,784					
April 2021	41,425,878	38,844,876	31,977,334	6,867,542					
May 2021	41,714,861	38,978,334	32,090,017	6,888,317					
June 2021	42,052,806	39,135,129	32,225,914	6,909,215					
July 2021	42,430,127	39,268,200	32,354,312	6,913,888					
August 2021	42,825,679	39,479,786	32,536,406	6,943,380					
September 2021	43,187,859	39,629,312	32,668,519	6,960,793					
October 2021	43,545,525	39,774,114	32,832,305	6,941,809					
November 2021	43,908,348	39,867,089	32,952,531	6,914,558					
December 2021	44,323,348	39,995,973	33,079,536	6,916,437					
January 2022	44,709,018	40,136,300	33,208,015	6,928,285					
February 2022	44,980,310	40,271,016	33,342,258	6,928,758					
March 2022	45,302,093	40,444,772	33,534,602	6,910,170					
April 2022	45,630,632	40,530,291	33,638,375	6,891,916					
May 2022	45,975,268	40,681,574	33,810,776	6,870,798					
June 2022	46,295,581	40,823,730	33,895,759	6,927,971					
July 2022	46,637,555	40,974,138	34,039,600	6,934,538					
August 2022	47,012,901	41,155,761	34,206,104	6,949,657					
September 2022	47,316,819	41,338,806	34,362,566	6,976,240					
October 2022	47,698,483	41,434,246	34,508,073	6,926,173					
November 2022	48,021,012	41,550,789	34,616,124	6,934,665					
December 2022	48,388,936	41,680,335	34,756,669	6,923,666					

**Source:** Medicaid and CHIP Eligibility and Enrollment Performance Indicator Data as of July 12, 2023.

**Note:** This table summarizes adult and child enrollment in Medicaid and CHIP since December 2019. This table is provided as a supplement to Figure 2, and includes preliminary enrollment data from 49 states and the District of Columbia. Arizona is excluded from both Figure 2 and Appendix B because the state did not report the breakouts for adult and child enrollment between December 2019 and May 2023.

# Background

- This is a Center for Medicaid & CHIP Services (CMCS) Medicaid and CHIP Coverage Learning Collaborative (MAC LC) project that monitors Medicaid and Children's Health Insurance Program (CHIP) enrollment trends, primarily using the Centers for Medicare and Medicaid Services (CMS) Performance Indicator Data.
- The MAC LC is a CMCS project that provides a forum for facilitated discussion and learning across CMS and states, with the goal of implementing and improving the programs, tools, and systems needed to ensure high-performing state health insurance programs. The MAC LC has enabled CMS to more effectively identify issues and also monitor and improve program performance.
- This snapshot is a companion to the May 2023 Medicaid & CHIP Application, Eligibility, and Enrollment Data posted on [Medicaid.gov](https://www.Medicaid.gov).
- The Enrollment Trends project primarily relies on Performance Indicator Data. All states—including the District of Columbia—provide data each month about their Medicaid and CHIP eligibility and enrollment activity. These data reflect a range of indicators related to key application, eligibility, and enrollment processes within the state Medicaid and CHIP agency. The complete data set is available on [Data.Medicaid.gov](https://Data.Medicaid.gov).