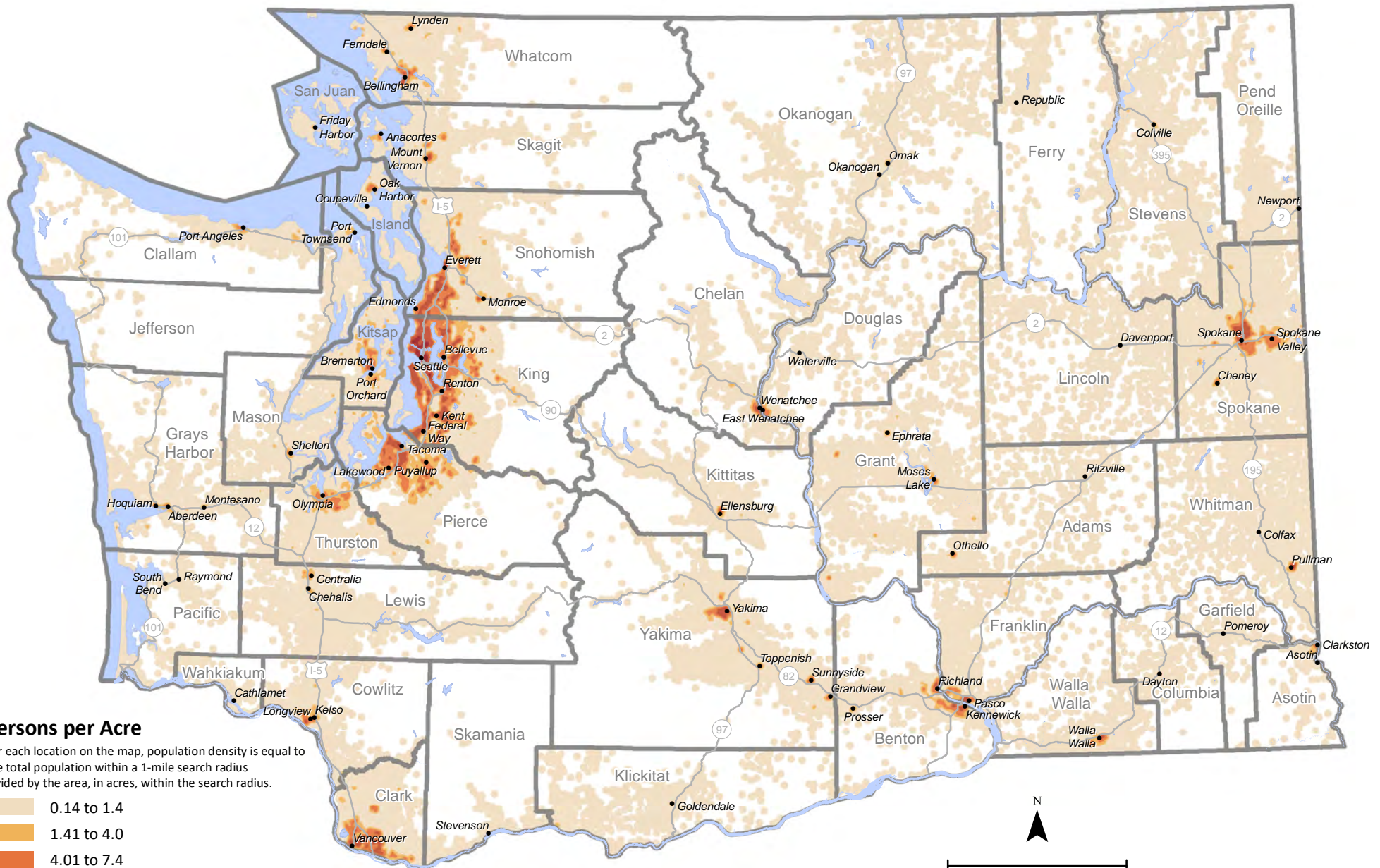


# 2010 Washington State Population Density



## Persons per Acre

For each location on the map, population density is equal to the total population within a 1-mile search radius divided by the area, in acres, within the search radius.

- 0.14 to 1.4
- 1.41 to 4.0
- 4.01 to 7.4
- 7.41 to 14.2
- 14.21 to 36.3

White areas are unpopulated

